

ALUSHIP[®]

TECHNOLOGY

Engineering Manufacturing
Aluminium Stainless Steel
Coordination Outfitting
Maritime Offshore Onshore
Newbuilding Conversion



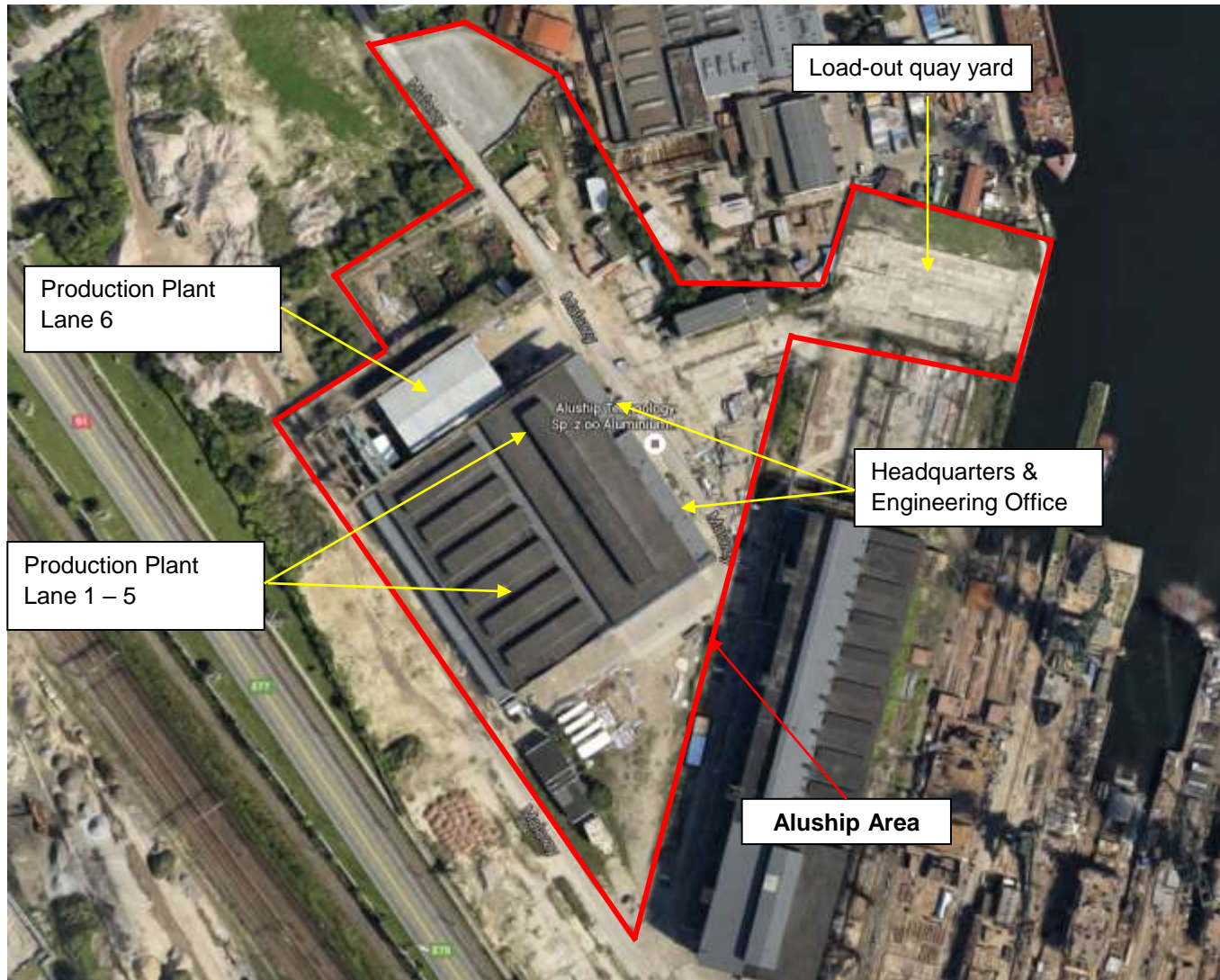
ALUSHIP[®]

TECHNOLOGY

Engineering Manufacturing
Aluminium Stainless Steel
Coordination Outfitting
Maritime Offshore Onshore
Newbuilding Conversion



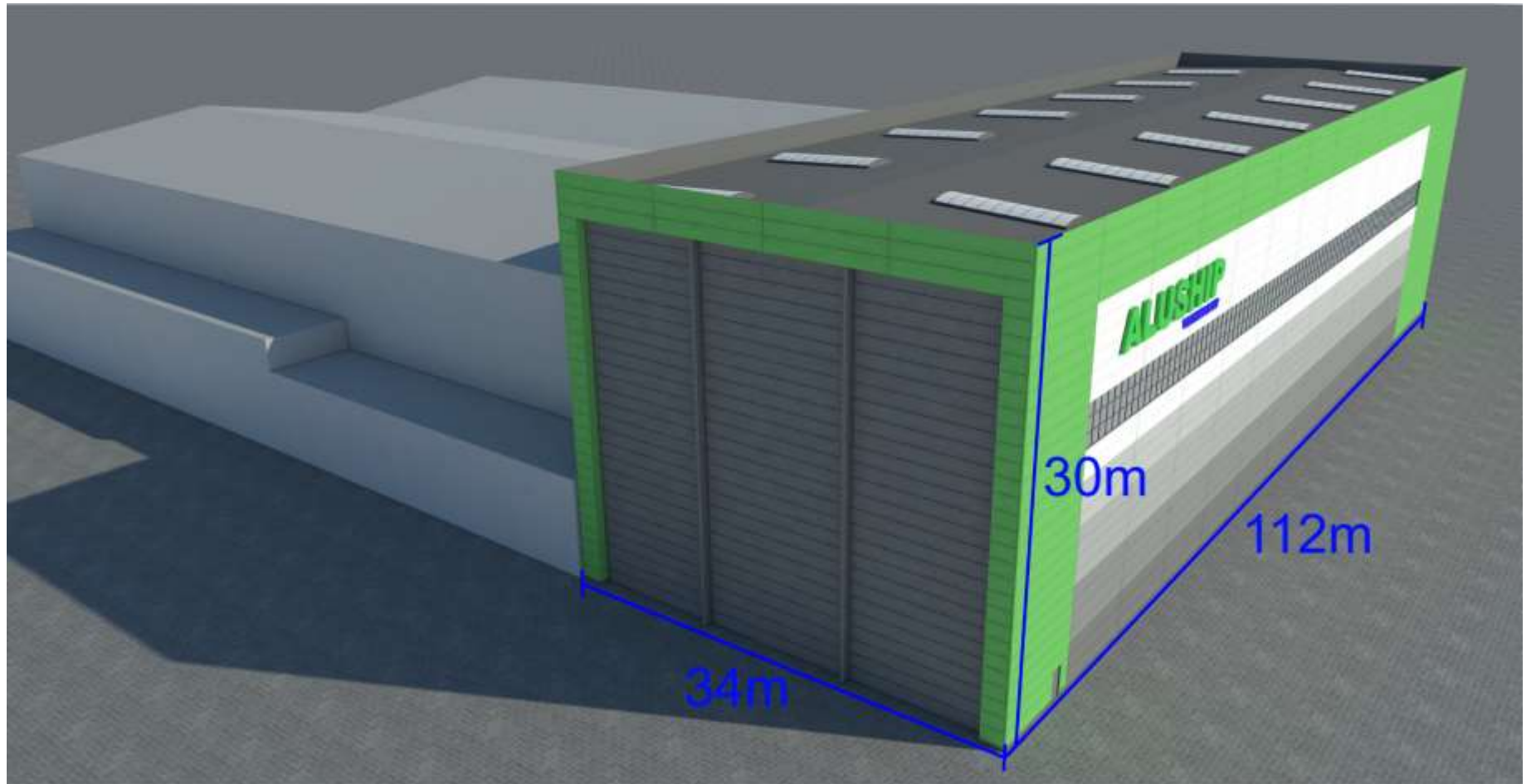
Aluship Technology has its own 4.5ha area in Gdansk harbour



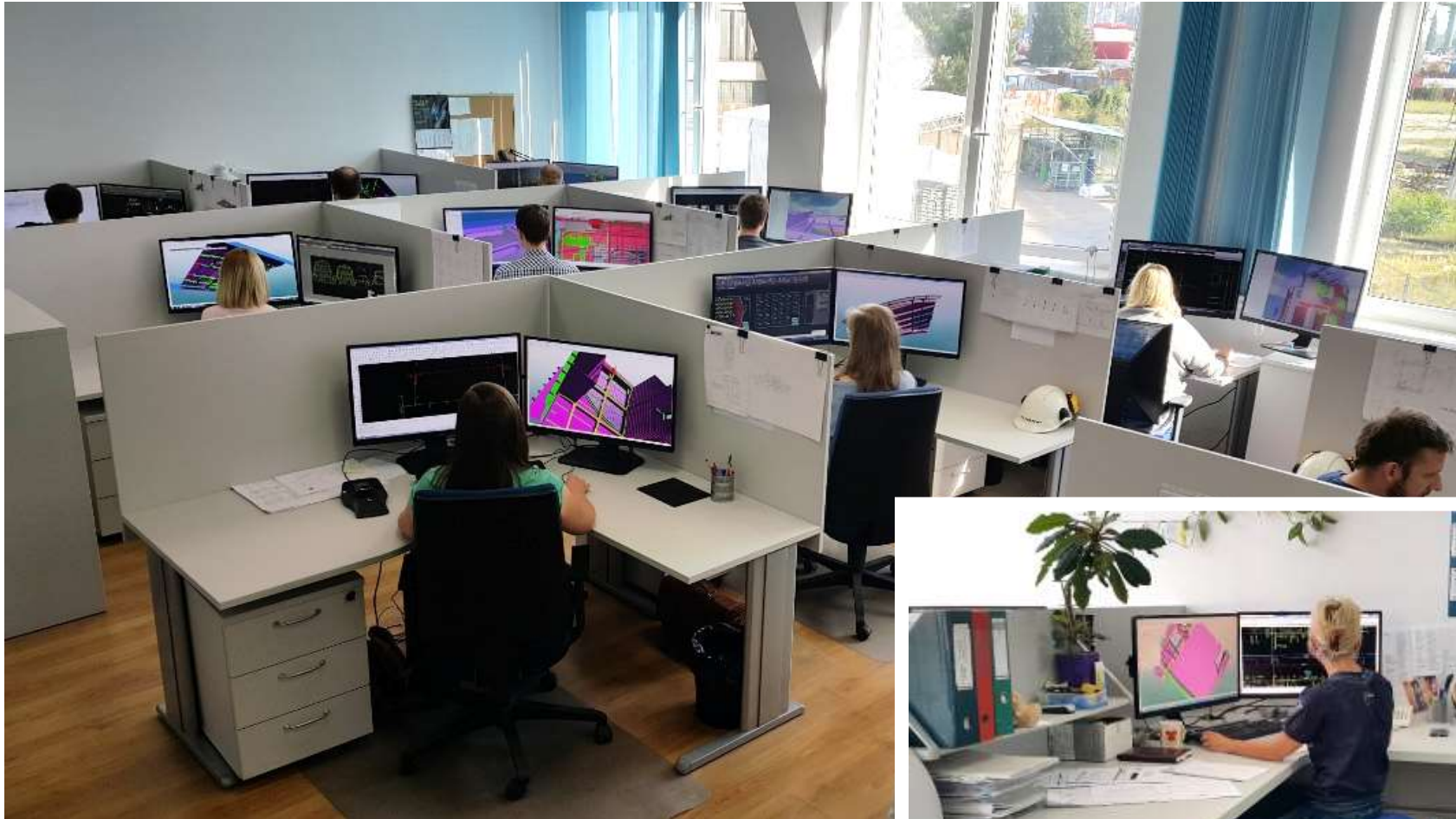
Production facilities in Gdansk harbour



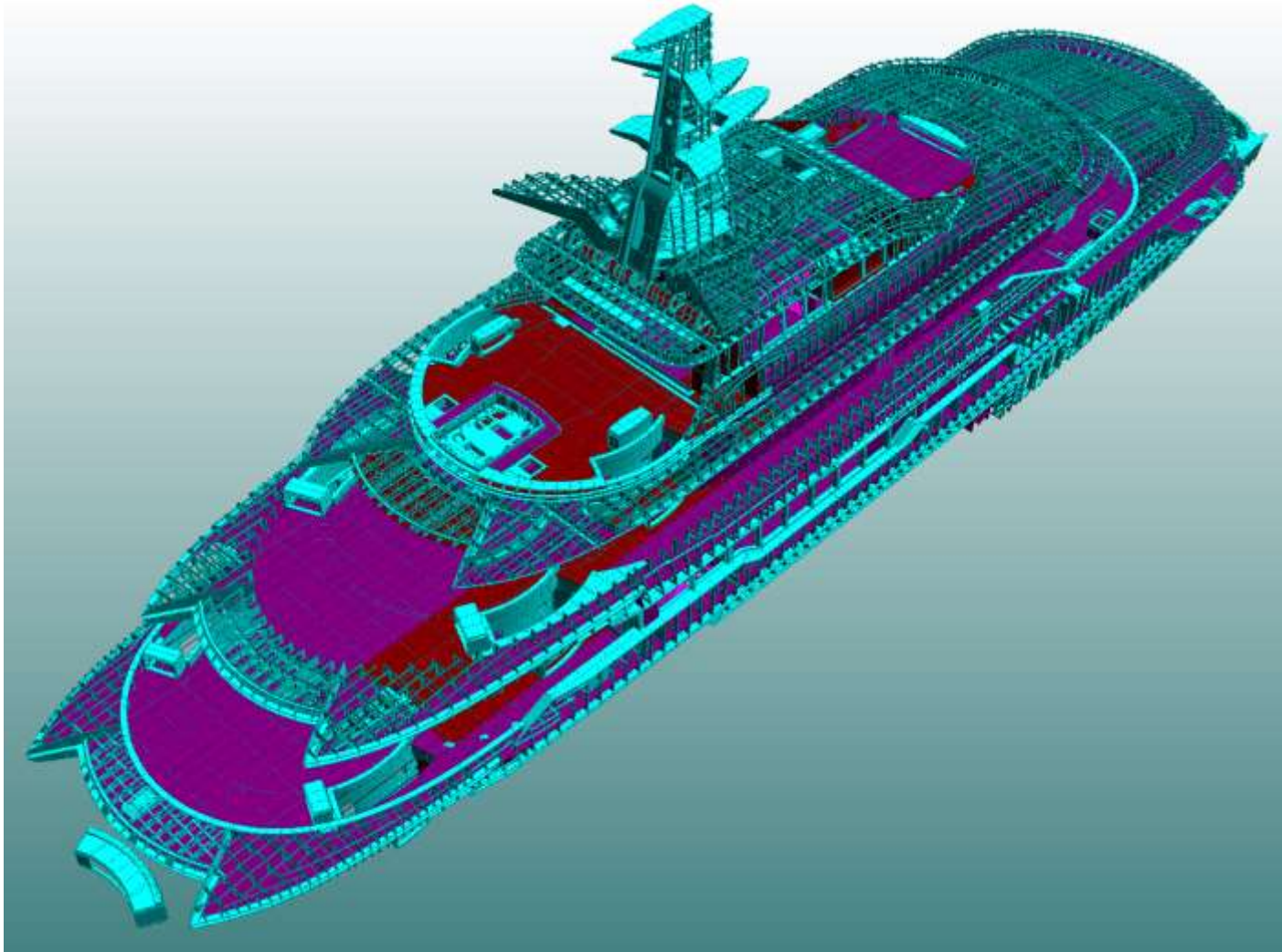
Investment plan for new hall of 3745m² floor space



Engineering office with 42 workstations

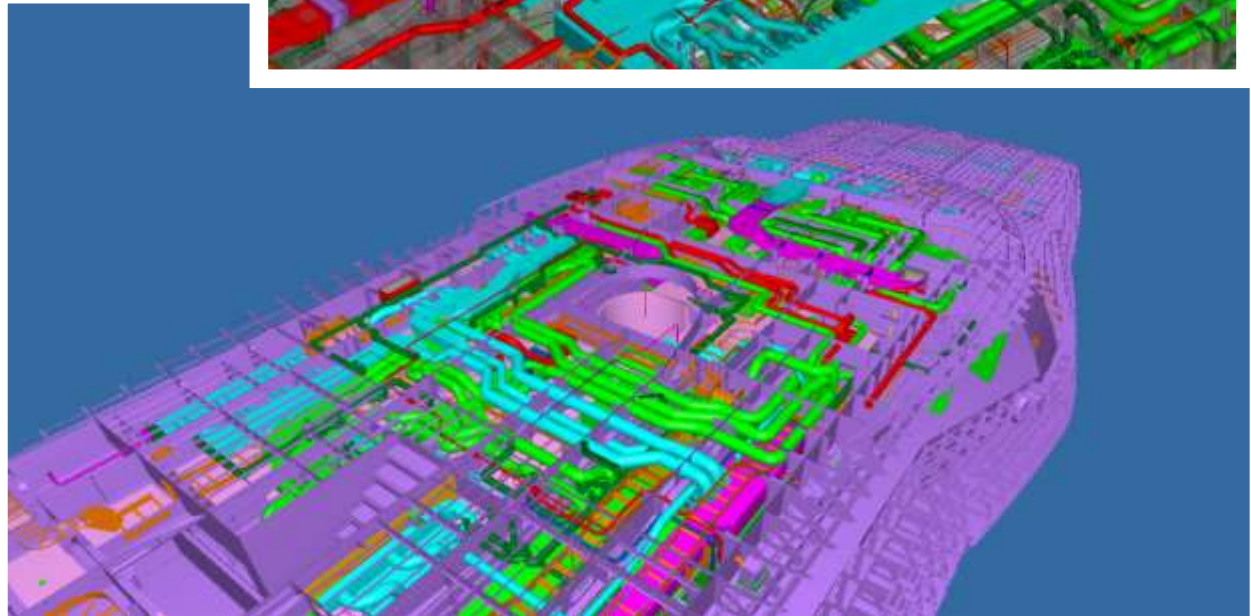
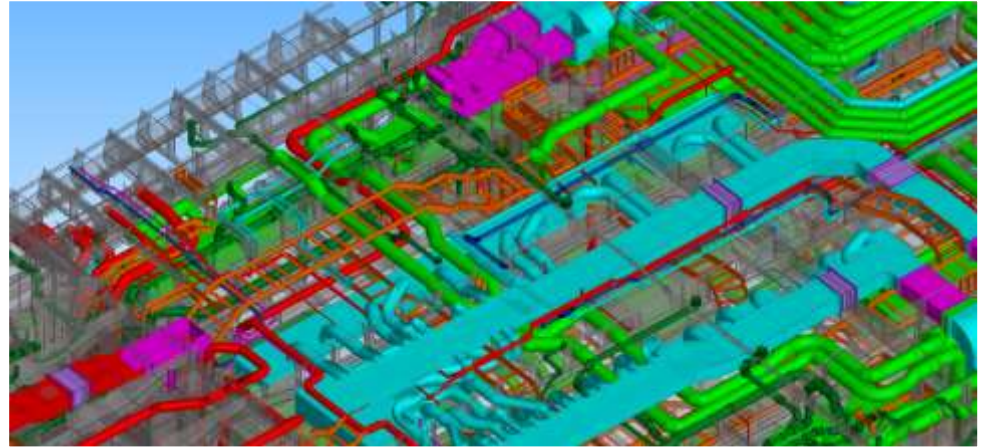
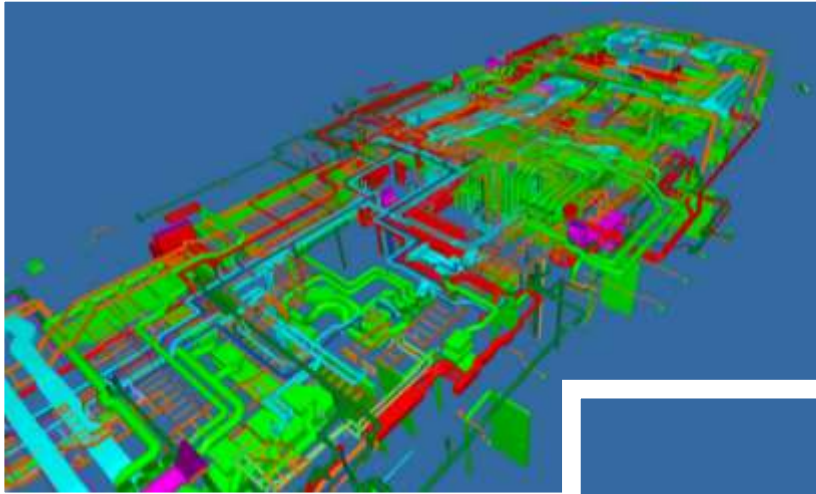


Structural design + engineering



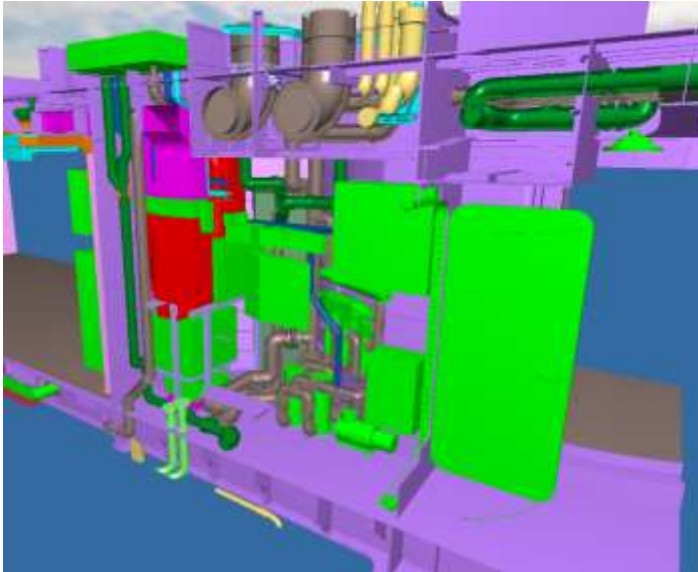
Coordination + outfitting engineering

Example coordination of superstructure piping systems

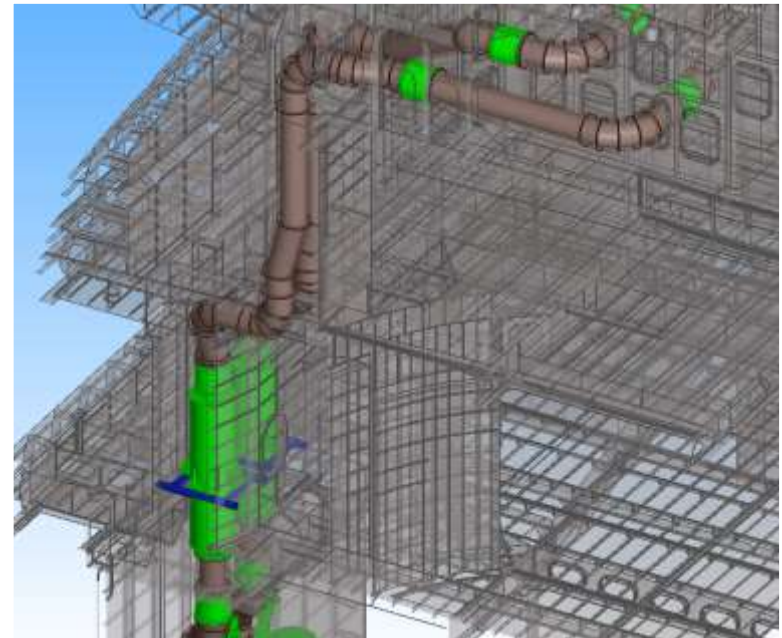


Coordination + outfitting engineering

Example arrangement of technical space



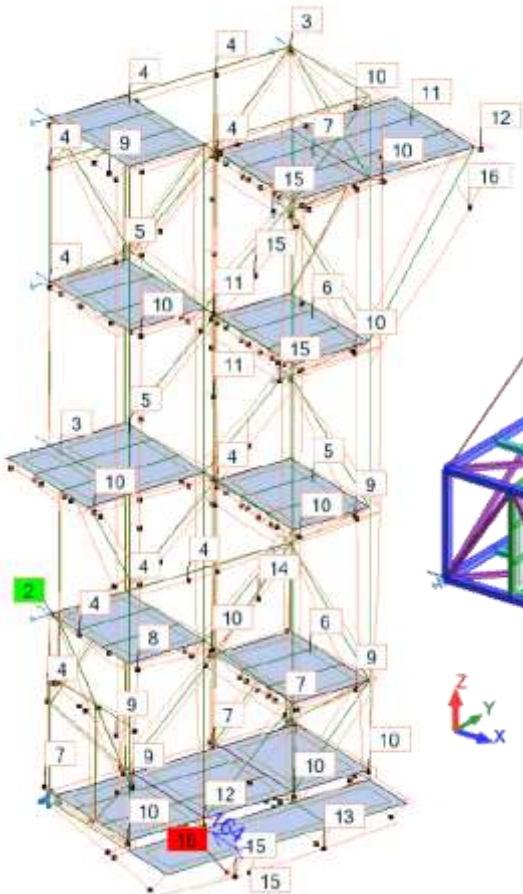
Example coordination of exhaust gas system with equipment parts



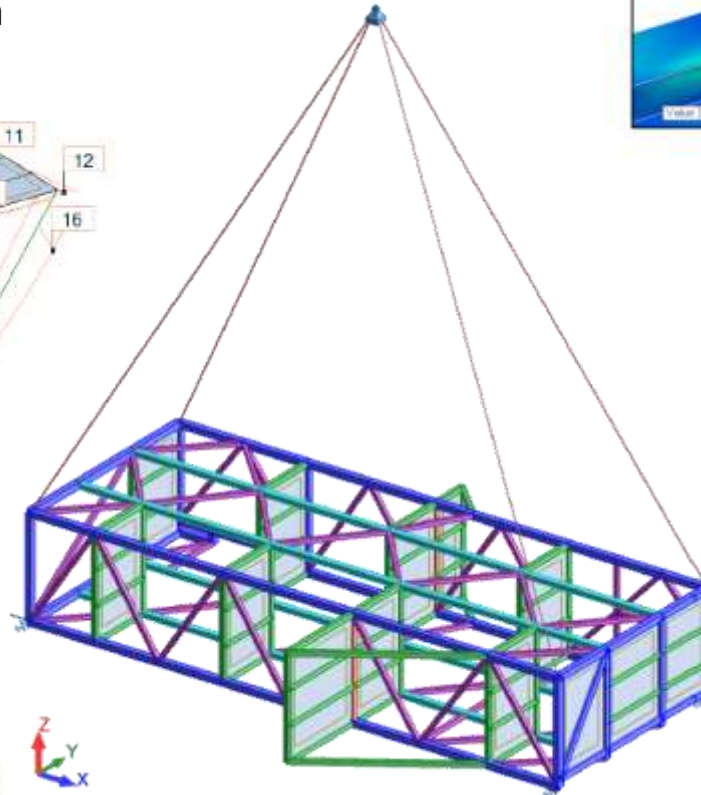
Example coordination of cable trays

Structural Calculation & FEM Analysis

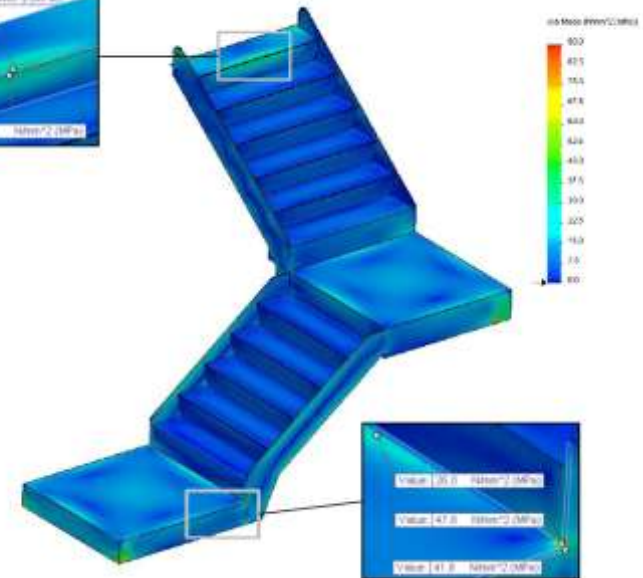
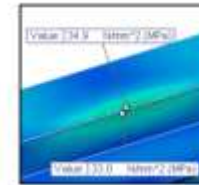
Bars deformation



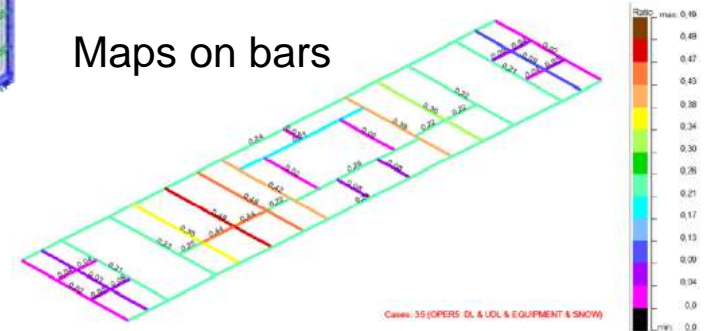
Lifting analysis



vMises Stress



Maps on bars



Production facilities



12 mtr one-side welding gantries
for aluminium and steel

From technical design to final commissioning



The superstructures for „Aida Vita“ and sister ship

Superstructures



The scope of activities included

- complete revision and improvement of existing technical AI-design projects,
- complete classification process,
- consulting our client for special equipment and devices for aluminium superstructures,
- developing specific trapezoid panel with extrusion tool,
- class - construction - workshop drawings,
- lofting, nesting, plasma cutting docs,
- plasma cutting and marking,
- complete mounting and welding of all sections,
- complete mounting of ready blocks on steel hull at our clients premises,
- complete drawings and construction of outfitting parts including windscreens, foundations for lifts and other equipment,



The superstructures for „Aida Vita“ and sister ship

Redesign of superstructure into aluminium

Aluship Technology delivered full service package consisting of:

- complete conversion of steel construction into specific aluminium panel design achieving up to 64% of weight reduction,
- FE-AI calculation,
- complete classification process with ABS / RINA and approval of drawings,
- consulting our client for special equipment and devices for aluminium superstructures,
- CAD/CAM, lofting, nesting, plasma cutting documents,
- plasma-cutting,
- complete mounting/welding of all sections,
- complete mounting/welding of pins for insulation, piping, cabling,
- complete mounting of ready sections on steel hull at our client's premises



Aluship design = 64% weight saving !

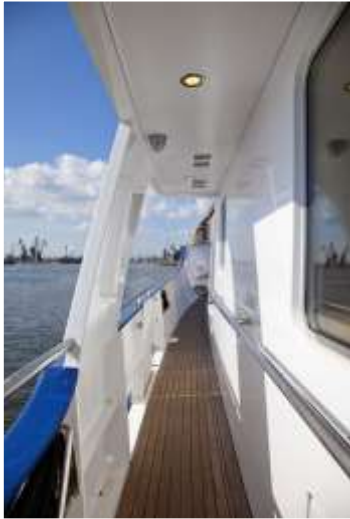
Aluship Explorer 79



Aluship Explorer 79



Aluship Explorer 79



Aluship Explorer 79



„Anastasia“ 85m steel hull with Al-superstructure



Navy Superstructures



Naval superstructures for TKMS Hellenic Shipyards

46m SAR aluminium hull



DGzRS rescue vessel „Hermann Marwede“

80m battery powered "Ampere I"



80m battery powered "Ampere I"



Megayacht Superstructure



Megayacht Superstructure



Megayacht Superstructure



Megayacht Superstructure



Superstructures for Fishing Vessels



Superstructures for fishing vessels

Conversion of upper aluminium and steel decks



Photo of the "Braemar" by dibbes

Conversion of RCCL passenger vessels



Structural repair of „Gotlandia II” within 25 days



Foto: Maja Suslin / Scanpix



Steel block with Outfitting for Offshore Supply Vessels (OSV)



High-tensile steel blocks for “Pride of America”



Steel hulls and constructions



“Gina Krog” living quarter



“Gina Krog” living quarter



“Gina Krog” living quarter



Stairhouses for Offshore platforms from basic engineering to final commissioning



Offshore constructions



Offshore constructions



Compressor enclosure



Air intake



Air intake



Air intake



Air intake



Emtunga Stairtower



Offshore ventilation ducts



Offshore ventilation ducts



Inside of Anti-icing module



Offshore zinced steel relings



Steel ladder with Duplex elements



Offshore davit steel foundation after welding and machining

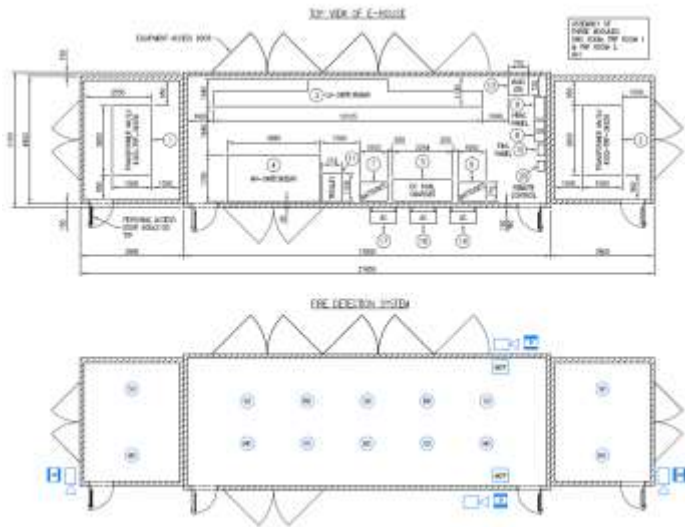


Offshore relings with stainless and (super) duplex elements



Engineering and manufacturing of E-houses and accommodation units

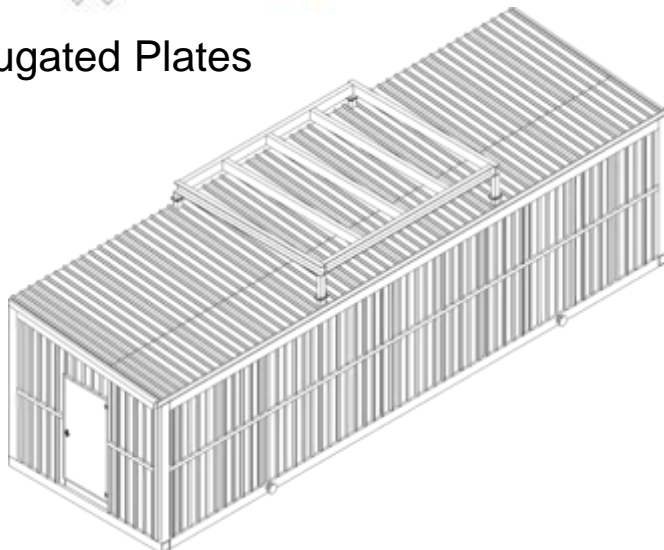
General Arrangement



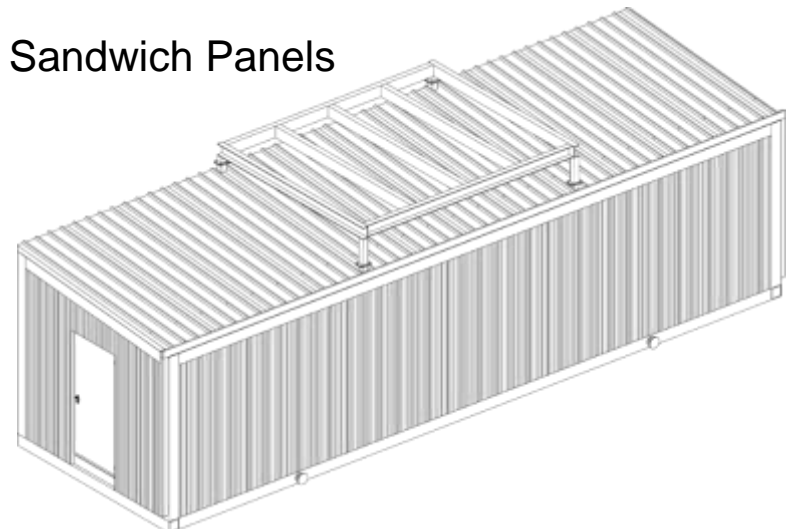
Structure Frame



Corrugated Plates



Sandwich Panels



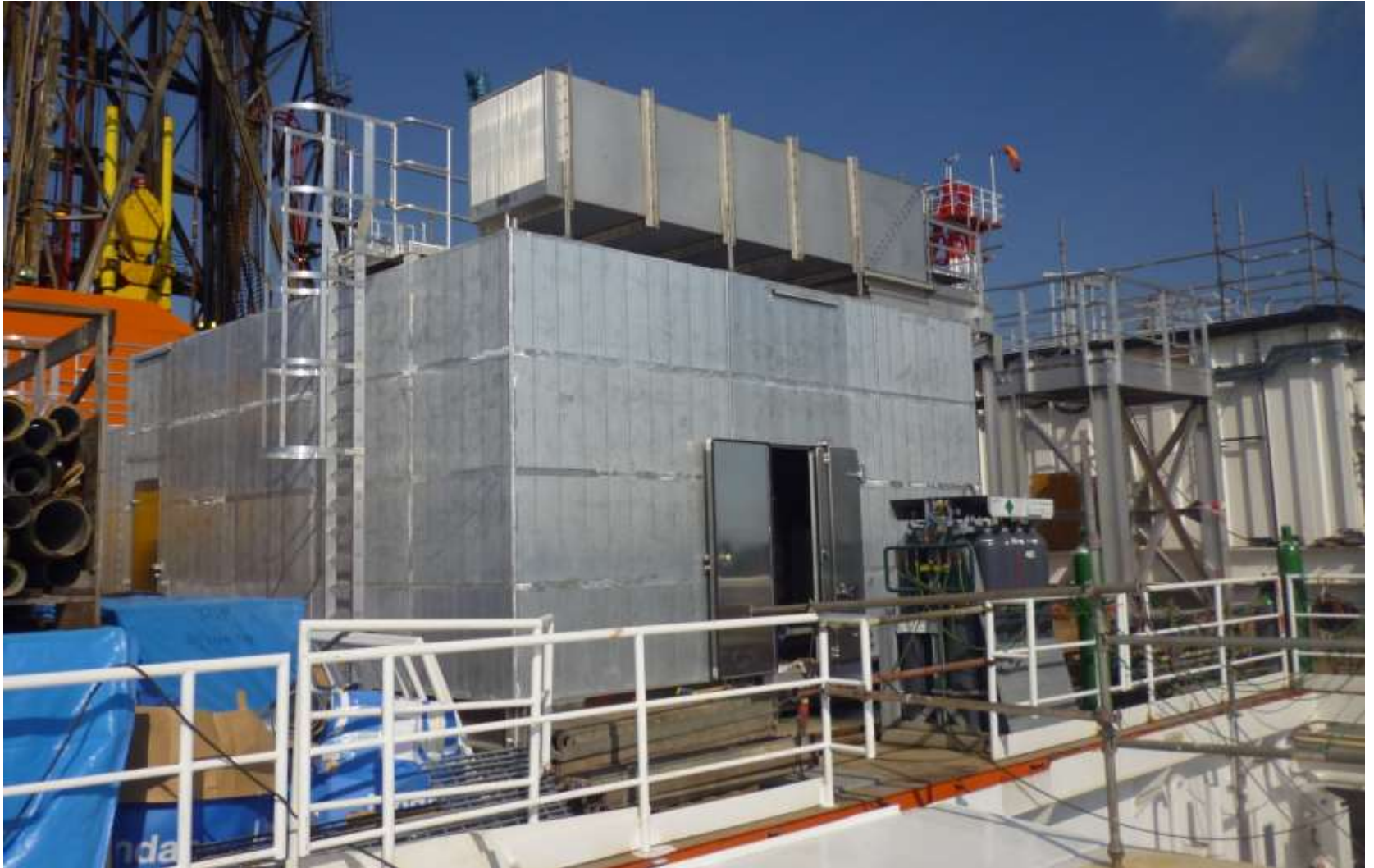
Offshore container



Plant Rooms



Mechanical Enclosure



High tensile steel offshore platforms



Worldwide service for construction and mounting



Grand Bahama Shipyard

Our team is permanently trained acc. HSE rules.



Highly developed QAM+QC system

Measuring equipment

Total Station 3D

Levelers

Laser Range finders

Roughness testers

Thickness testers

Hygro & Thermometers

Steel tapes, welding gouges, Calipers, etc.



Certificates



Lloyd's Register ISO 9001

ISO 45001 ISO 14001



Certified by all major IACS.



EN 1090-1,2,3 ISO 3834-2



and others...

Thank you

Thank you for the time,

We sincerely hope this presentation has helped to find out who we are and what we can do for you.

Please do not hesitate to contact us.

Looking forward to hearing from you

Kind regards

Götz Linzenmeier

Chairman / Founder

Telephones

Fax

Email:

Website:

+48 58 506 68 68

+48 58 506 68 69

contact@aluship.com

www.aluship.com