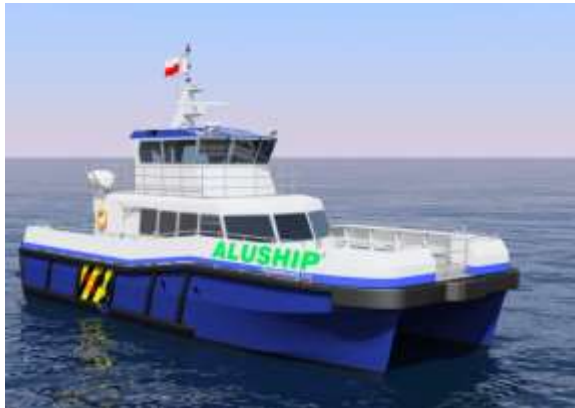




SECONDARY OFFSHORE STRUCTURES
STEEL + ALUMINIUM
WINDFARM SERVICE VESSELS
WELDING SERVICE WORLDWIDE



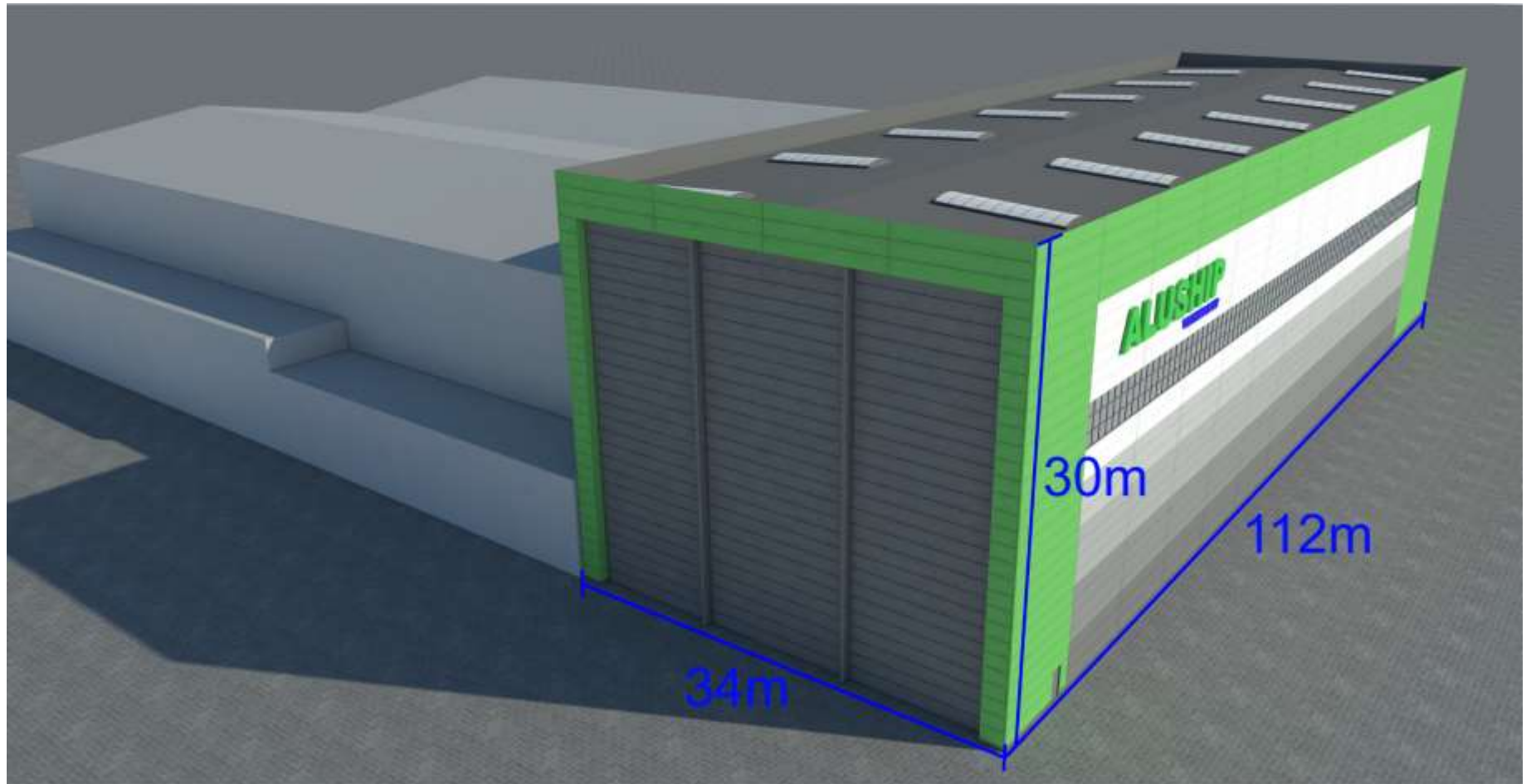
Aluship Technology has its own 4.5ha area in Gdansk harbour



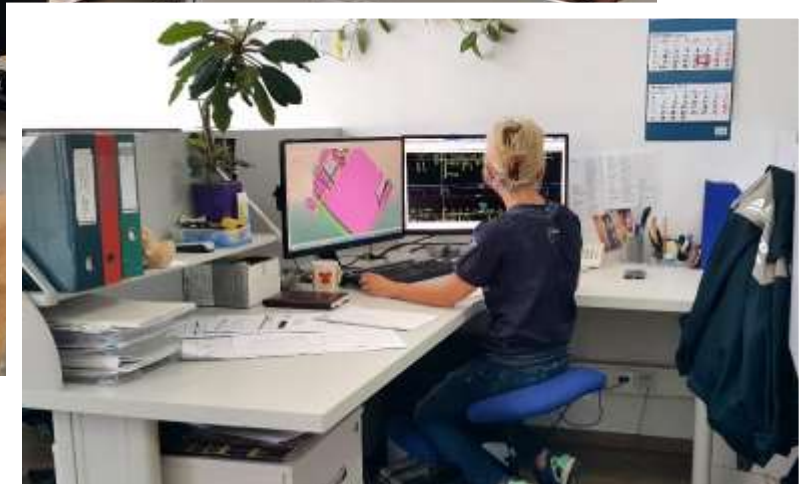
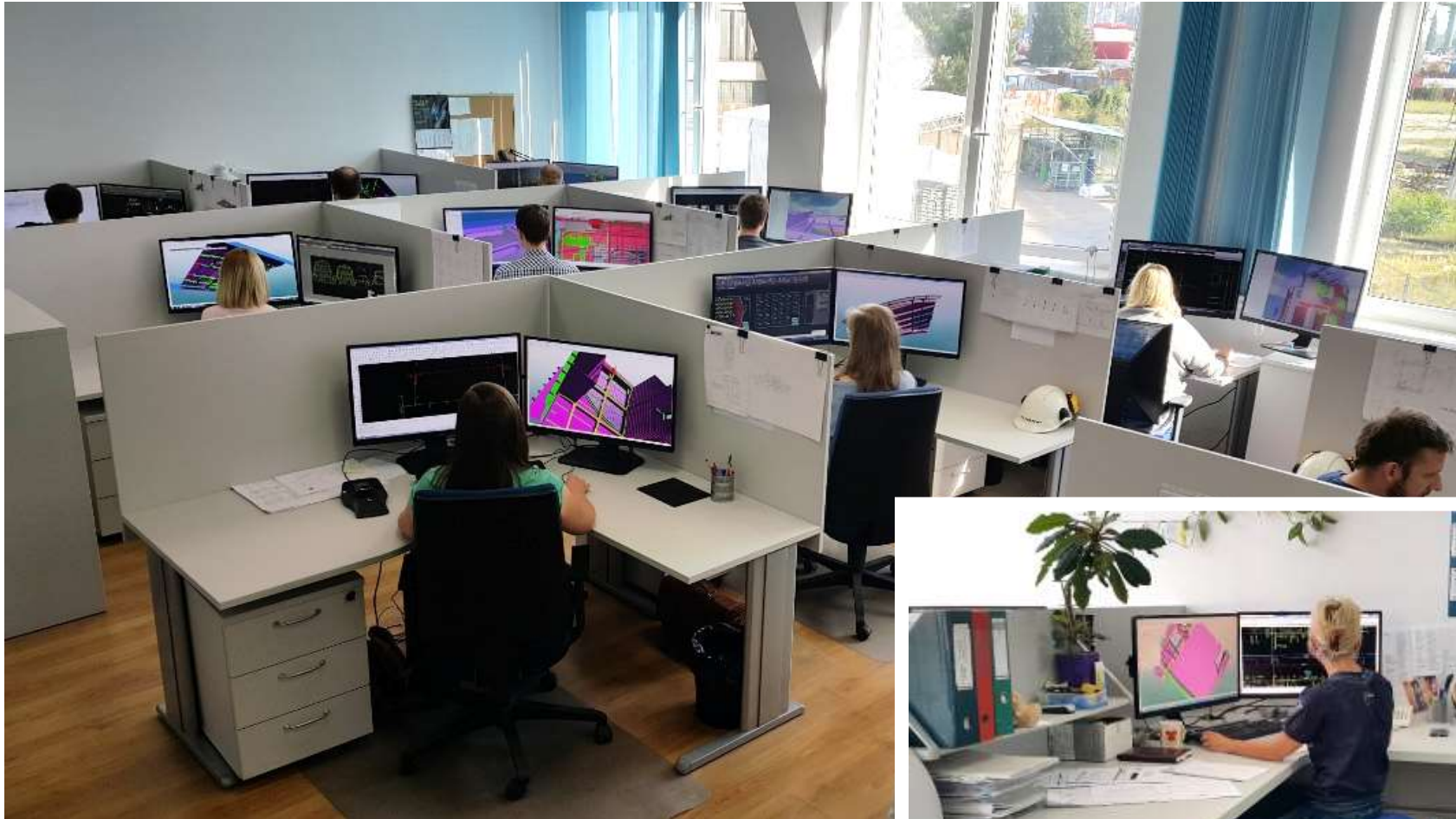
Production facilities in Gdansk harbour



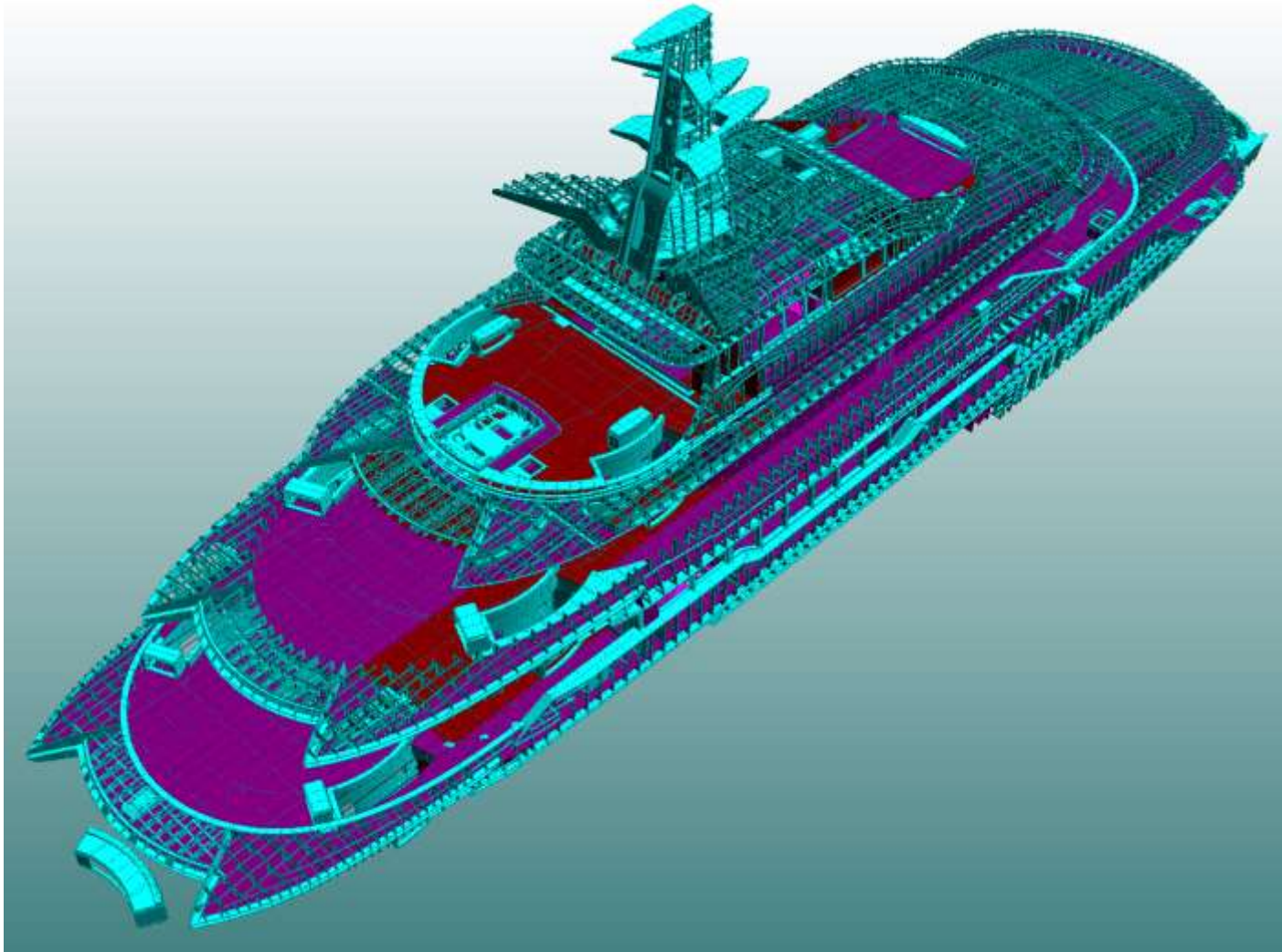
Investment plan for new hall of 3745m² floor space



Engineering office with 42 workstations

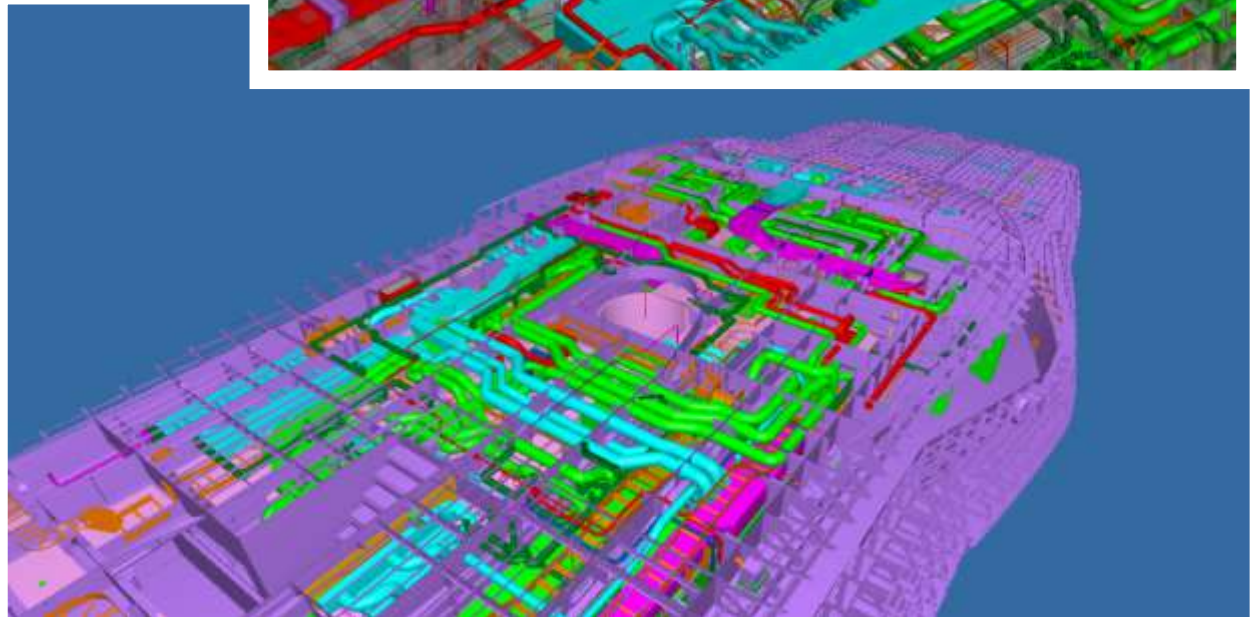
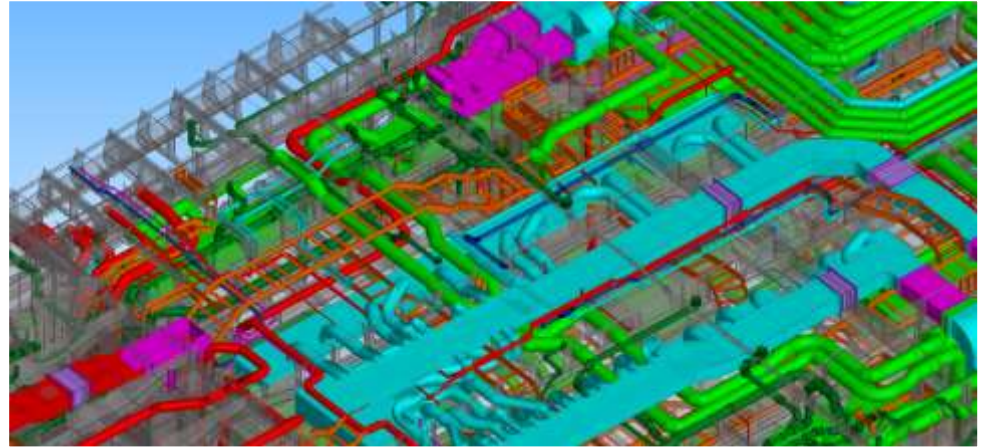
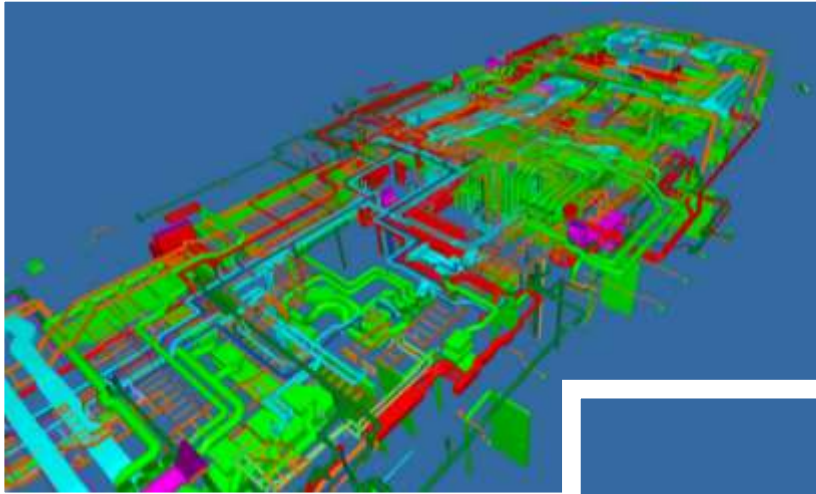


Structural design + engineering



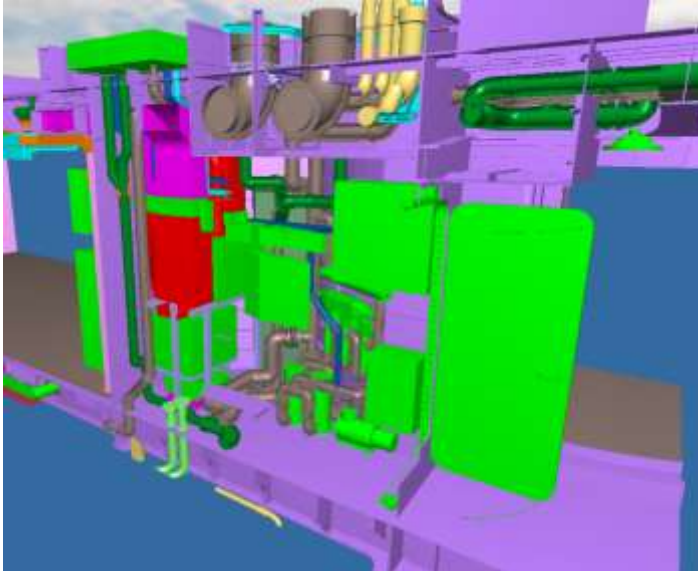
Coordination + outfitting engineering

Example coordination of superstructure piping systems

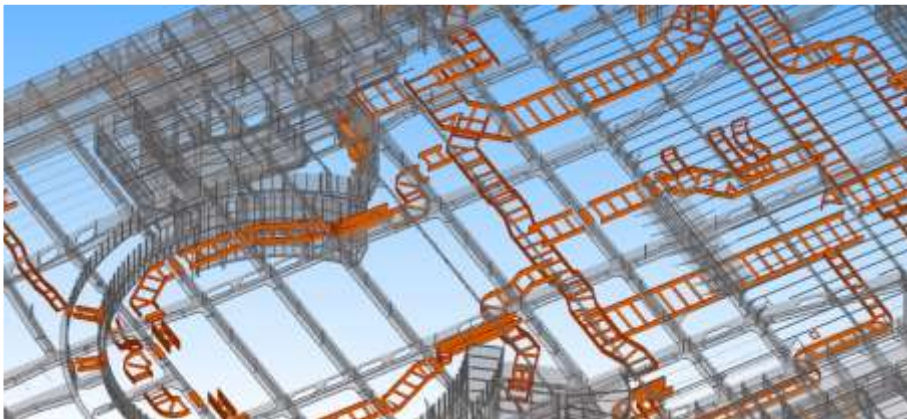
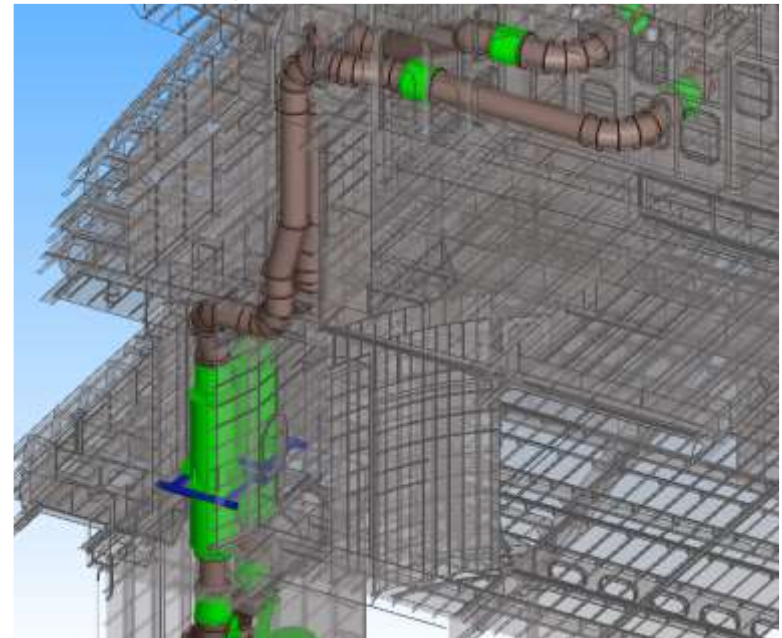


Coordination + outfitting engineering

Example arrangement of technical space



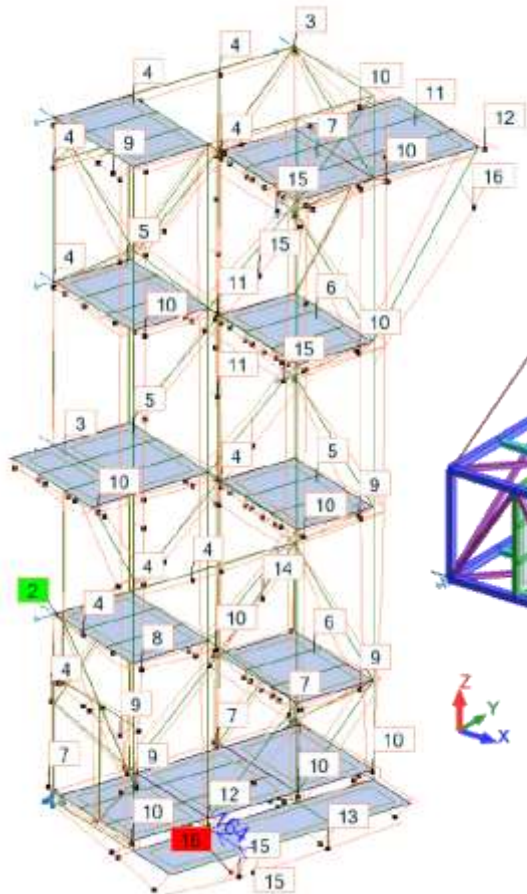
Example coordination of exhaust gas system with equipment parts



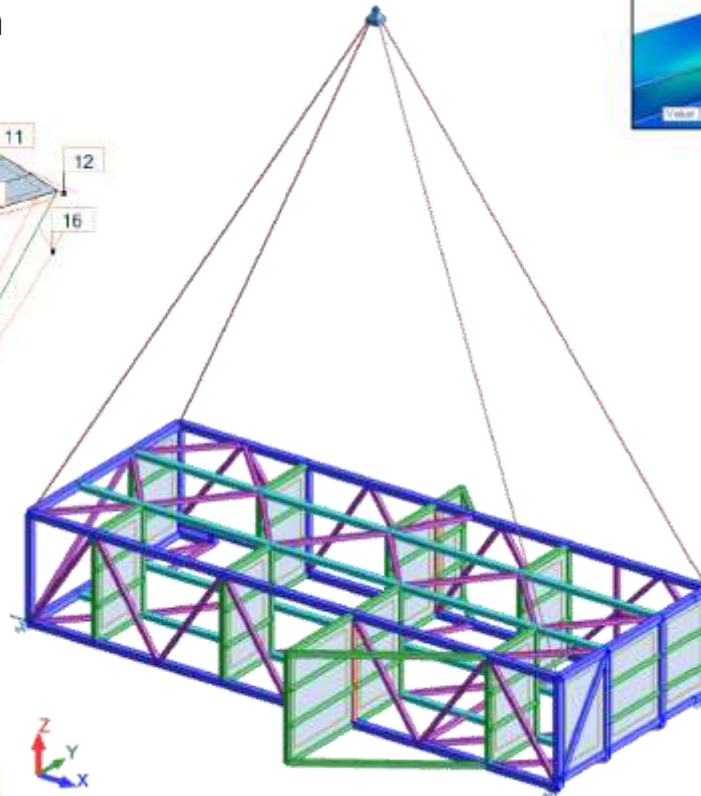
Example coordination of cable trays

Structural Calculation & FEM Analysis

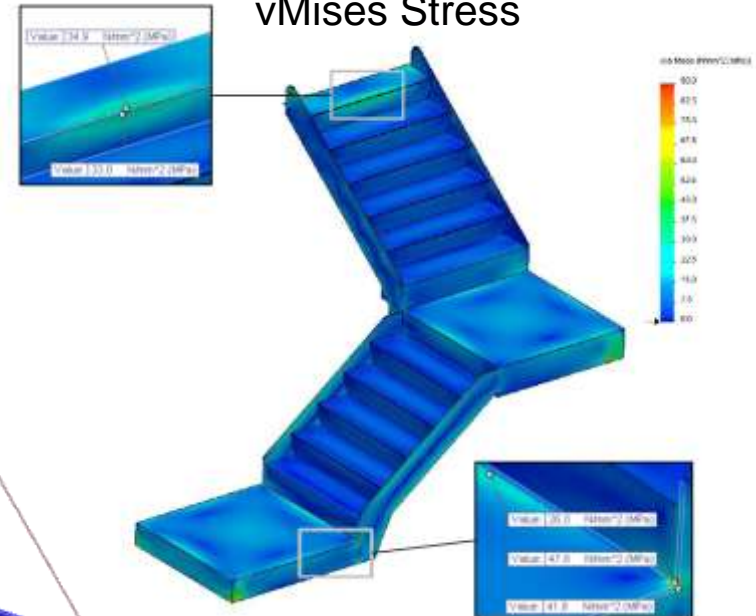
Bars deformation



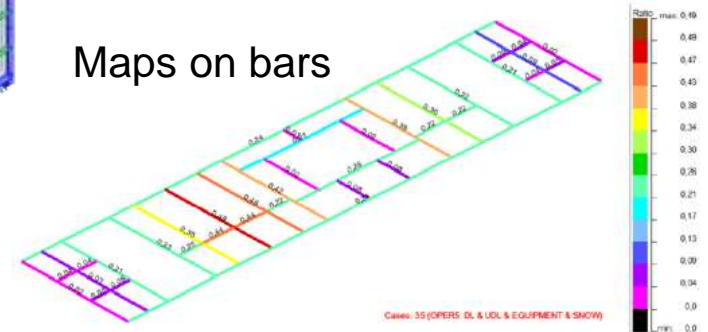
Lifting analysis



vMises Stress



Maps on bars



Production facilities



12 mtr one-side welding gantries
for aluminium and steel

Windfarm Service Vessel



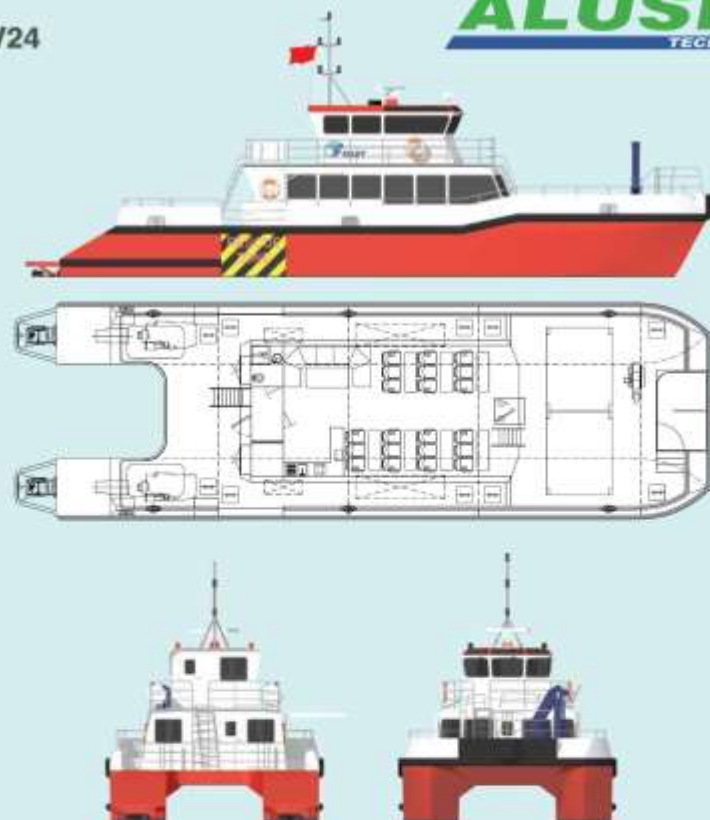
TSV24

Setting new standards for offshore wind support



- Improved Seakeeping
- Reduced Fuel Consumption
- Lower Emissions
- Improved Turbine Transfer Capability

TSV24



Principal Particulars

Hull Length	24.00 metres
Length Waterline	22.50 metres
Moulded Beam (Max)	7.70 metres
Hull Draught	1.00 metre

Propulsion Machinery

Main Engines	2 x CAT C18 ACERT @ 533 kW
Generators	2 x 17.5 kW ONAN
Propulsors	Waterjets / Propellers

Performance

Service Speed	26 knots
---------------	----------

Deadweight

Maintenance Technicians	21
Crew	3
Technician's Equipment	0.5 tonnes
Fuel	5.0 tonnes
Water	0.5 tonnes
Black Water	0.5 tonnes
General Stores	0.2 tonnes
Large Equipment Payload	3.0 tonnes
Total Deadweight	11.75 tonnes

Certification

UK MCA SCV Code Category 2



Principal Particulars

Hull Length	20.40 metres
Length Waterline	18.90 metres
Moulded Beam (Max)	7.40 metres
Hull Draught	1.00 metre
Air Draft	12.00 metres

Deadweight

Maintenance Technicians	12
Crew	3
Technician's Equipment	0.5 tonnes
Fuel	5.0 tonnes
Water	0.5 tonnes
Black Water	0.5 tonnes
General Stores	0.2 tonnes
Large Equipment Payload	3.0 tonnes
Total Deadweight	11 tonnes

Propulsion Machinery

Main Engines	2 x CAT C18 ACERT @ 533 kW
Generators	2 x 17.5 kW ONAN

Performance and Range

Service Speed	24 knots
---------------	----------

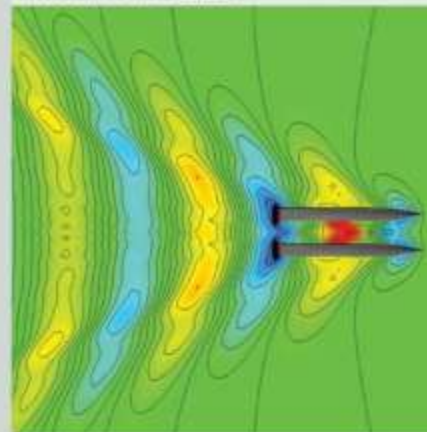
Classification

UK MCA - SCV Code - Category 2



High Efficiency Hull Form

BMT hull form offers up to 20% reduction in fuel consumption compared to existing wind farm vessels with similar payload.



Improved Seakeeping

Proven BMT hull form reduces accelerations and passenger sea sickness in rough weather conditions.



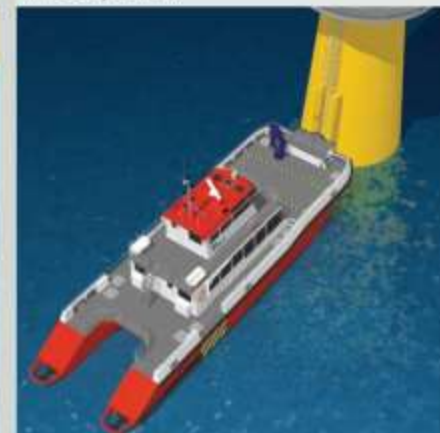
High Payload Capability

Passenger and cargo capacity of up to 7 tonnes with large forward cargo deck.

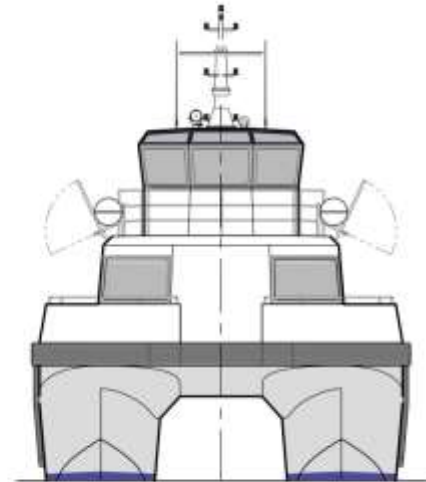


Improved Transfer Capability

Hull forebody design combined with high wet deck clearance provides improved capability for turbine transfer operations.



26,8m WSV with 24m load-line



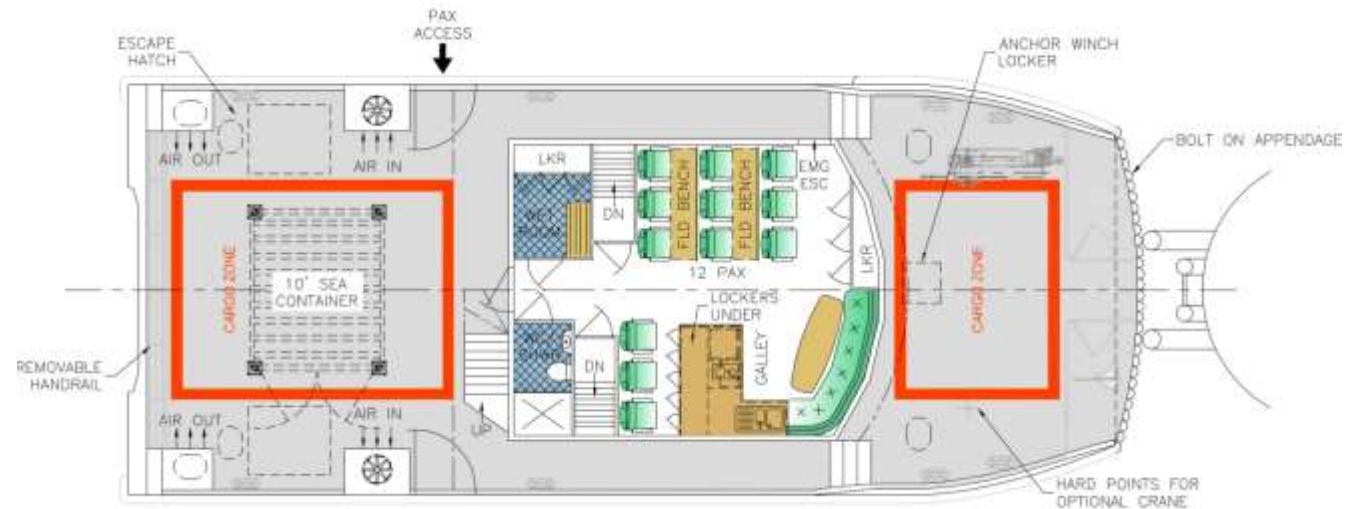
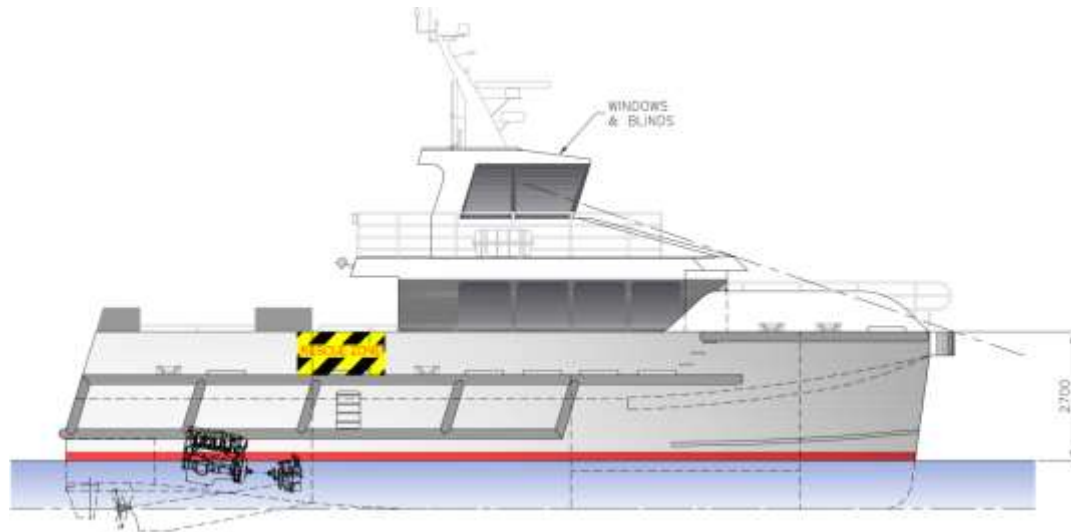
OUTBOARD PROFILE

VIEW ON BOW



PLAN VIEW ON MAIN DECK

18m catamaran WSC



Aluship Explorer 79



Special Shipbuilding



Superstructures for fishing vessels

46m SAR aluminium hull



DGzRS rescue vessel „Hermann Marwede“

„Anastasia“ 85m steel hull with Al-superstructure



Offshore windenergy rigging platforms



Offshore platforms in high tensile steel



Steel block with Outfitting for Offshore Supply Vessels (OSV)



High-tensile steel blocks for “Pride of America”



Steel accomodation



Aluminium construction with primer



Steel and aluminium constructions



Stairhouse for Offshore platform



Offshore constructions



Offshore constructions



Offshore ventilation ducts



Offshore ventilation ducts



Offshore ventilation system



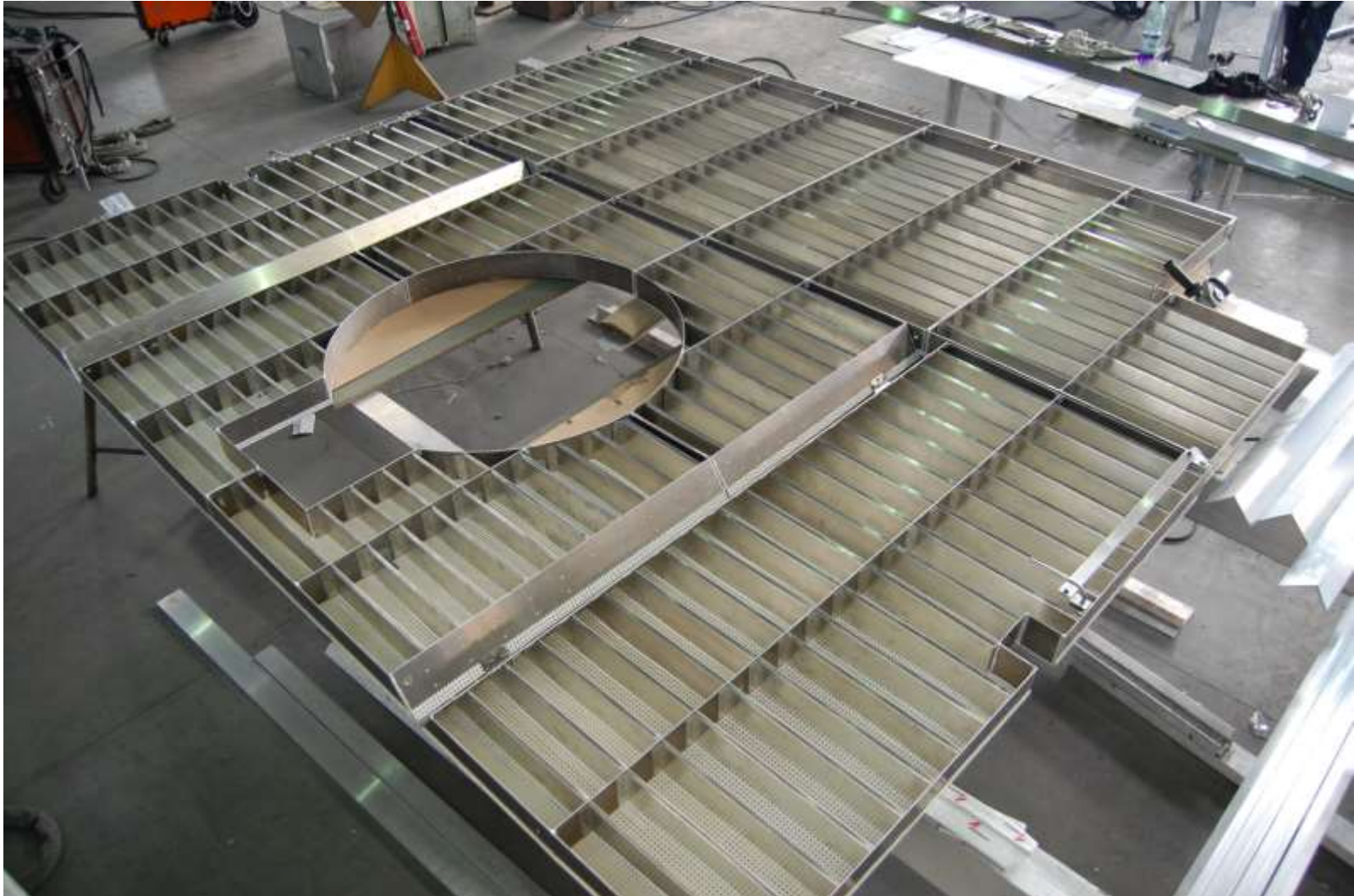
Offshore ventilation ducts



Offshore filter unit



ATEX – Explosion proof wall



Compressor enclosure's skirt and junction box



Anti-icing module for ventilation system



Worldwide service for construction and mounting



Grand Bahama Shipyard

Air intake



Air intake



Air intake



Generator enclosure



Air intake



Compressor enclosure



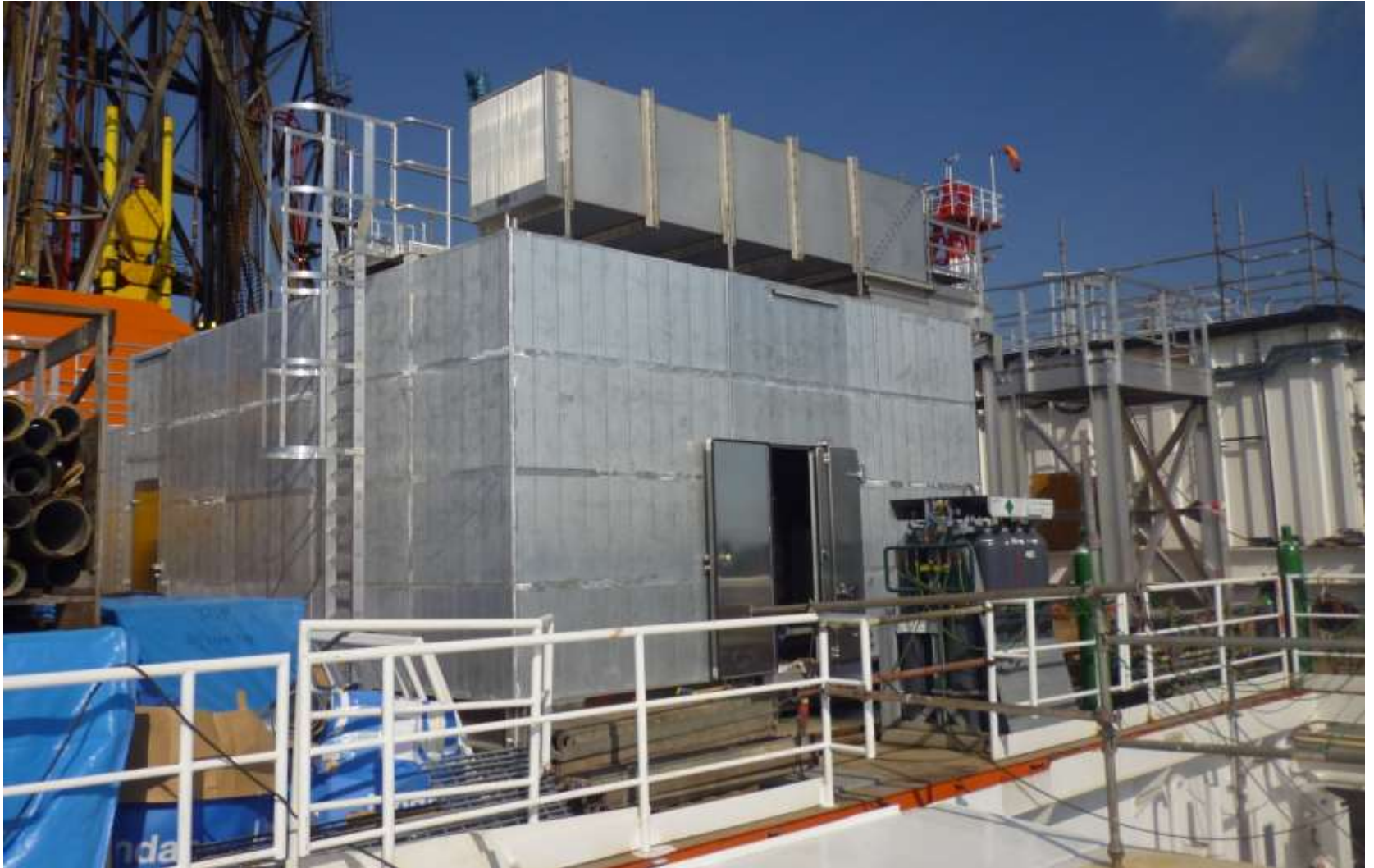
Plant Rooms



Our team is permanently trained acc. HSE rules.



Plant Rooms



Highly developed QAM+QC system

Measuring equipment

Total Station 3D



Levelers



Laser Range finders



Roughness testers



Thickness testers



Hygro & Thermometers



Steel tapes, welding gouges, Calipers, etc.

Certificates



Lloyd's Register ISO 9001

ISO 45001 ISO 14001



Certified by all major IACS.



EN 1090-1,2,3 ISO 3834-2



and others...

Thank you

Thank you for the time,

We sincerely hope this presentation has helped to find out who we are and what we can do for you.

Please do not hesitate to contact us.

Looking forward to hearing from you

Kind regards

Götz Linzenmeier
Chairman / Founder

Telephones
Fax
Email:
Website:

+48 58 506 68 68
+48 58 506 68 69
contact@aluship.com
www.aluship.com