



Engineering Manufacturing  
Aluminium Stainless Steel  
Maritime Offshore Onshore  
Newbuilding Conversion

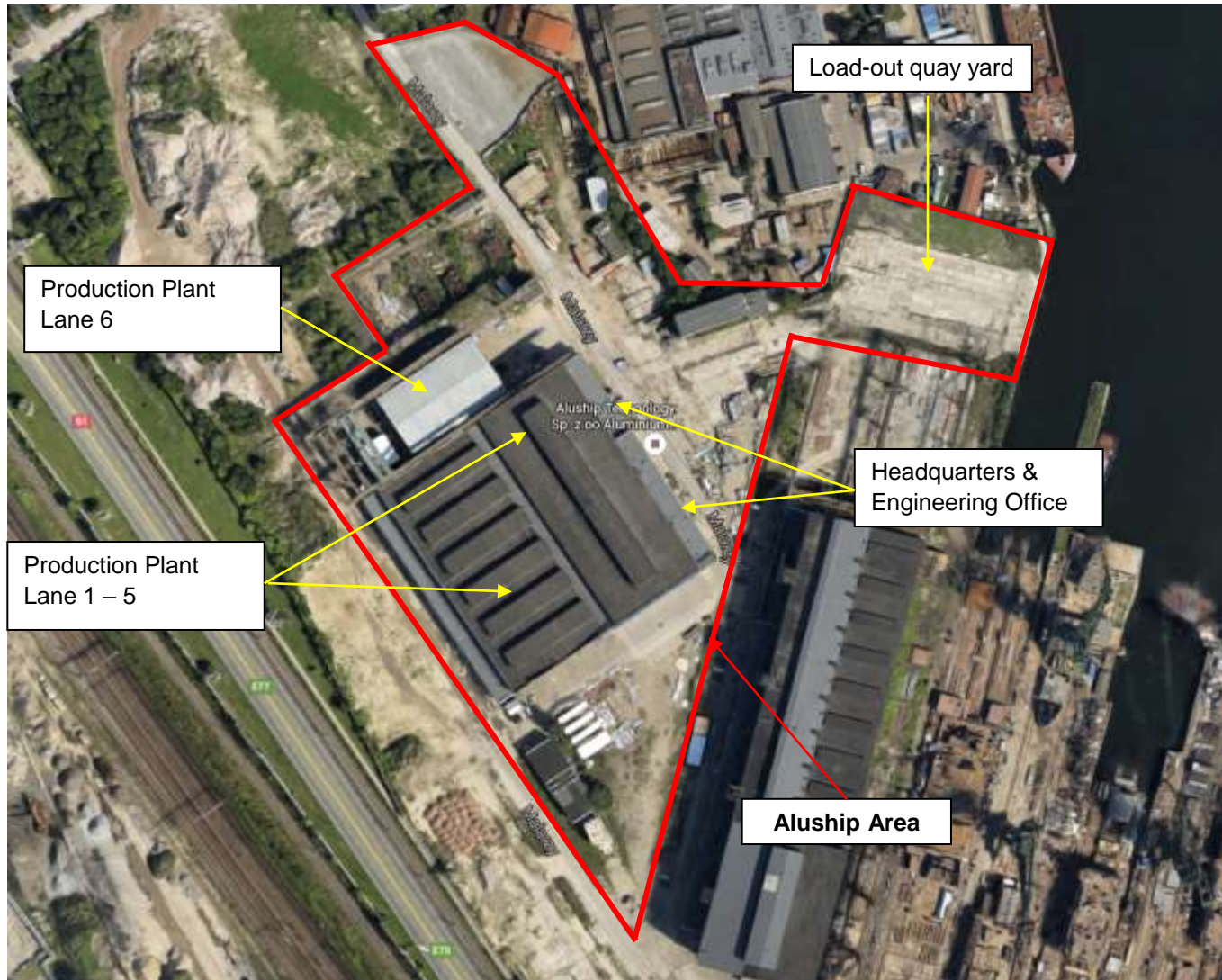




Highly skilled staff of 150 employees  
Strongly committed to quality,  
safety and performance



Aluship Technology has its own 4.5ha area in Gdansk, Poland harbour

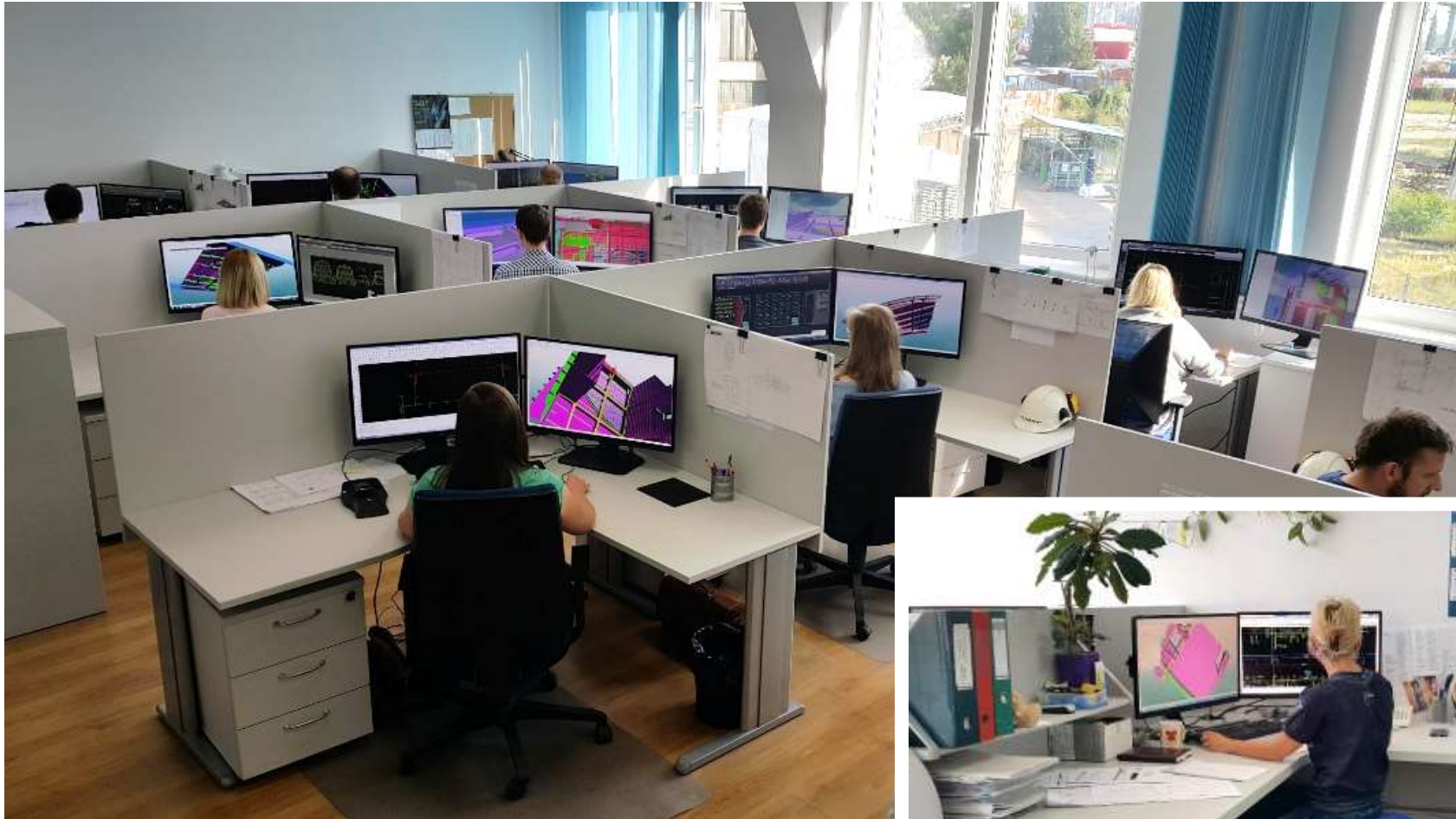




## Production facilities in Gdansk harbour

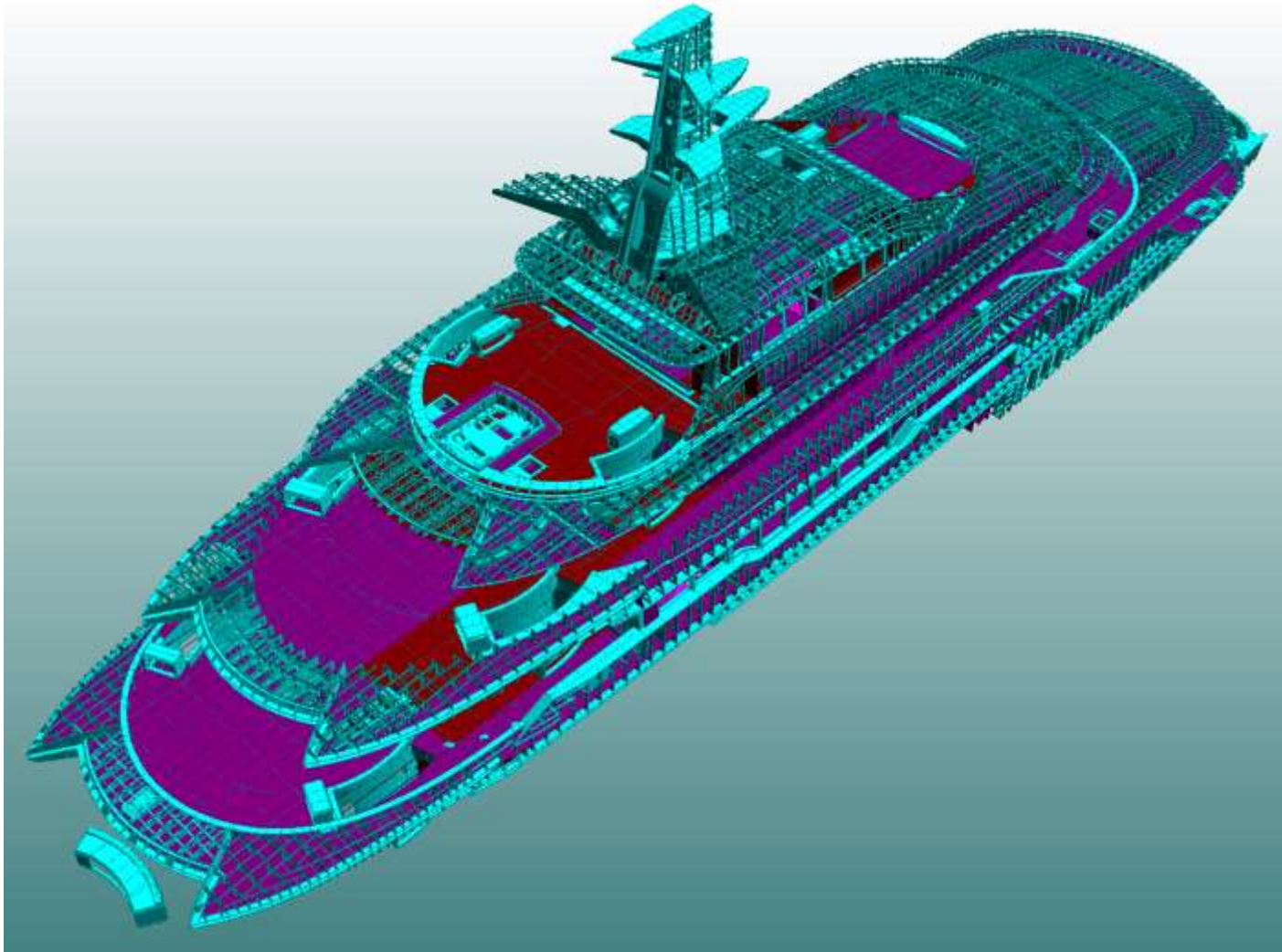


## Engineering office with 42 workstations



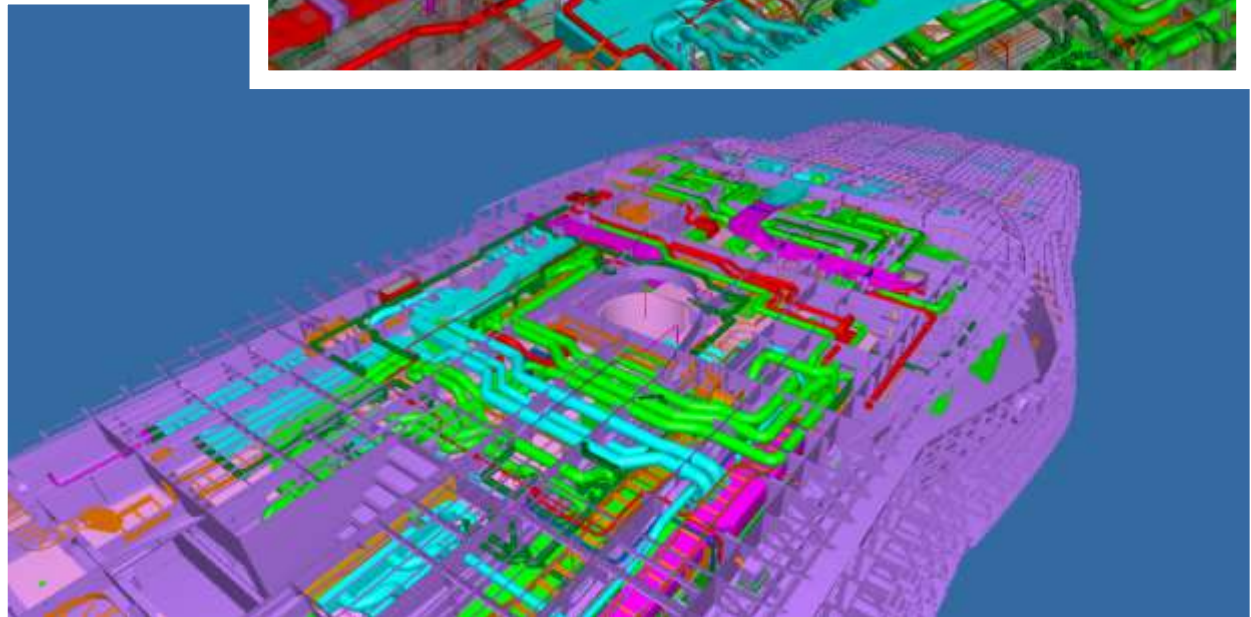
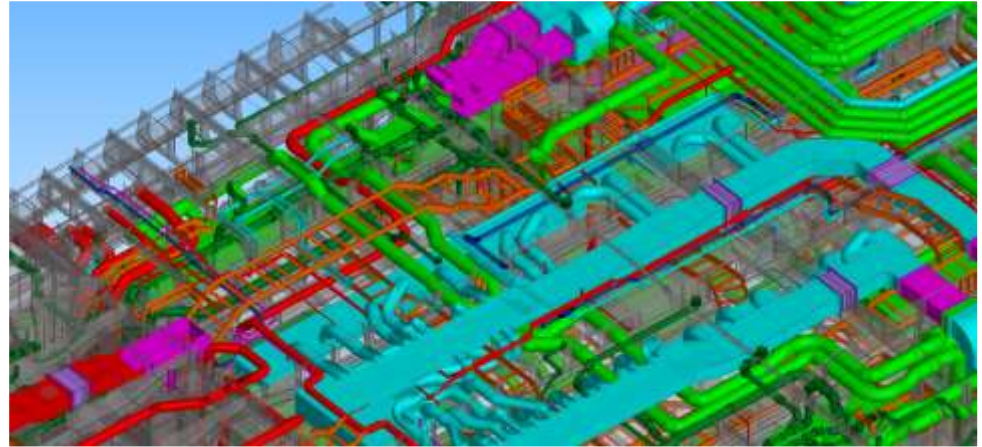
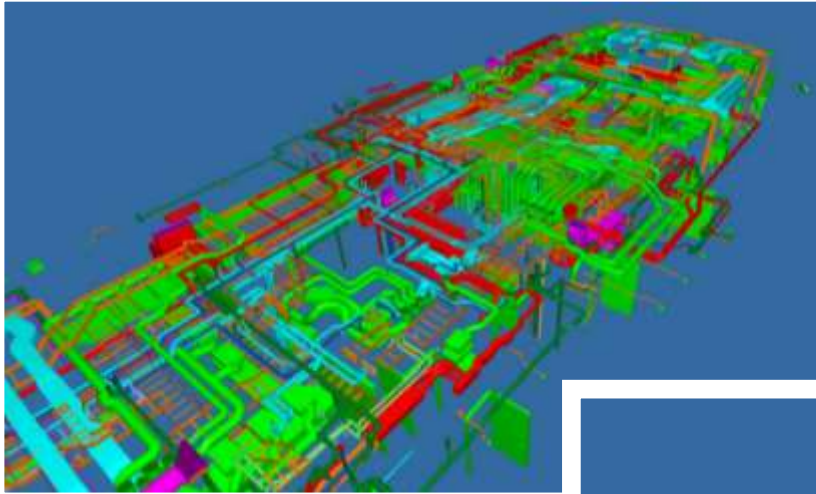


## Structural design + engineering



## Coordination + outfitting engineering

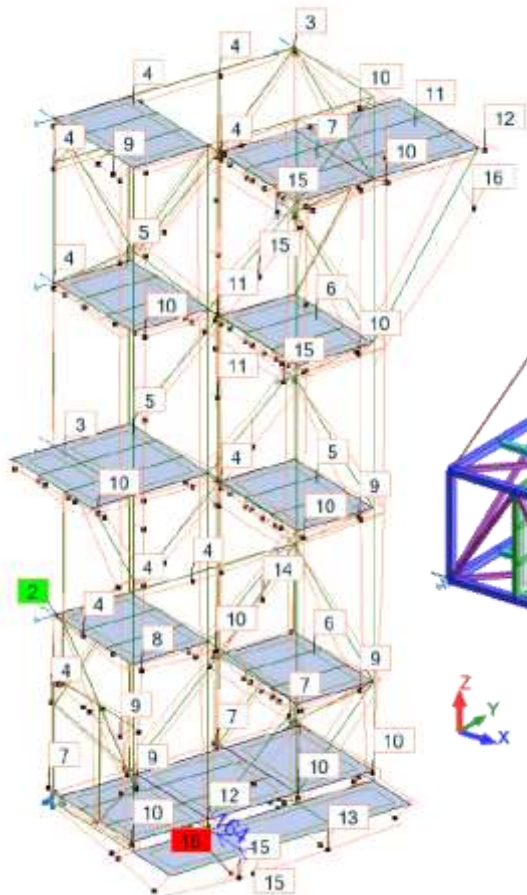
Example coordination of superstructure piping systems



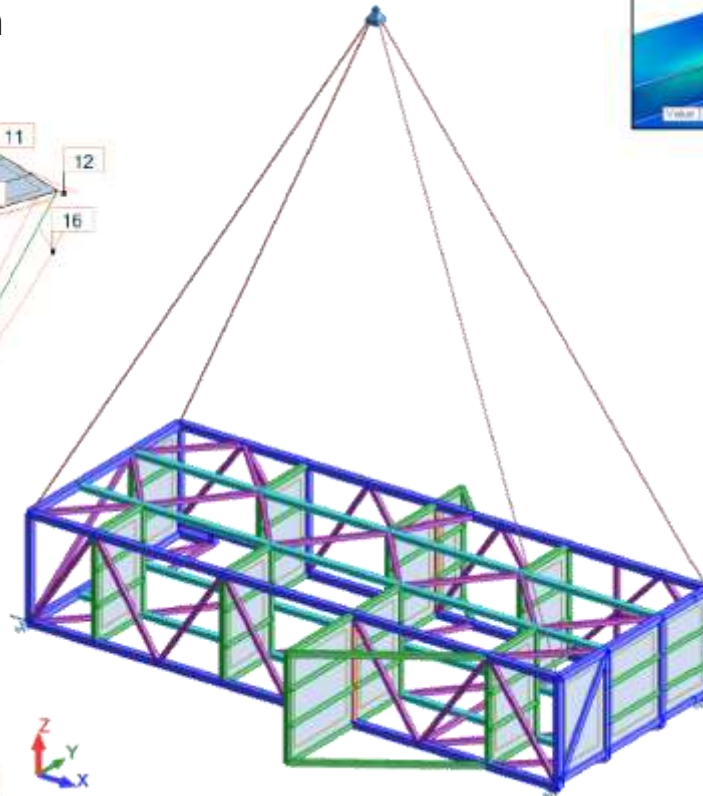


## Structural Calculation & FEM Analysis

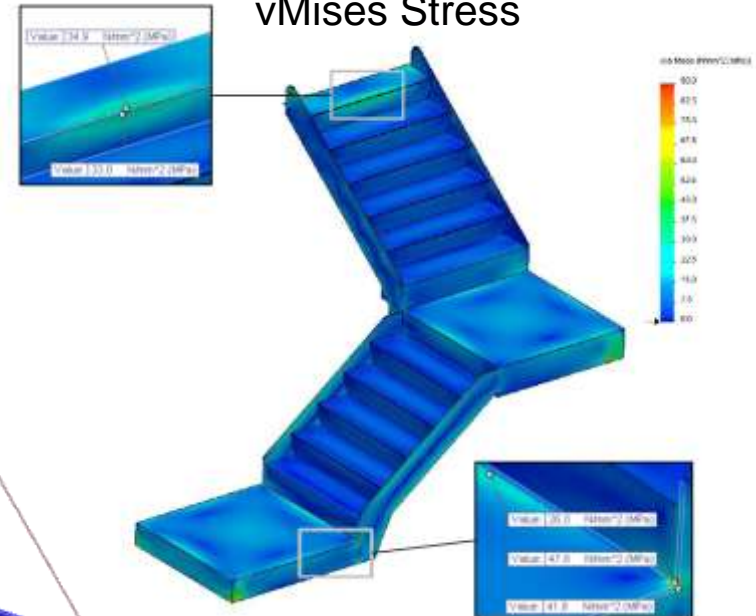
Bars deformation



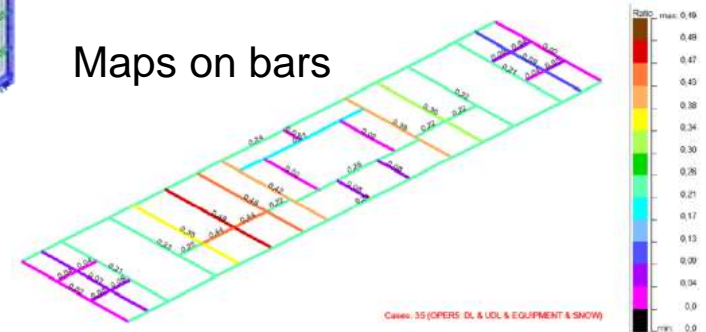
Lifting analysis



vMises Stress



Maps on bars





## Production facilities



12 mtr one-side welding gantries  
for aluminium and steel

From technical design to final  
commissioning



The superstructures for „Aida Vita“ and sister ship



## Superstructures



### The scope of activities included

- complete revision and improvement of existing technical Al-design projects,
- complete classification process,
- consulting our client for special equipment and devices for aluminium superstructures,
- developing specific trapezoid panel with extrusion tool,
- class - construction - workshop drawings,
- lofting, nesting, plasma cutting docs,
- plasma cutting and marking,
- complete mounting and welding of all sections,
- complete mounting of ready blocks on steel hull at our clients premises,
- complete drawings and construction of outfitting parts including windscreens, foundations for lifts and other equipment,



The superstructures for „Aida Vita“ and sister ship

## Redesign of superstructure into aluminium

### **Aluship Technology delivered full service package consisting of:**

- complete conversion of steel construction into specific aluminium panel design achieving up to 64% of weight reduction,
- FE-AI calculation,
- complete classification process with ABS / RINA and approval of drawings,
- consulting our client for special equipment and devices for aluminium superstructures,
- CAD/CAM, lofting, nesting, plasma cutting documents,
- plasma-cutting,
- complete mounting/welding of all sections,
- complete mounting/welding of pins for insulation, piping, cabling,
- complete mounting of ready sections on steel hull at our client's premises



Aluship design = 64% weight saving !



## 80m battery powered "Ampere I"



## 87.5m Hybrid ferry hull





## Navy Superstructures



Naval superstructures for TKMS Hellenic Shipyards

## 46m SAR aluminium hull



DGzRS rescue vessel „Hermann Marwede“



## „Anastasia“ 85m steel hull with Al-superstructure





## „Anastasia“ 85m steel hull with Al-superstructure





## Megayacht Superstructures



## Megayacht Superstructures





## Megayacht Superstructures



## Megayacht Superstructures





## Megayacht Superstructures



## Megayacht Superstructures





## Megayacht Superstructures



## Secondary structures for Renewable Offshore

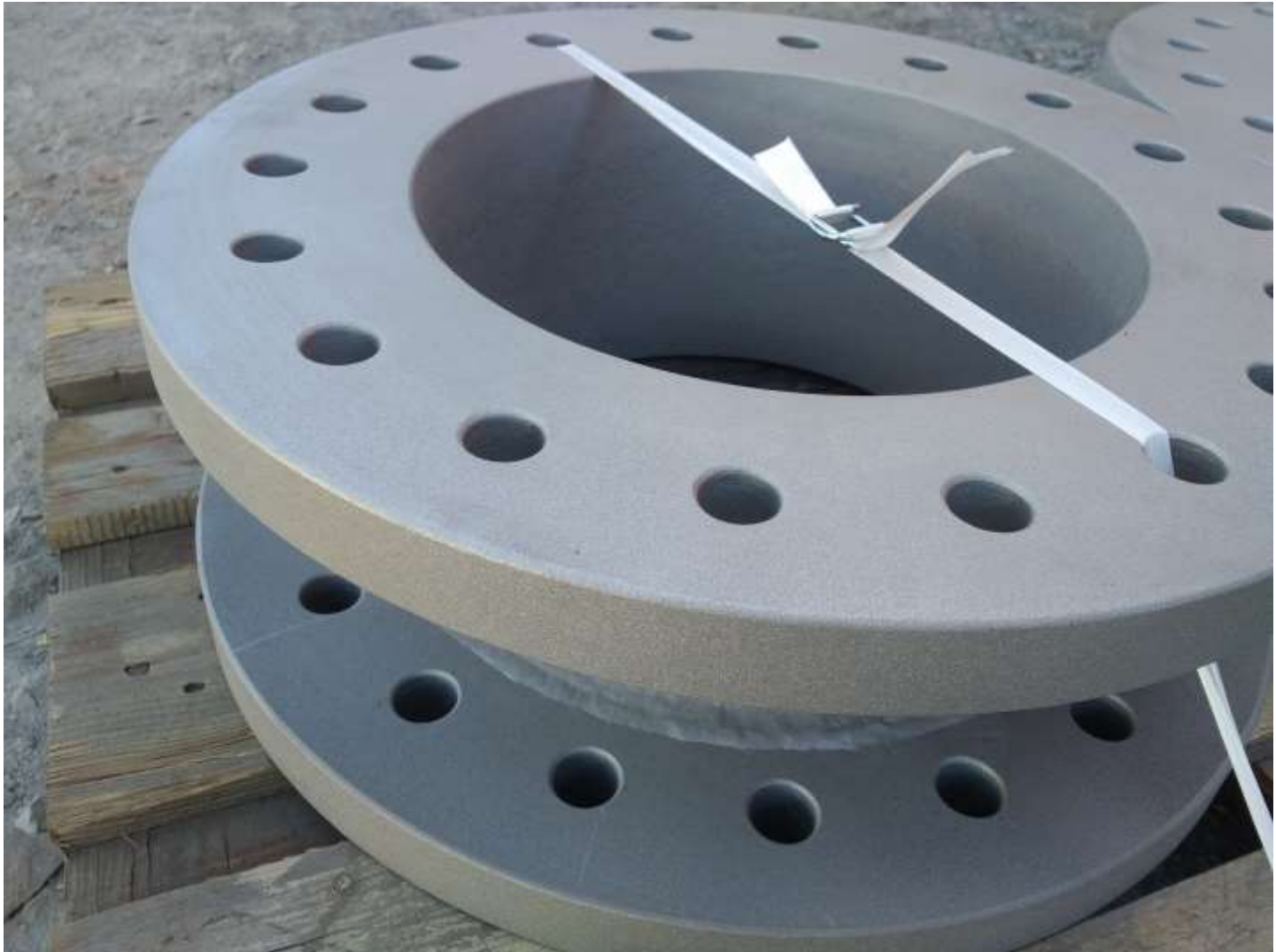




### Secondary structures for Renewable Offshore



## Secondary structures for Renewable Offshore





## Secondary structures for Renewable Offshore



## Steel accomodation





## Special Shipbuilding



Superstructures for fishing vessels

## Steel and aluminium constructions





## Offshore windenergy rigging platforms



## Offshore platforms in high tensile steel

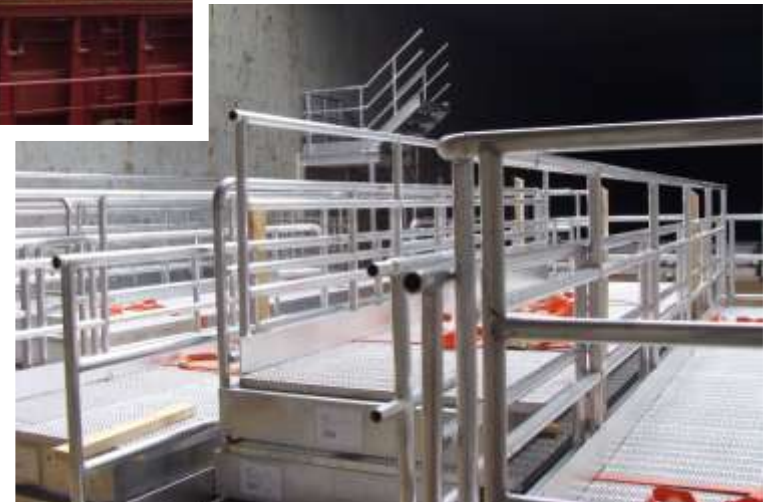




## Scrubber + Scrubber housing



## Emtunga Stairtower





## Aluship 79 Vripack Explorer



## 24m Explorer MY interior





## Conversion of „Fred Olsen”



## Structural repair of „Gotlandia II” within 25 days



Photo: Maja Suslin / Scanpix





## Conversion of upper aluminium and steel decks



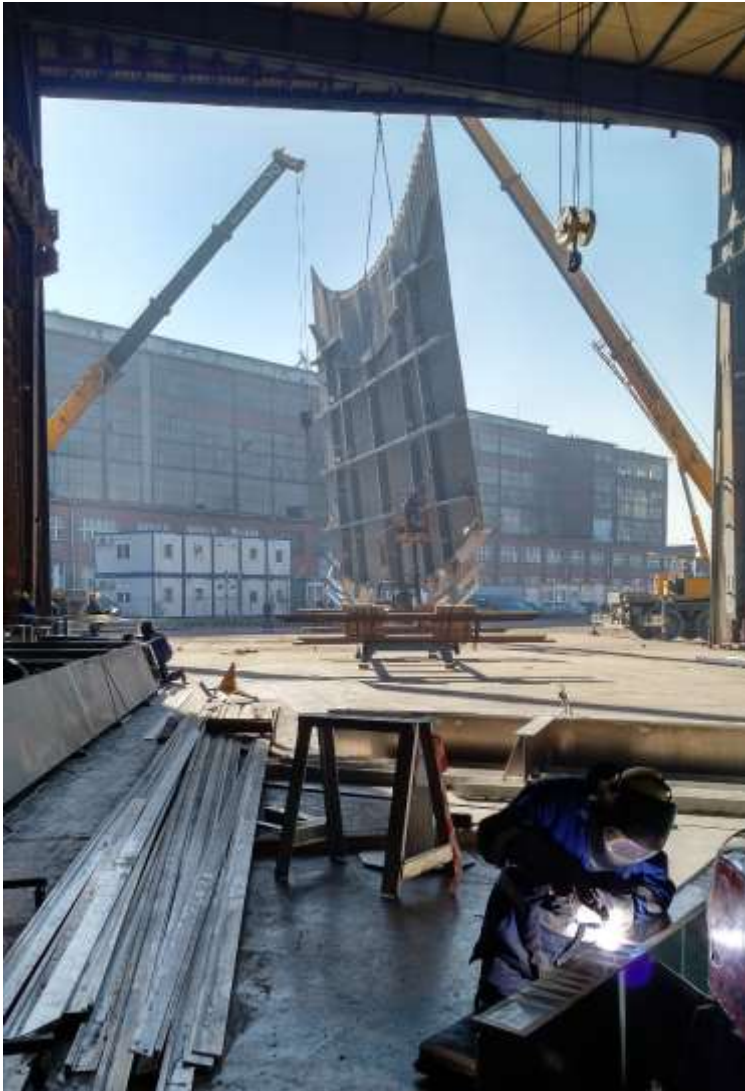
Photo of the "Braemar" by dibbes

## Conversion of RCCL passenger vessel





Worldwide service for construction and mounting



Worldwide service for construction and mounting



Grand Bahama Shipyard



## “Gina Krog” living quarter



## “Gina Krog” living quarter

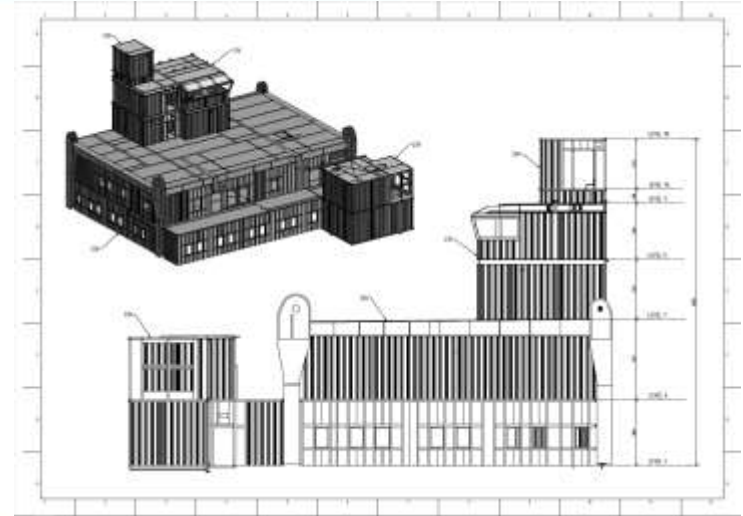




## “Gina Krog” living quarter



## “Gina Krog” living quarter





## Stairhouse for Offshore platform



## Offshore constructions





## Offshore constructions



## Bespoke containers





## Compressor enclosure



## Compressor enclosure





## Plant Rooms



## Mechanical Enclosure





Our team is permanently trained acc. HSE rules



## Highly developed QAM+QC system

### Measuring equipment

Total Station 3D

Levelers

Laser Range finders

Roughness testers

Thickness testers

Hygro & Thermometers

Steel tapes, welding gouges, Calipers, etc.





## Certificates



Lloyd's Register ISO 9001

ISO 45001      ISO 14001



Certified by all major IACS.



EN 1090-1,2,3      ISO 3834-2



and others...

# Thank you

Thank you for the time,

We sincerely hope this presentation has helped to find out who we are and what we can do for you.

Please do not hesitate to contact us.

Looking forward to hearing from you

Kind regards

*Götz Linzenmeier*  
Chairman / Founder

Telephones  
Fax  
Email:  
Website:

+48 58 506 68 68  
+48 58 506 68 69  
[contact@aluship.com](mailto:contact@aluship.com)  
[www.aluship.com](http://www.aluship.com)