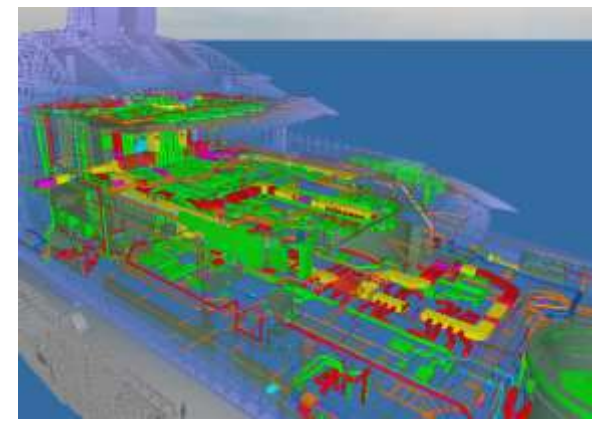
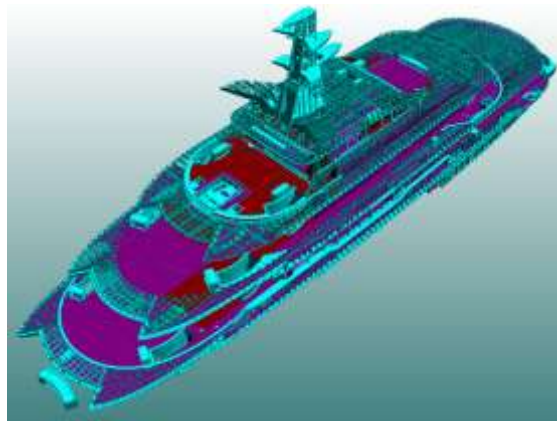




STRUCTURAL DESIGN + ENGINEERING  
COORDINATION + OUTFITTING ENGINEERING



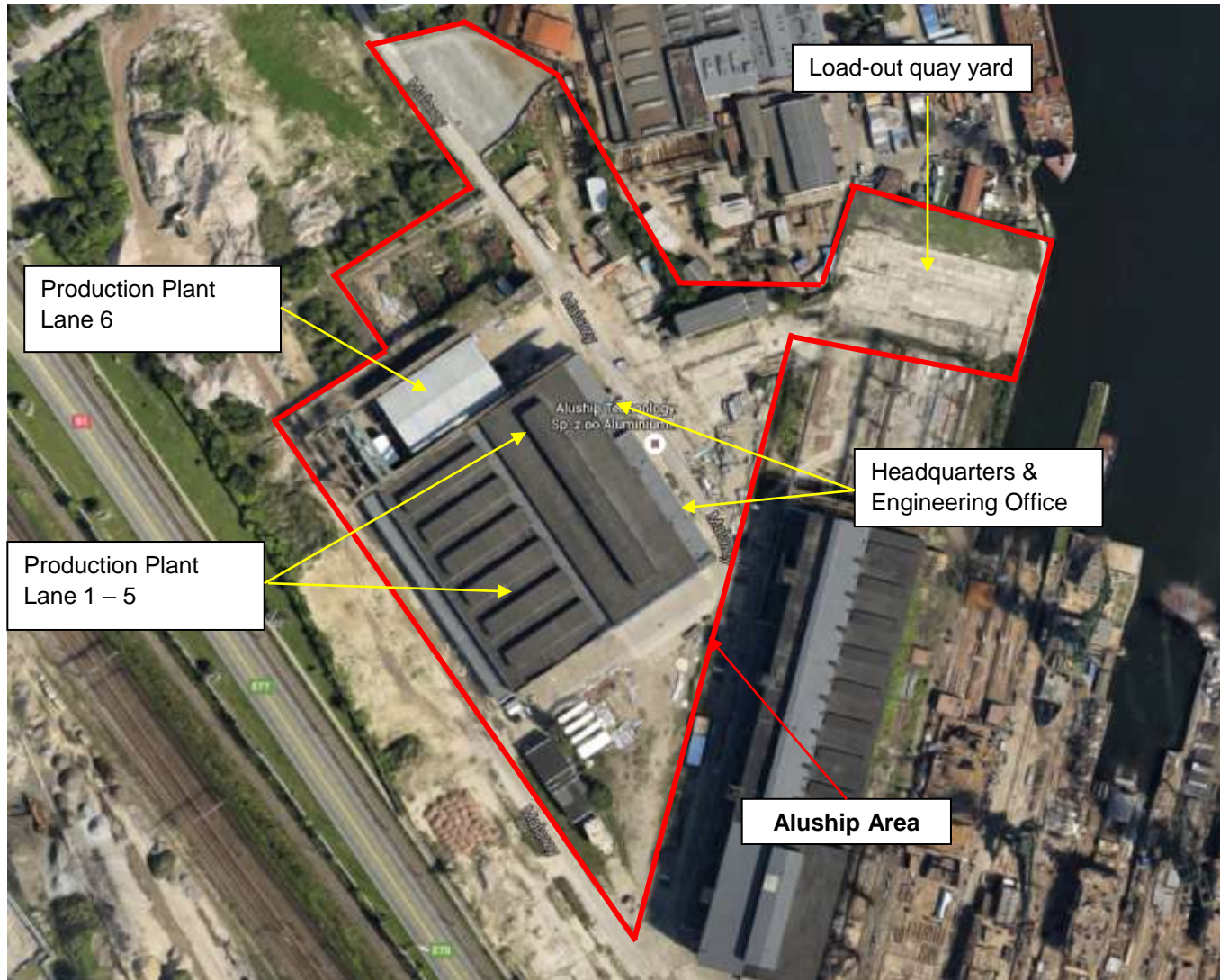
# **ALUSHIP<sup>®</sup>**

## **TECHNOLOGY**

CONSTRUCTION + MOUNTING SERVICE WORLDWIDE  
ALUMINIUM + STAINLESS + STEEL  
NEW BUILD    CONVERSION    REPAIR



Aluship Technology has its own 4.5ha area in Gdansk harbour

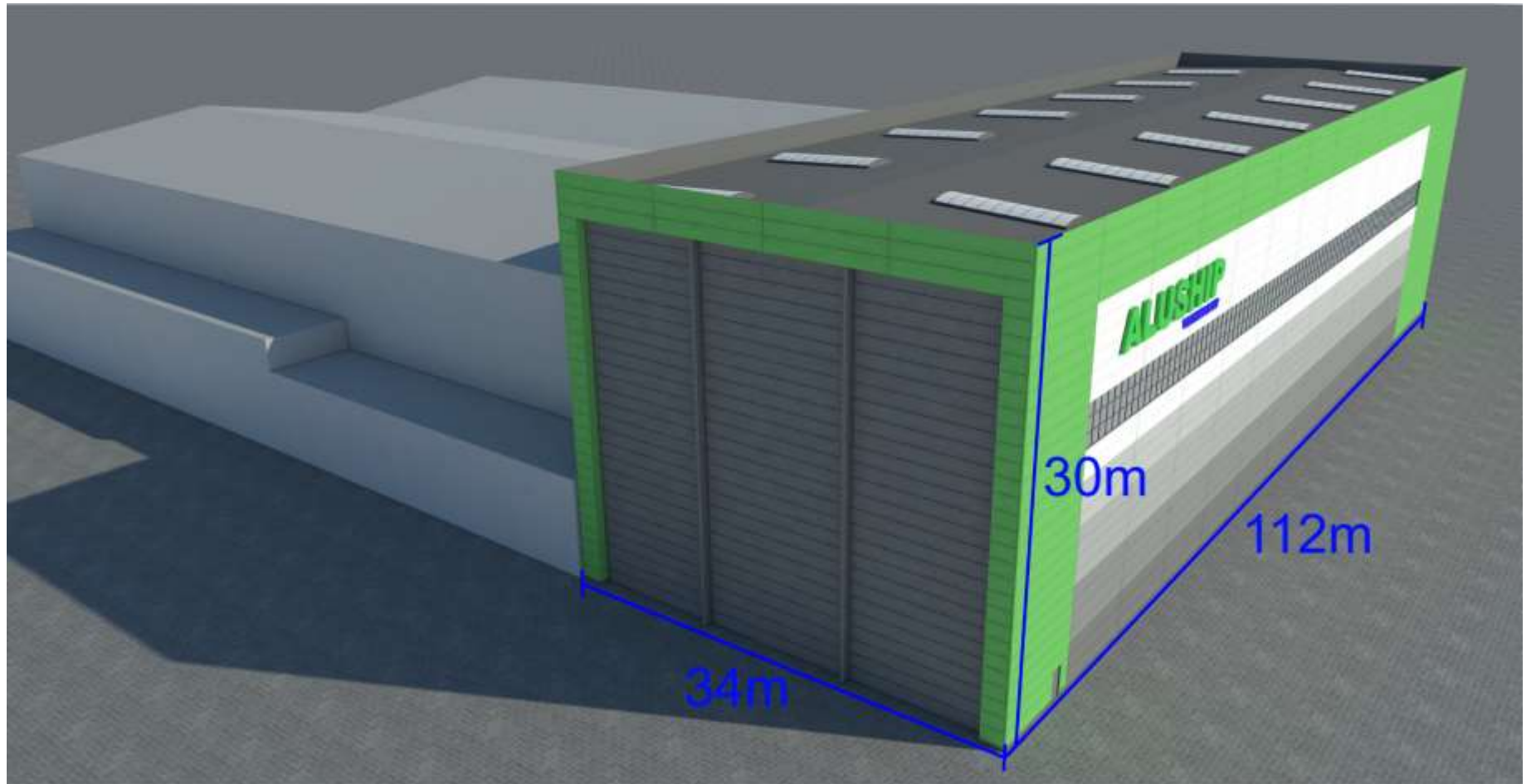




## Production facilities in Gdansk harbour

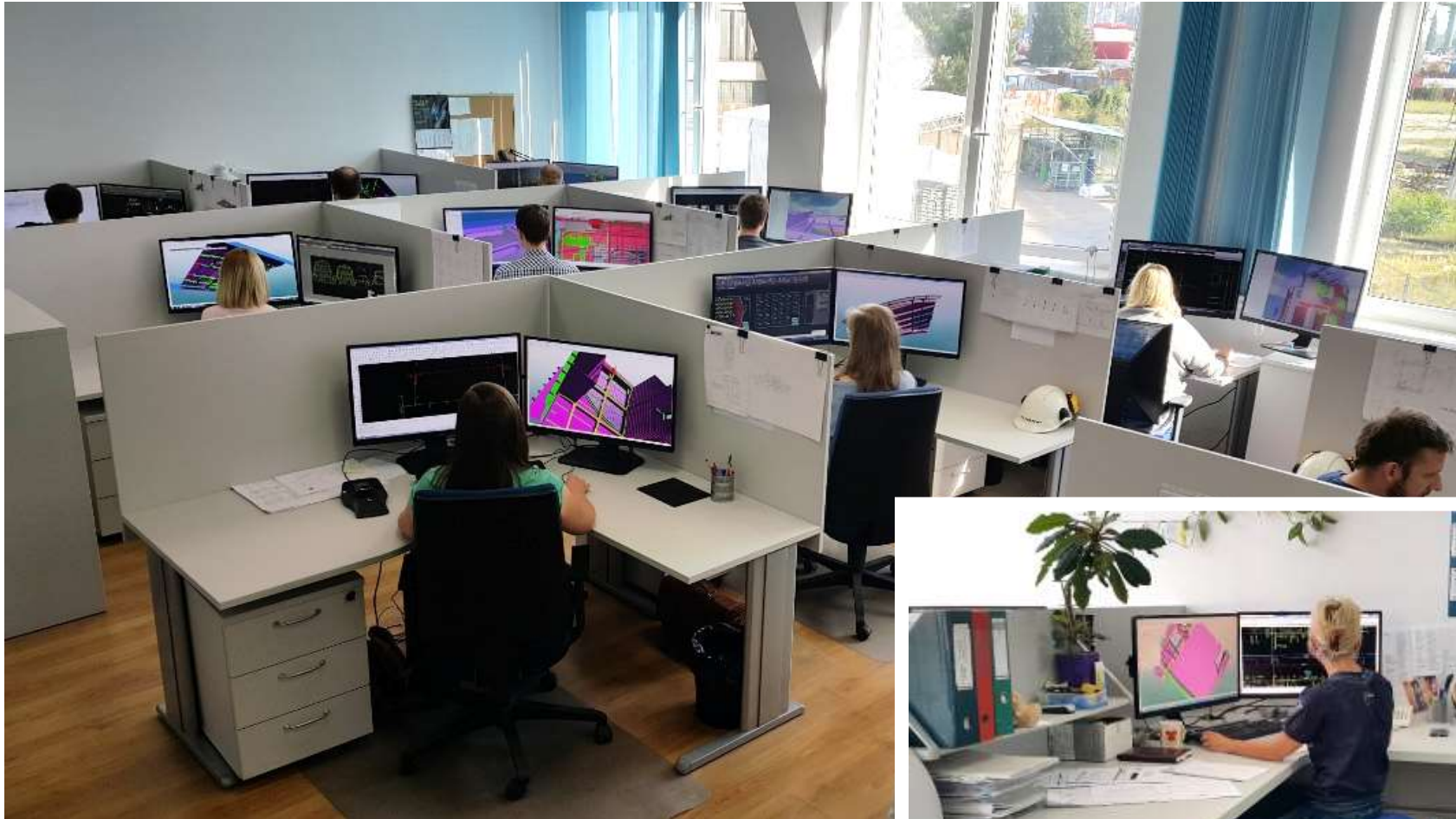


Investment plan for new hall of 3745m<sup>2</sup> floor space

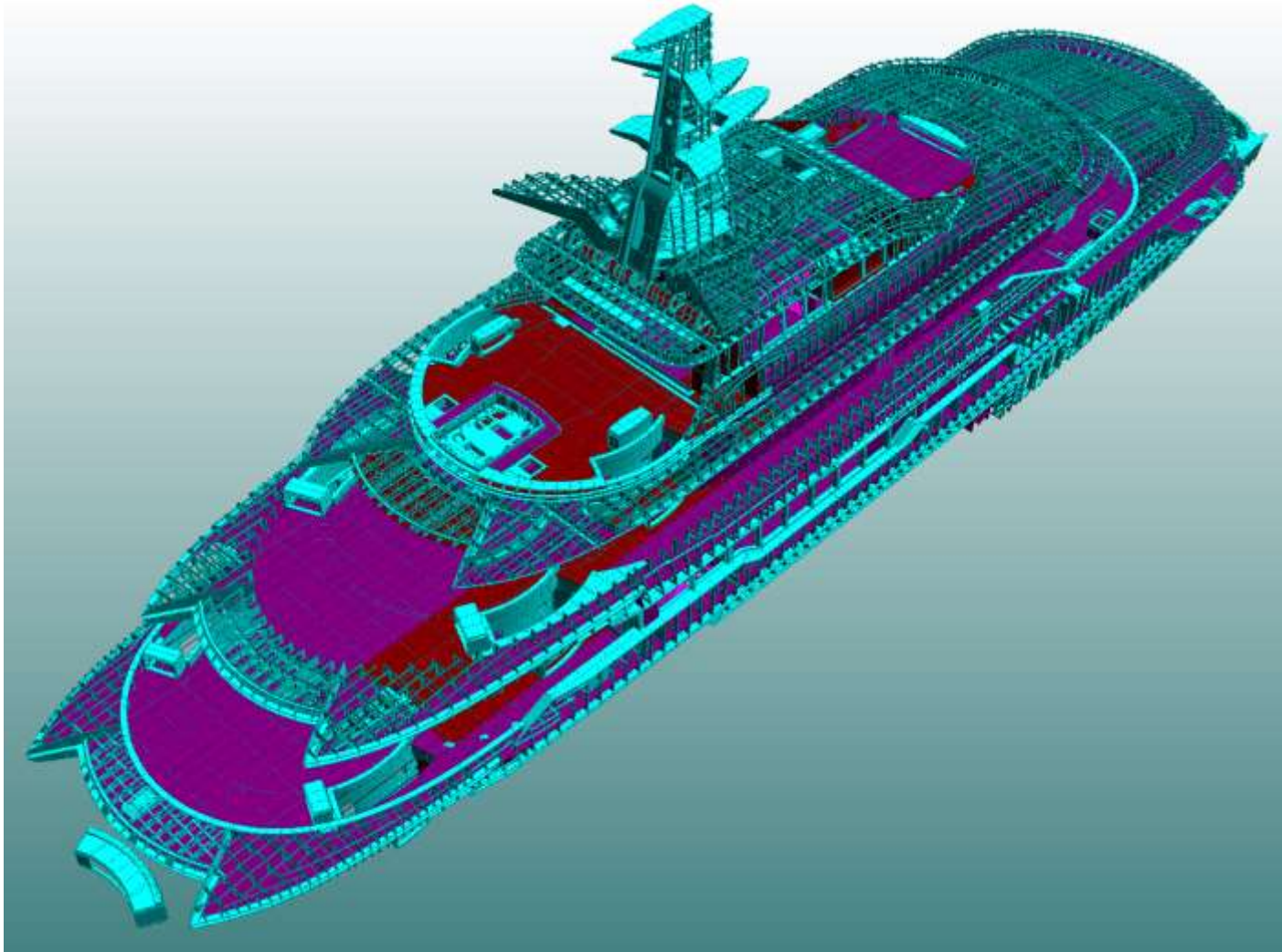




## Engineering office with 42 workstations



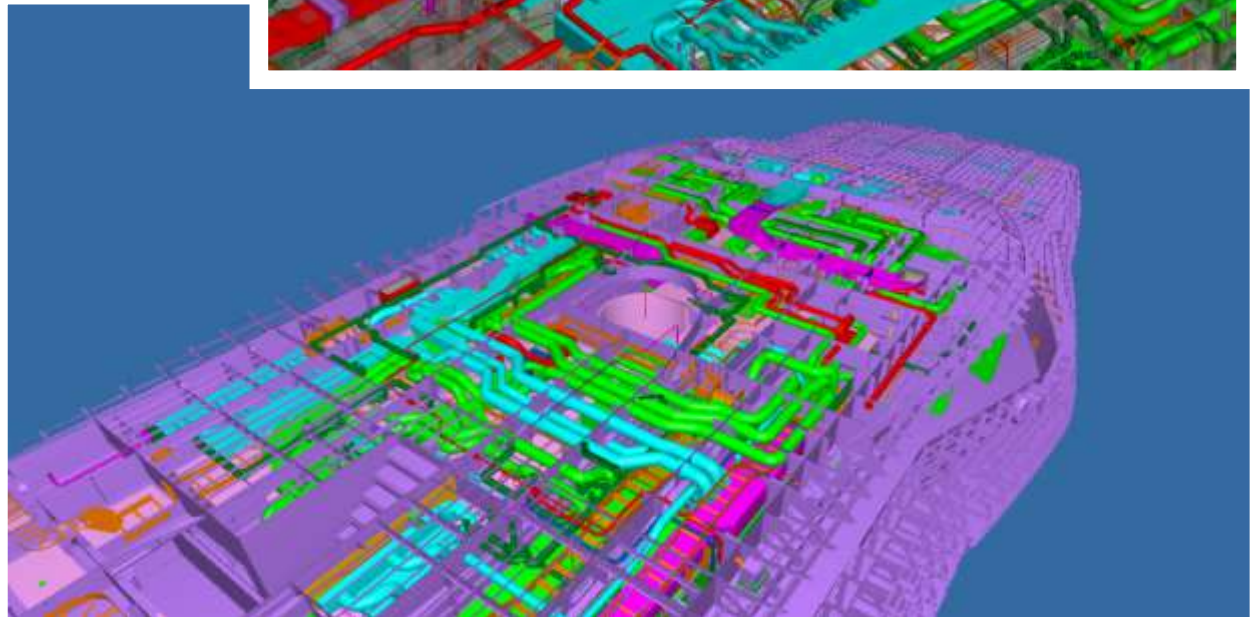
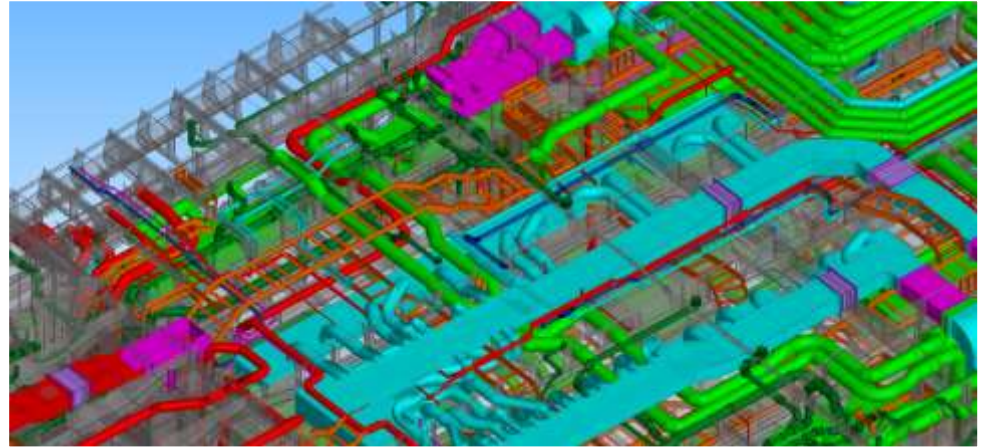
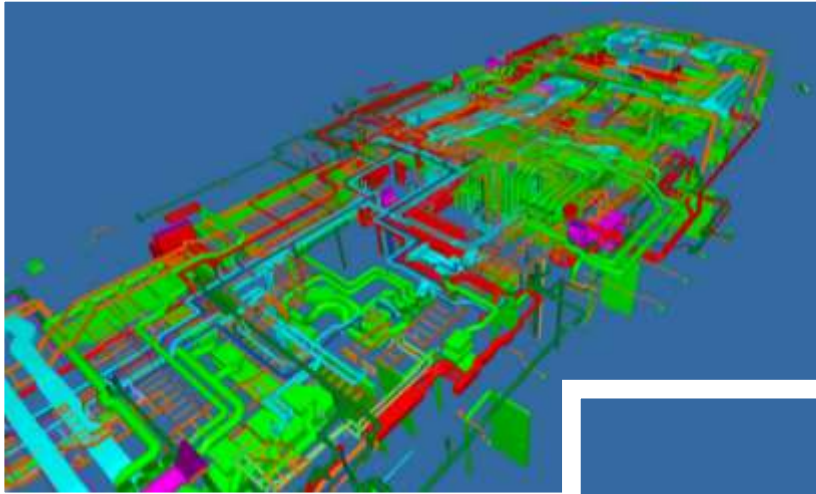
## Structural design + engineering





## Coordination + outfitting engineering

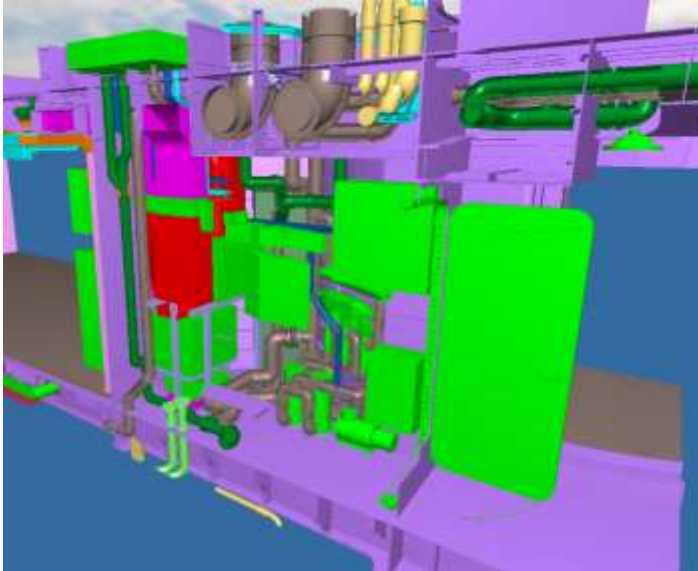
Example coordination of superstructure piping systems



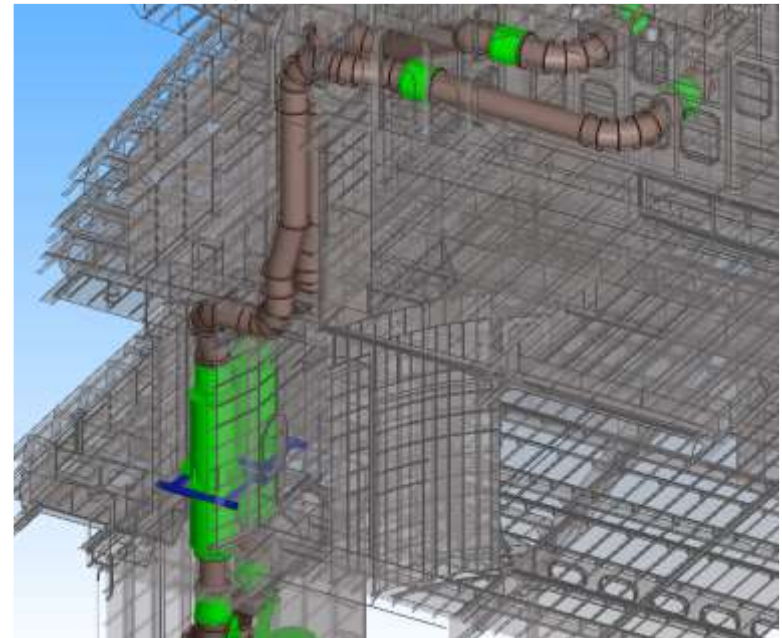


## Coordination + outfitting engineering

Example arrangement of technical space



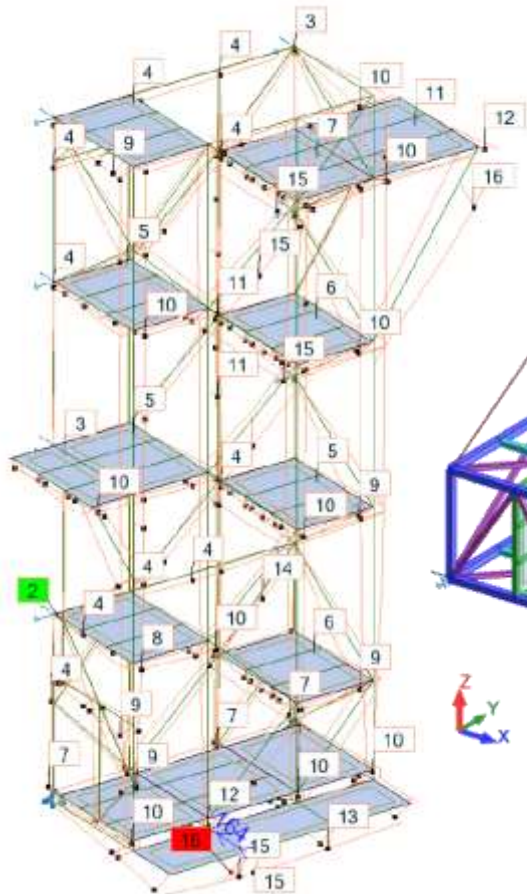
Example coordination of exhaust gas system with equipment parts



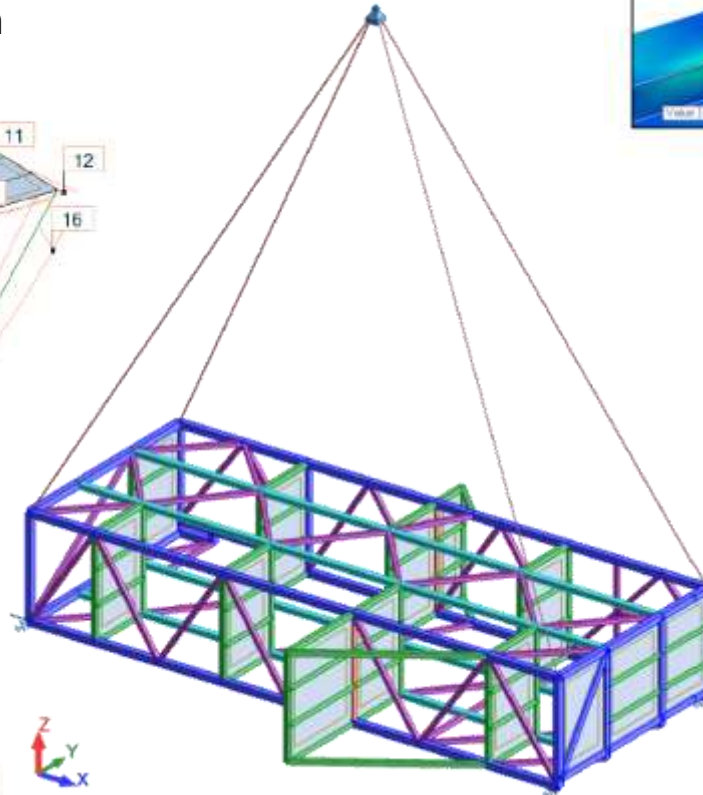
Example coordination of cable trays

## Structural Calculation & FEM Analysis

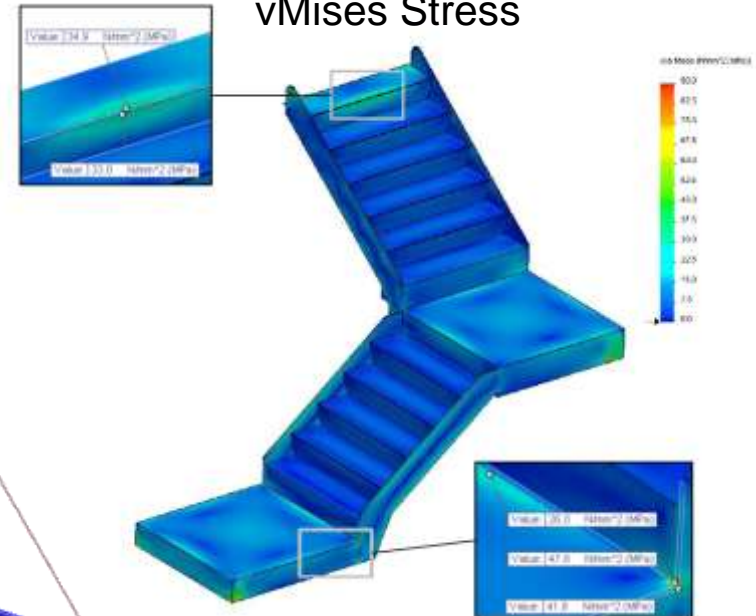
Bars deformation



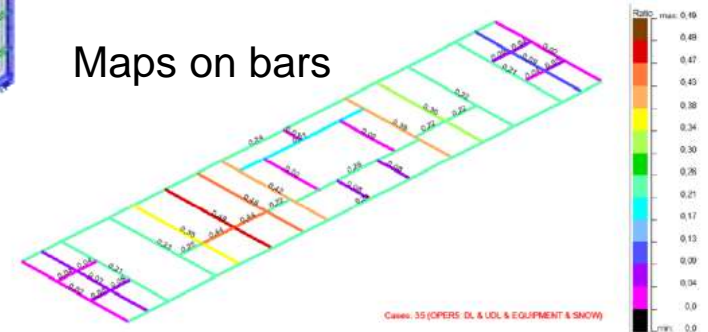
Lifting analysis



vMises Stress



Maps on bars





## Superstructures for „Aurora” (Meyer Werft)



Superstructures for „Radiance of the Seas” and sister  
(Meyer Werft)





From technical design to final  
commissioning



The superstructures for „Aida Vita” and sister ship

## Superstructures



### The scope of activities included

- complete revision and improvement of existing technical Al-design projects,
- complete classification process,
- consulting our client for special equipment and devices for aluminium superstructures,
- developing specific trapezoid panel with extrusion tool,
- class - construction - workshop drawings,
- lofting, nesting, plasma cutting docs,
- plasma cutting and marking,
- complete mounting and welding of all sections,
- complete mounting of ready blocks on steel hull at our clients premises,
- complete drawings and construction of outfitting parts including windscreens, foundations for lifts and other equipment,



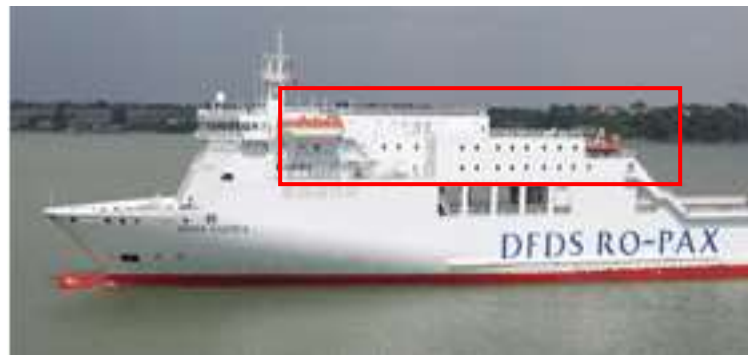
The superstructures for „Aida Vita“ and sister ship



## Redesign of superstructure into aluminium

### **Aluship Technology delivered full service package consisting of:**

- complete conversion of steel construction into specific aluminium panel design achieving up to 64% of weight reduction,
- FE-AI calculation,
- complete classification process with ABS / RINA and approval of drawings,
- consulting our client for special equipment and devices for aluminium superstructures,
- CAD/CAM, lofting, nesting, plasma cutting documents,
- plasma-cutting,
- complete mounting/welding of all sections,
- complete mounting/welding of pins for insulation, piping, cabling,
- complete mounting of ready sections on steel hull at our client's premises



Aluship design = 64% weight saving !



## High-tensile steel superstructure for “Pride of America”

Large project of building and mounting of abt 1.100 tons of thin (5-7mm) plate high tensile steel superstructures for Lloyd Werft, Bremerhaven.



16 delivered blocks of steel superstructures were mounted on the vessel in Germany by 90 workers, masters, production manager and naval architects.

Our staff also performed a lot of additional outfitting and changings executed in parallel during mounting.



## High-tensile steel blocks for “Pride of America”



## 80m battery powered "Ampere I"





## 80m battery powered "Ampere I"



## Ferry sections for Aker





## Conversion of RCCL passenger vessel





## Conversion of RCCL passenger vessel





## Conversion of RCCL passenger vessel



## Conversion of RCCL passenger vessel





## Conversion of RCCL passenger vessel



## Conversion of RCCL passenger vessel





## Conversion of Minerva passenger vessel



## Conversion of upper aluminium and steel decks



Photo of the "Braemar" by dibbes



## „Anastasia“ 85m steel hull with Al-superstructure



## Structural repair of „Gotlandia II” within 25 days



Foto: Maja Suslin / Scanpix



## Special filtration unit



Worldwide service for construction and mounting



Grand Bahama Shipyard



Our team is permanently trained acc. HSE rules



## Highly developed QAM+QC system

### Measuring equipment

Total Station 3D



Levelers



Laser Range finders



Roughness testers



Thickness testers



Hygro & Thermometers



Steel tapes, welding gouges, Calipers, etc.



## Certificates



Lloyd's Register ISO 9001

ISO 45001      ISO 14001



Certified by all major IACS.



EN 1090-1,2,3      ISO 3834-2



and others...

# Thank you

Thank you for the time,

We sincerely hope this presentation has helped to find out who we are and what we can do for you.

Please do not hesitate to contact us.

Looking forward to hearing from you

Kind regards

*Götz Linzenmeier*  
Chairman / Founder

Telephones  
Fax  
Email:  
Website:

+48 58 506 68 68  
+48 58 506 68 69  
[contact@aluship.com](mailto:contact@aluship.com)  
[www.aluship.com](http://www.aluship.com)