



ENGINEERING & MANUFACTURING

Aluminium+Steel+Stainless+(Super)Duplex

Secondary structures Relings Ladders Gates

Foundations Walkways Ventducts



Certificates



Lloyd's Register ISO 9001

ISO 45001 ISO 14001



Certified by all major IACS.

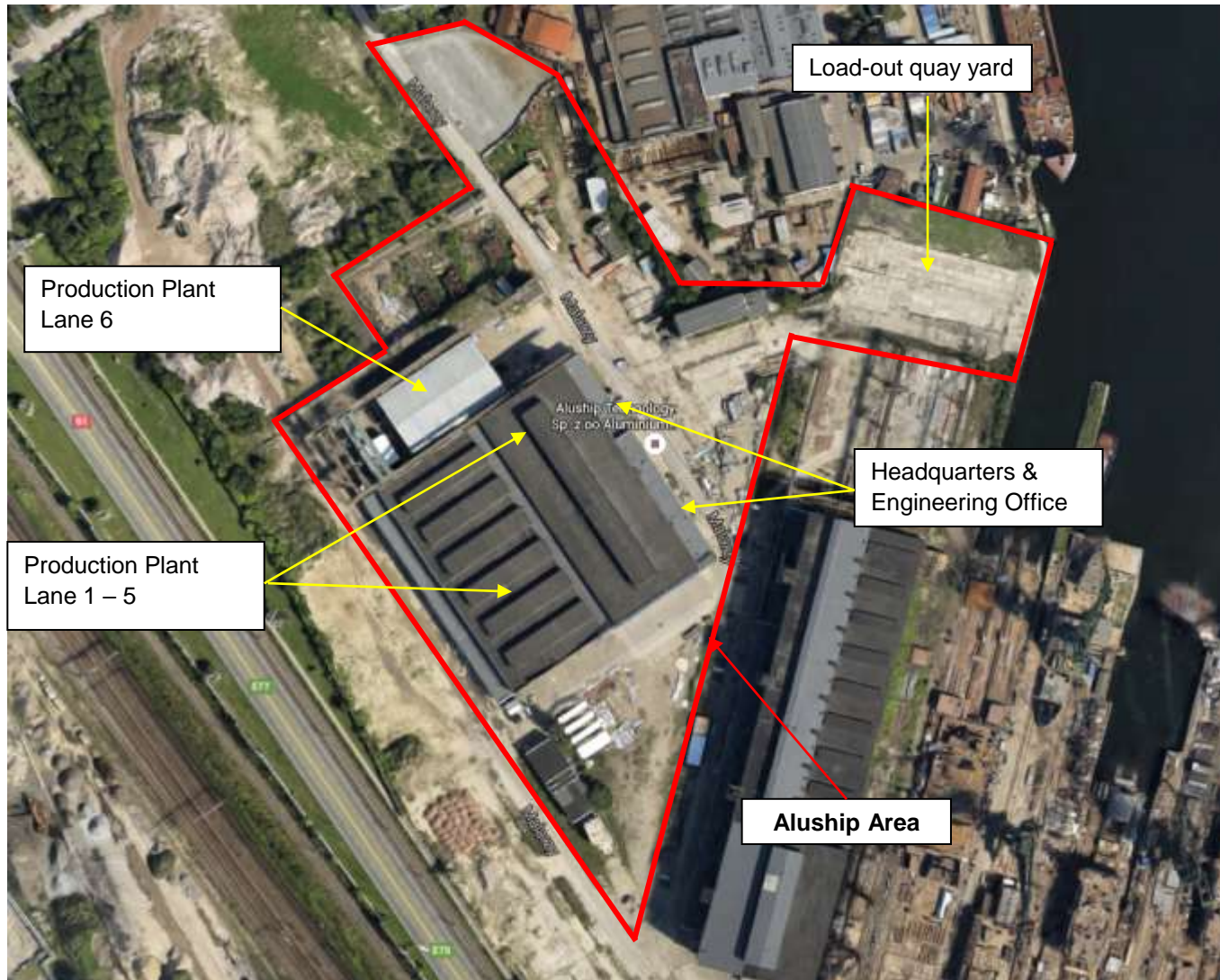


EN 1090-1,2,3 ISO 3834-2



and others...

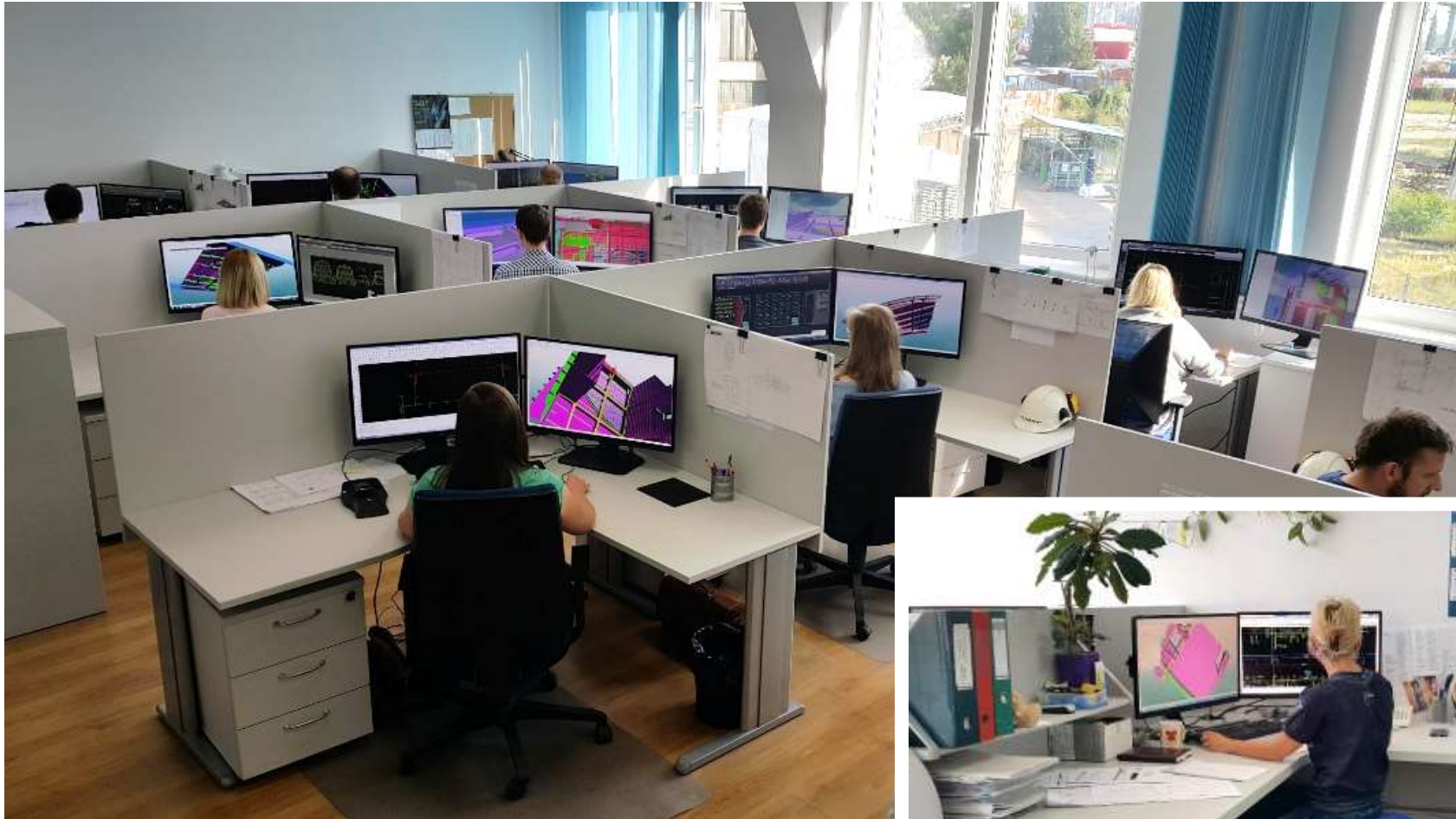
Aluship Technology has its own 4.5ha area in Gdansk harbour



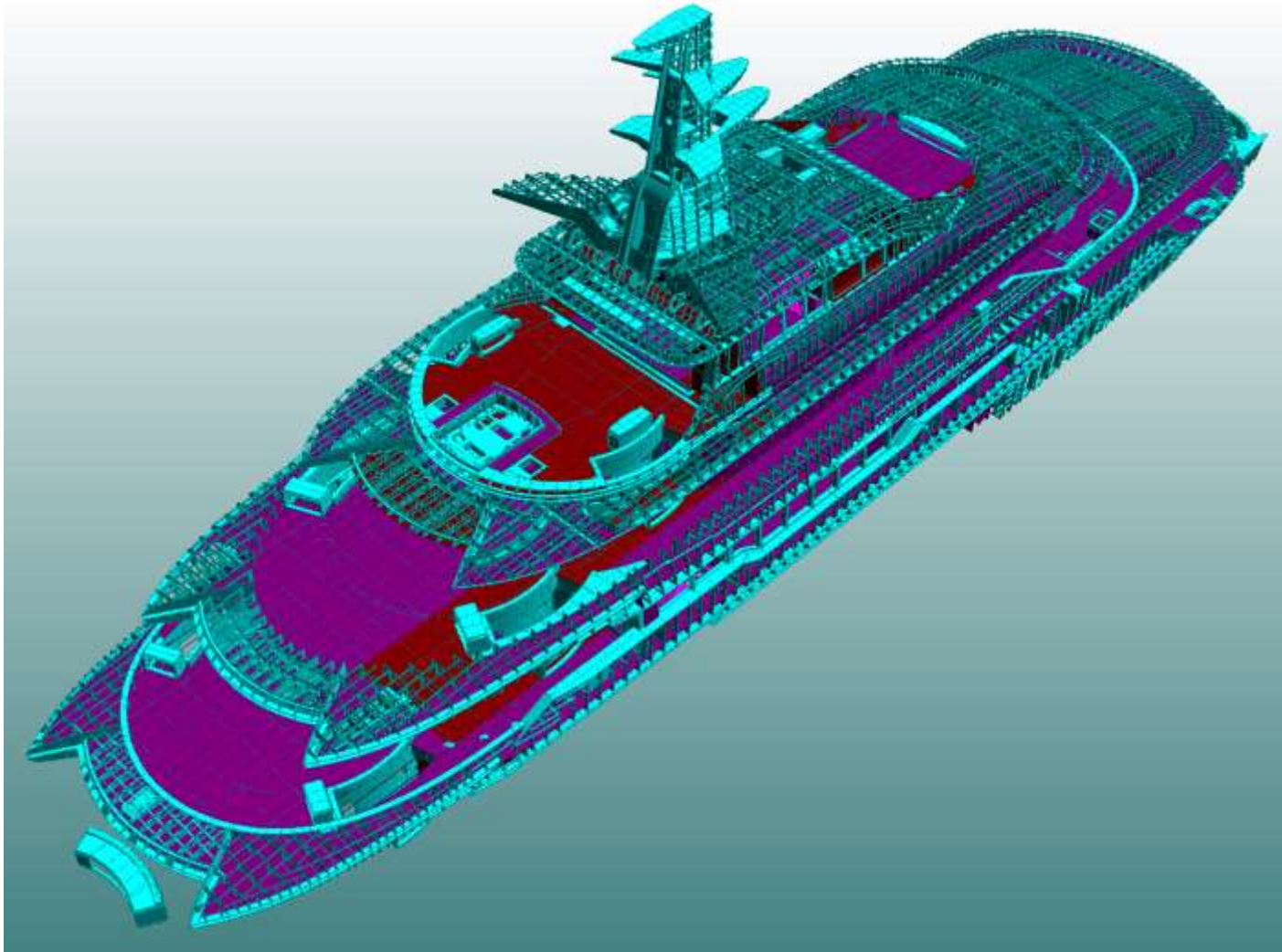
Production facilities in Gdansk harbour



Engineering office with 42 workstations

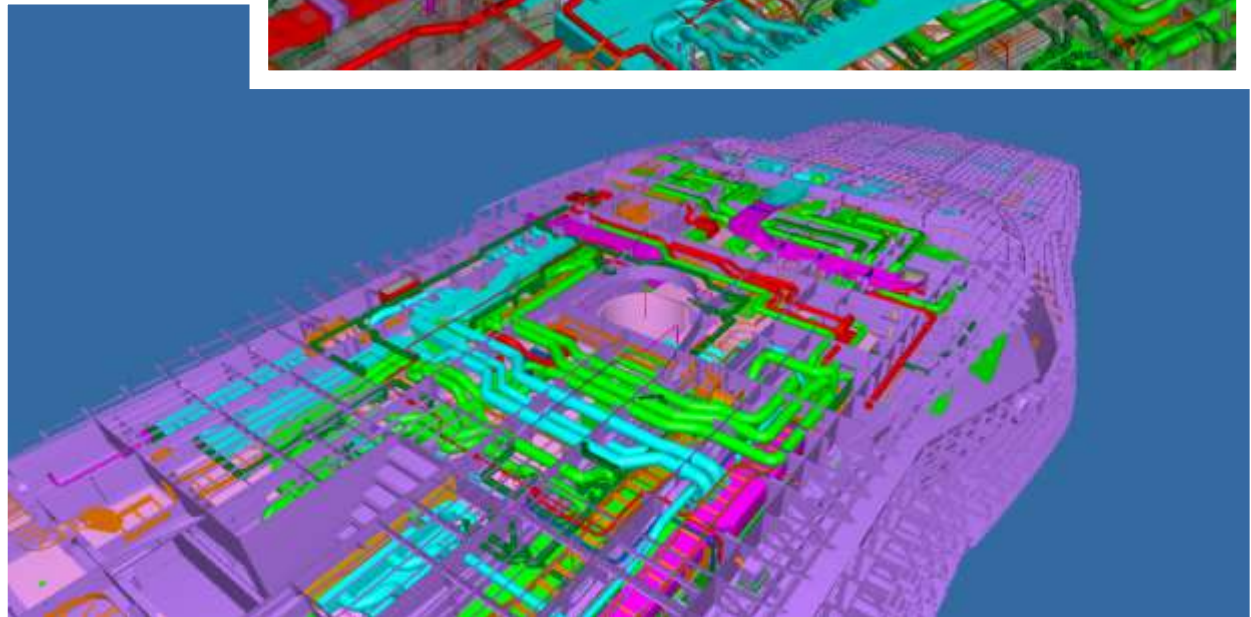
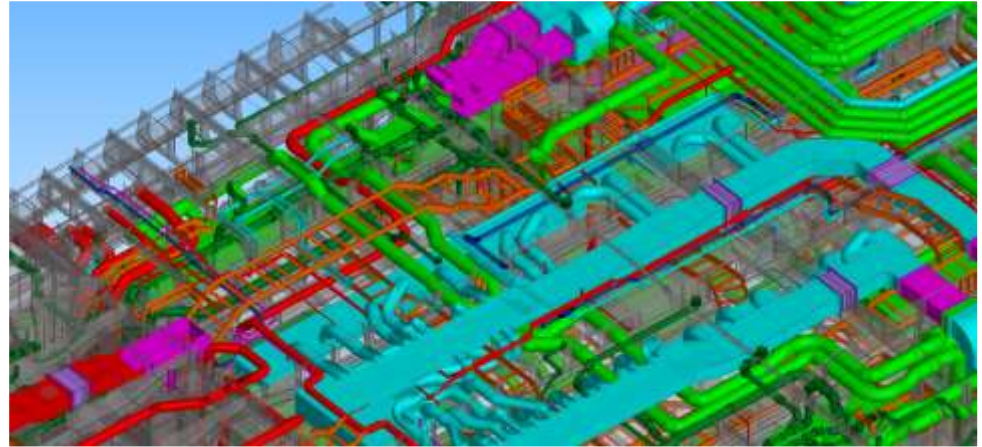
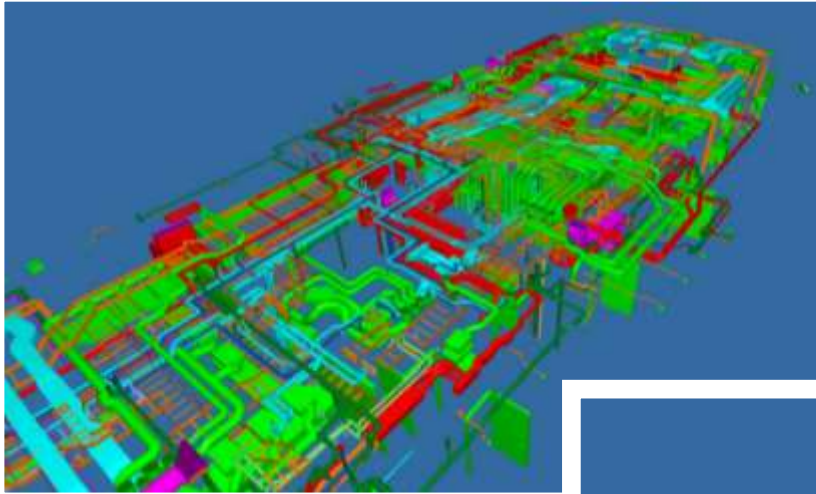


Structural design + engineering



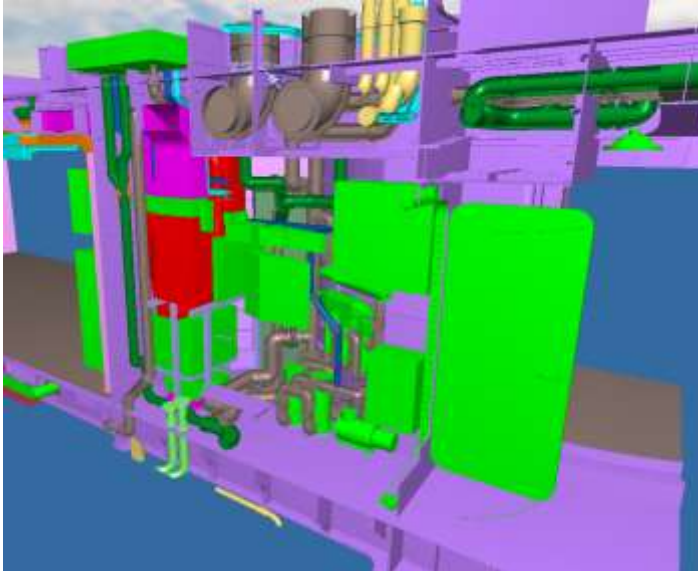
Coordination + outfitting engineering

Example coordination of superstructure piping systems

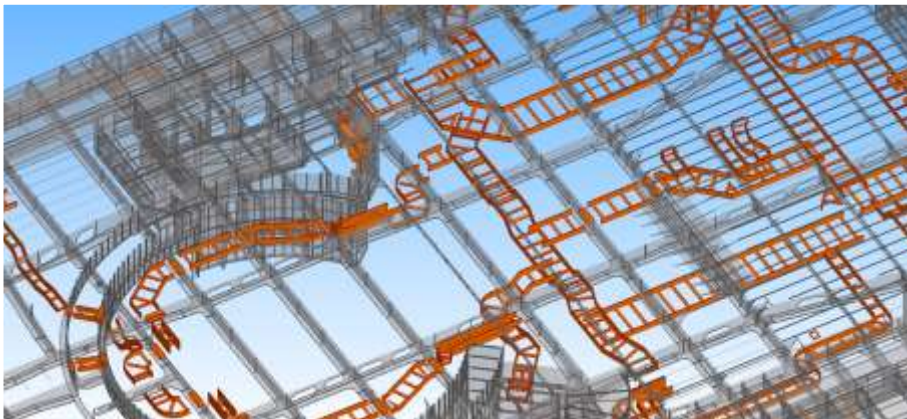
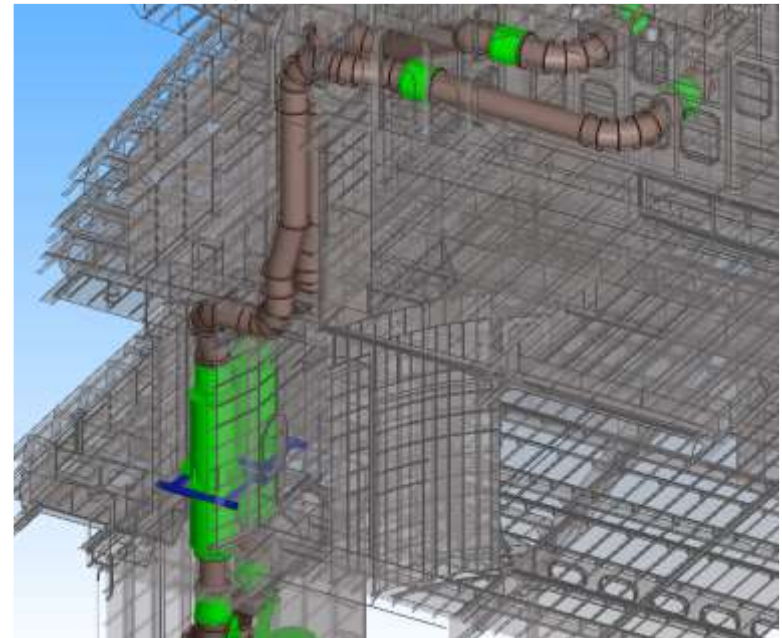


Coordination + outfitting engineering

Example arrangement of technical space



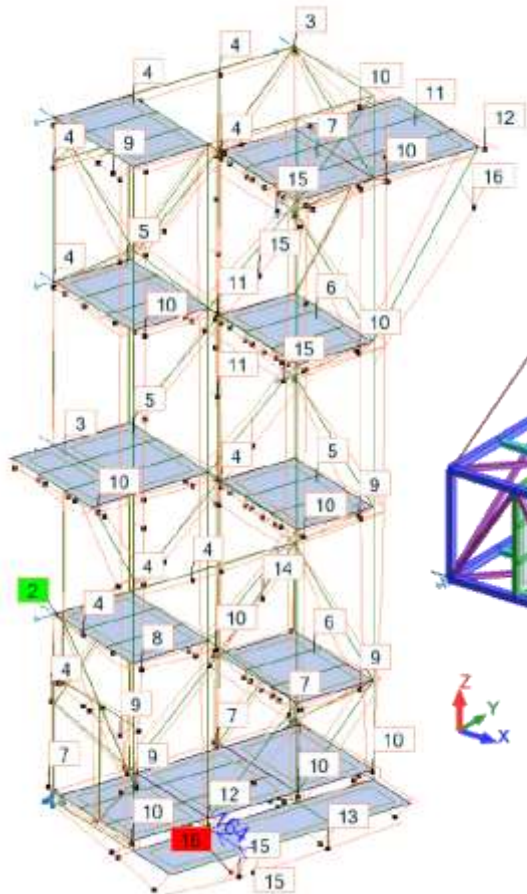
Example coordination of exhaust gas system with equipment parts



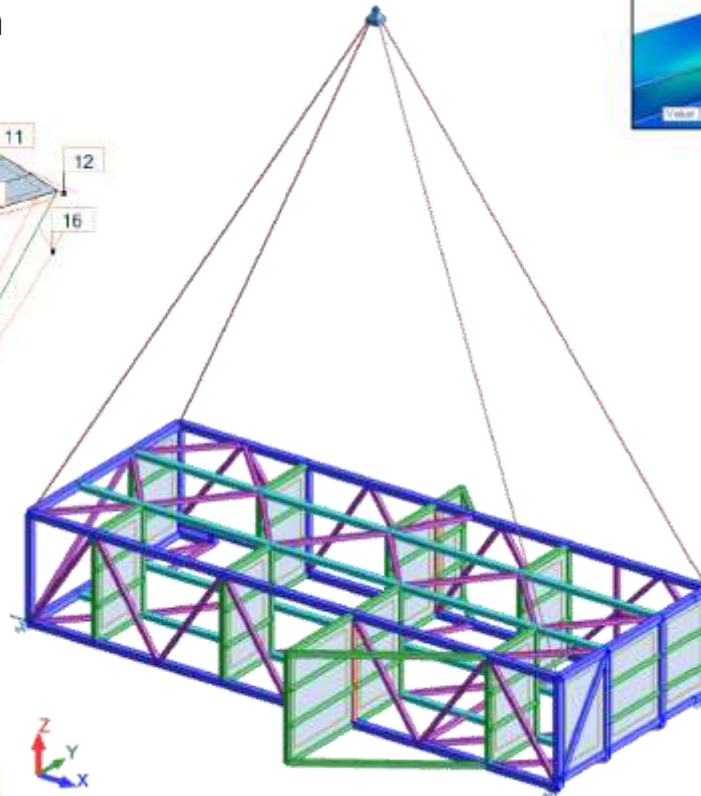
Example coordination of cable trays

Structural Calculation & FEM Analysis

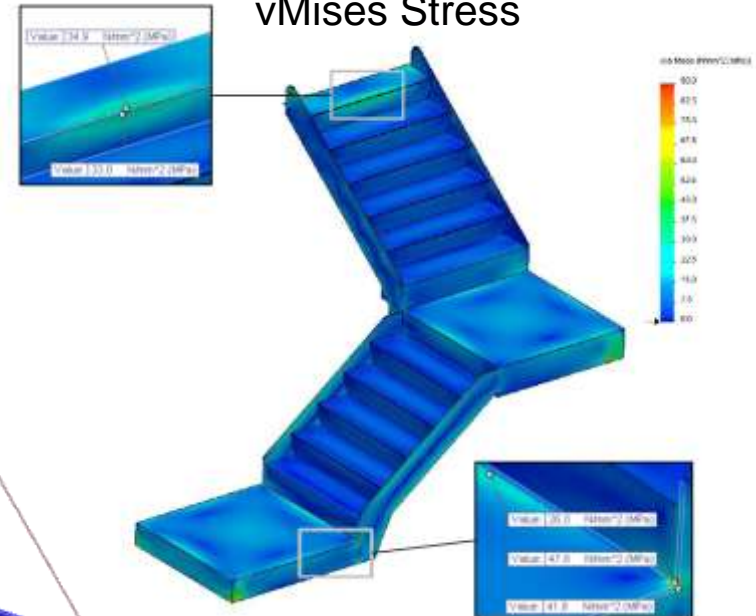
Bars deformation



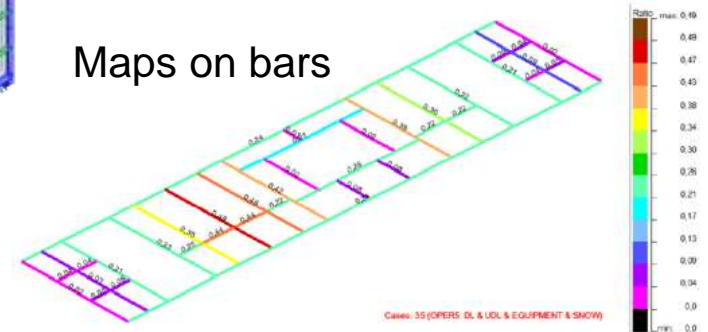
Lifting analysis



vMises Stress



Maps on bars



Production facilities



12 mtr one-side welding gantries
for aluminium and steel

“Gina Krog”: Living quarter



“Gina Krog”: Detailed structural and pre-outfitting engineering and...



“Gina Krog”: ...structural fabrication and pre-outfitting



80m battery powered "Ampere I"



80m battery powered "Ampere I"



Offshore windenergy rigging platforms

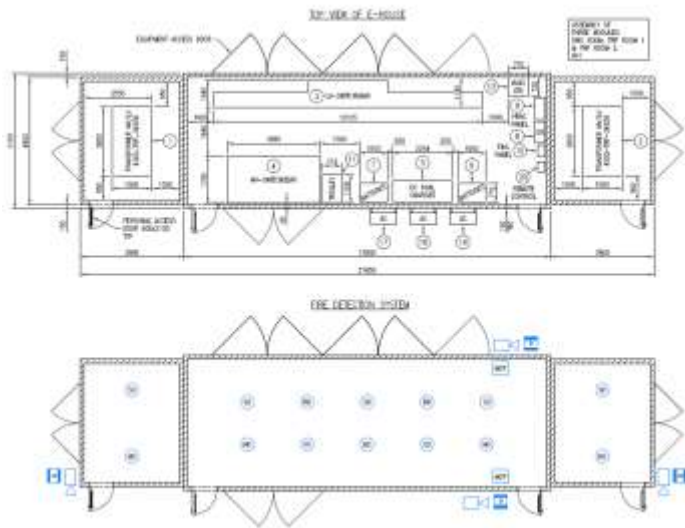


Offshore platforms in high tensile steel



Engineering and manufacturing of E-houses and accommodation units

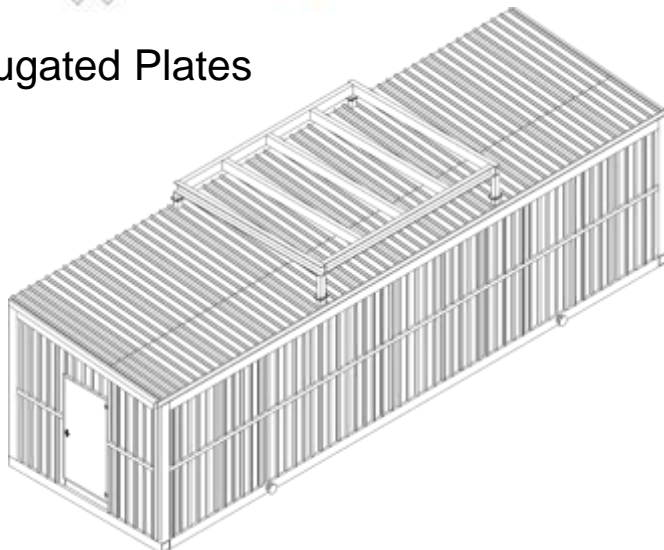
General Arrangement



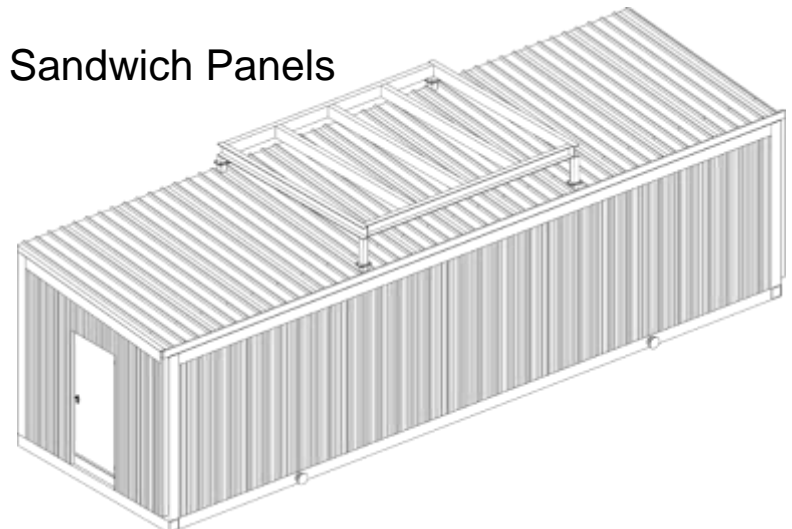
Structure Frame



Corrugated Plates



Sandwich Panels



Generator enclosure



Offshore container



Air intake



Compressor enclosure



Offshore ventilation system



Open stairtower



Stairhouses for Offshore platforms from basic engineering to final commissioning



Stairs and walkways



Offshore constructions



Offshore ventilation ducts



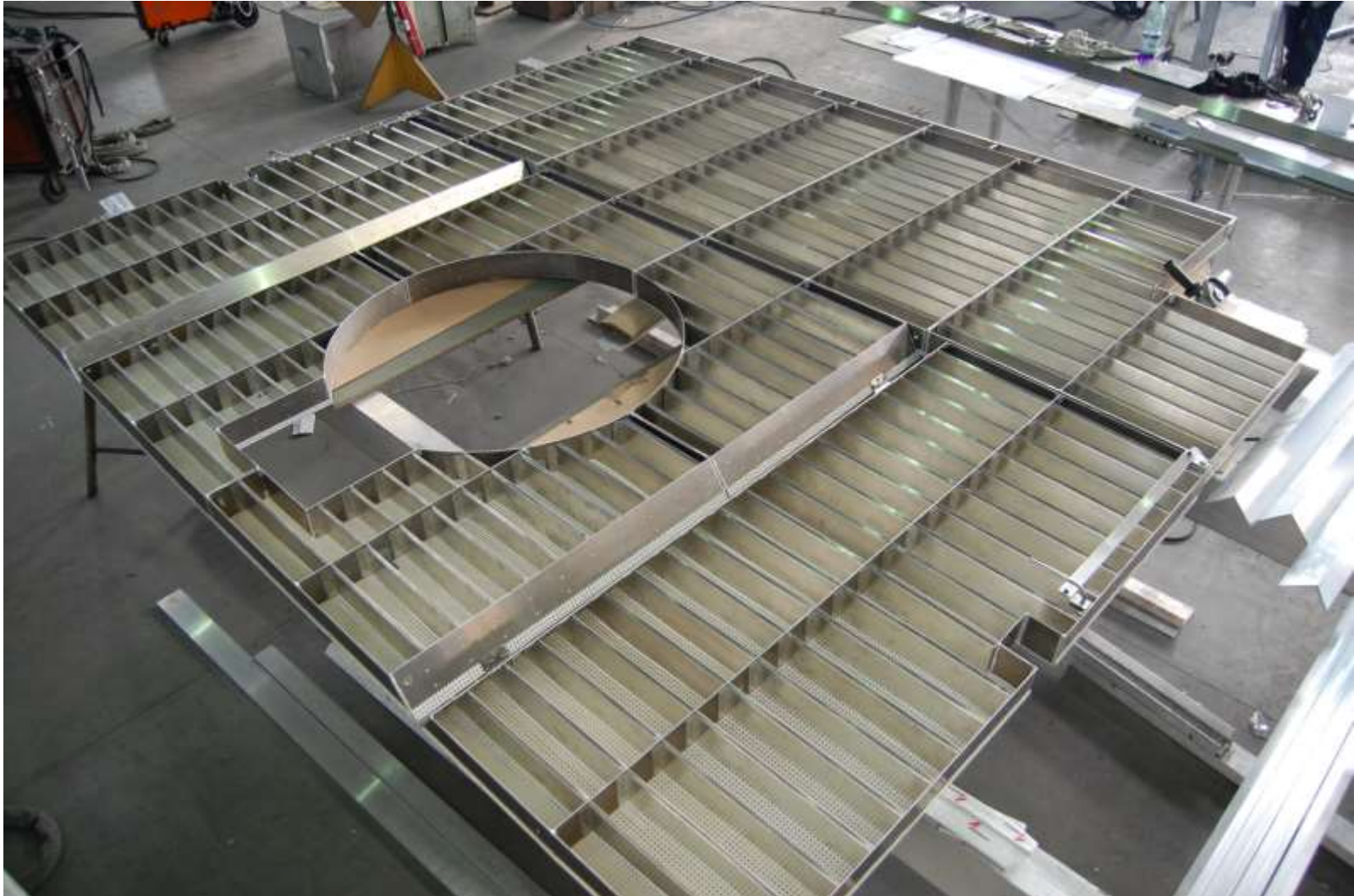
Offshore ventilation ducts



Offshore ventilation ducts



ATEX – Explosion proof wall



Compressor enclosure's skirt and junction box



Anti-icing module for ventilation system



Inside of Anti-icing module



Offshore zinced steel relings



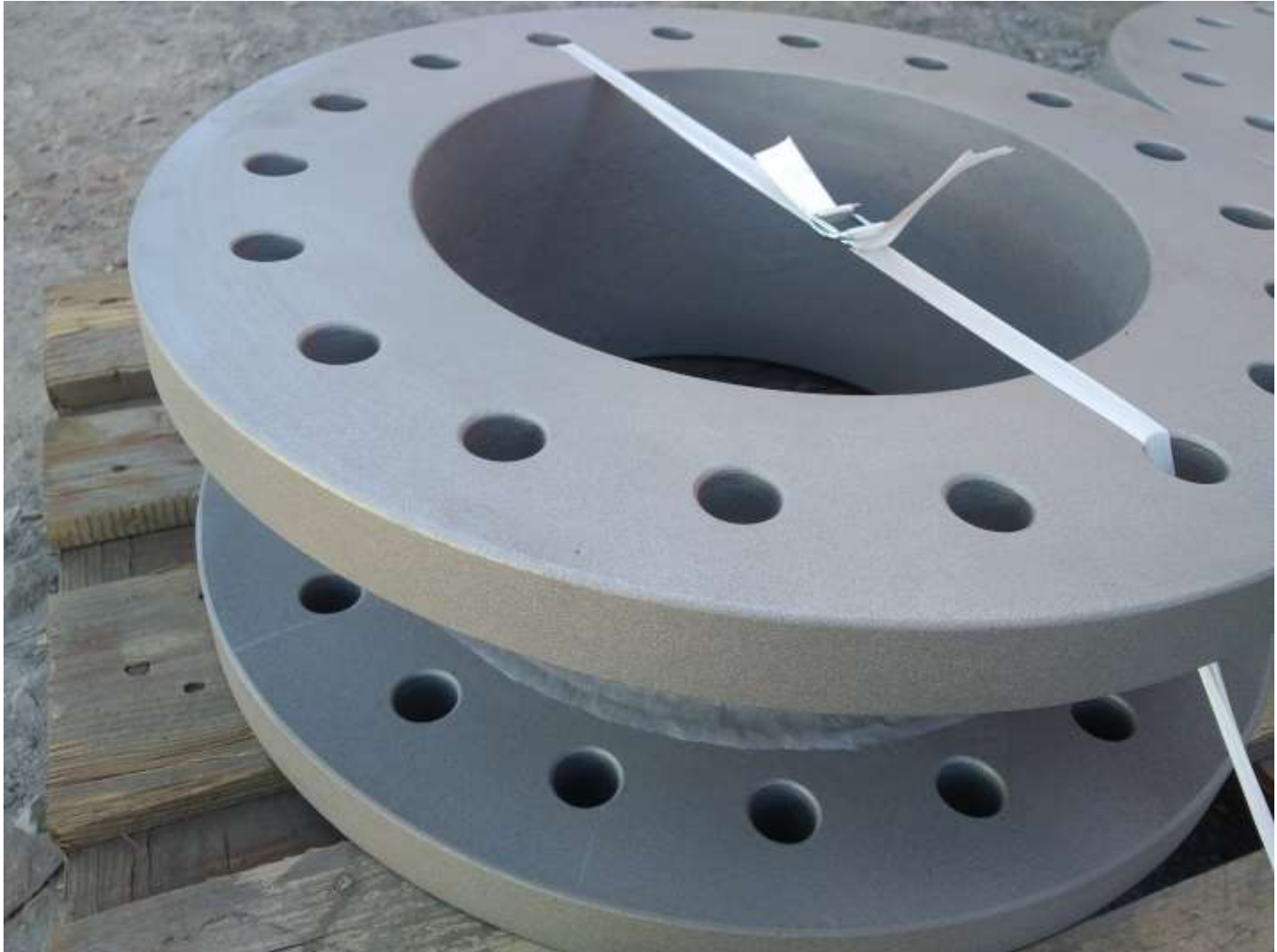
Aluminium gates and relings



Offshore aluminium relings and gates



Offshore davit steel foundation after blasting



Steel ladder with Duplex elements



Offshore davit steel foundation after welding and machining



Offshore relings with stainless and (super) duplex elements



Offshore reling detail after blasting



Inlet transition upper for ventilation system



Air intake



Air intake



Air intake



Plant Rooms



Mechanical Enclosure



Compressor enclosure





Worldwide service for construction and mounting



Grand Bahama Shipyard

Steel block with Outfitting for Offshore Supply Vessels (OSV)



Steel and aluminium constructions



Our team is permanently trained acc. HSE rules.



Highly developed QAM+QC system

Measuring equipment

Total Station 3D



Levelers



Laser Range finders



Roughness testers



Thickness testers

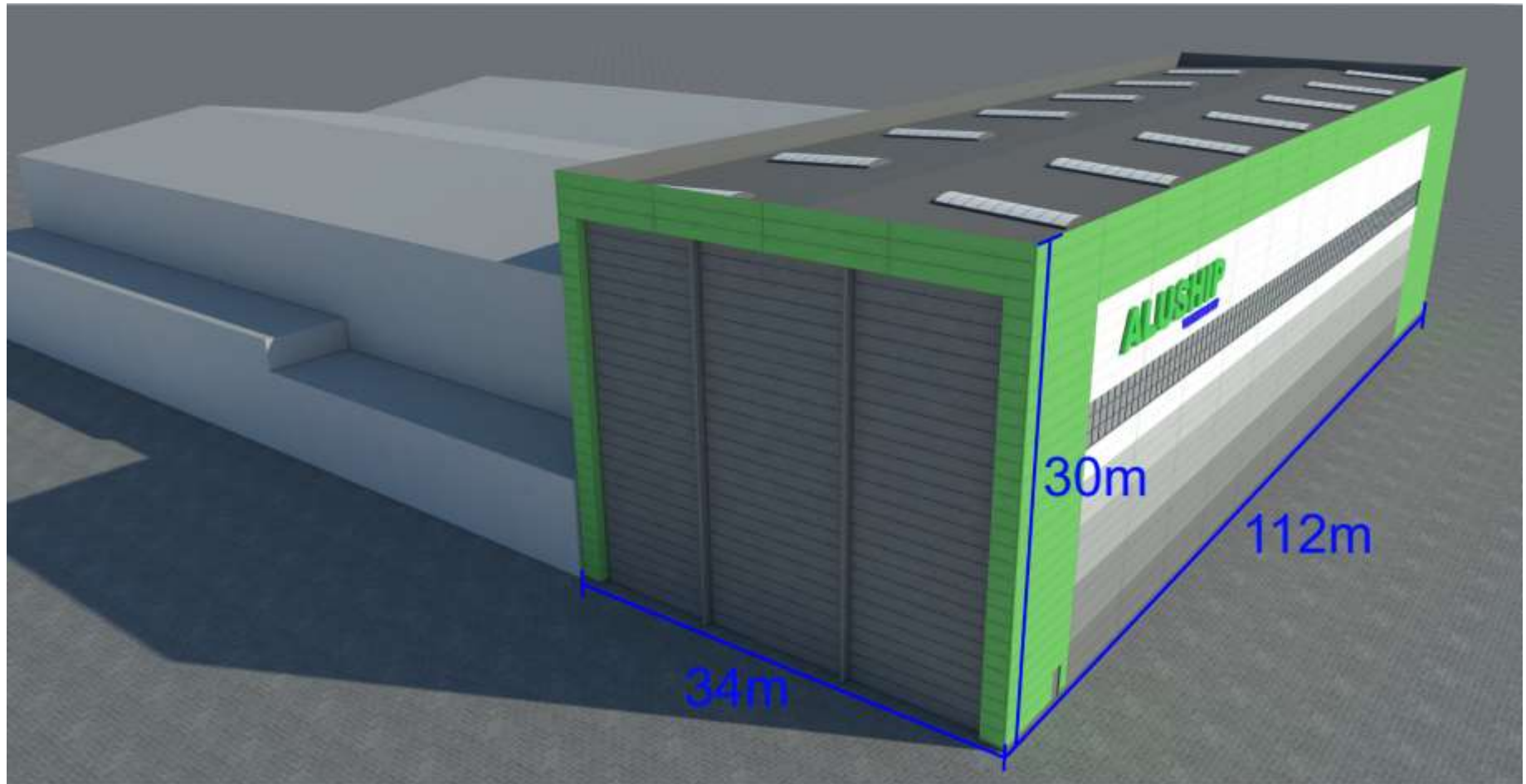


Hygro & Thermometers



Steel tapes, welding gouges, Calipers, etc.

Investment plan for new hall of 3745m² floor space



Thank you

Thank you for the time,

We sincerely hope this presentation has helped to find out who we are and what we can do for you.

Please do not hesitate to contact us.

Looking forward to hearing from you

Kind regards

Götz Linzenmeier
Chairman / Founder

Telephones
Fax
Email:
Website:

+48 58 506 68 68
+48 58 506 68 69
contact@aluship.com
www.aluship.com