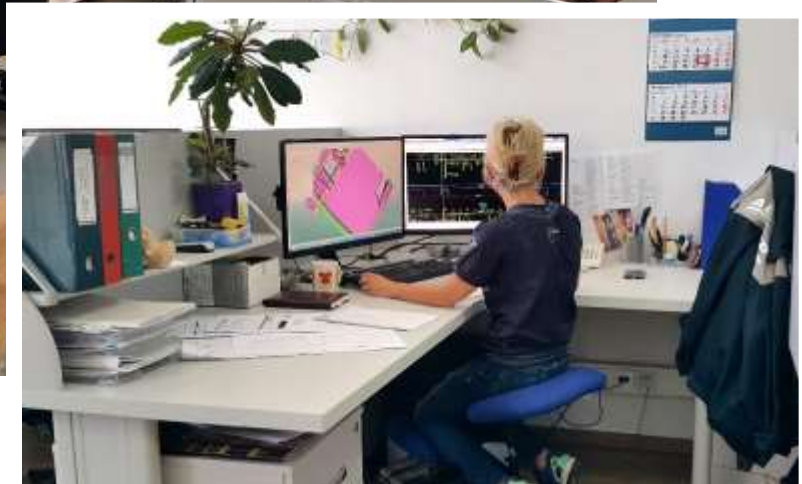
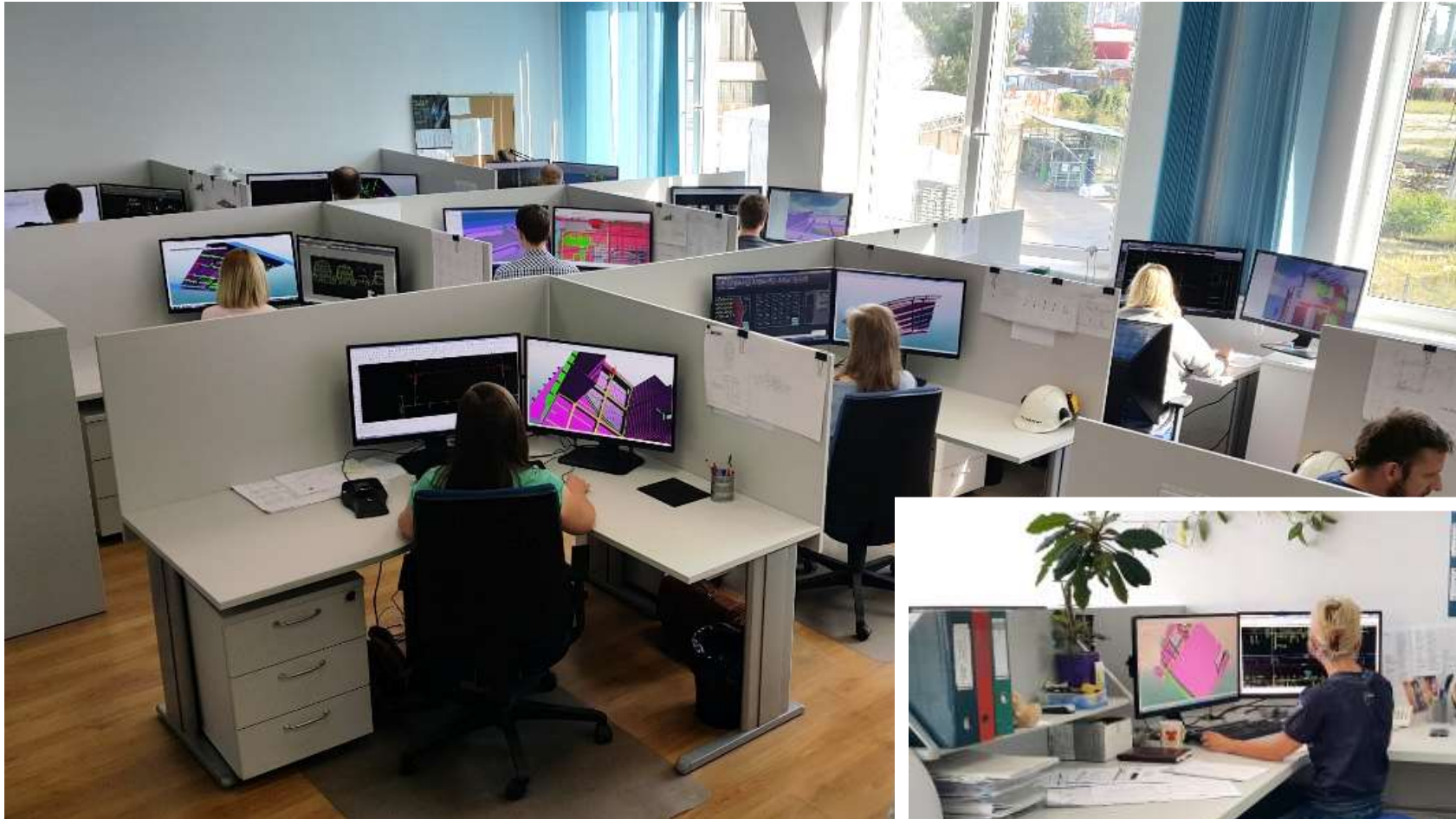




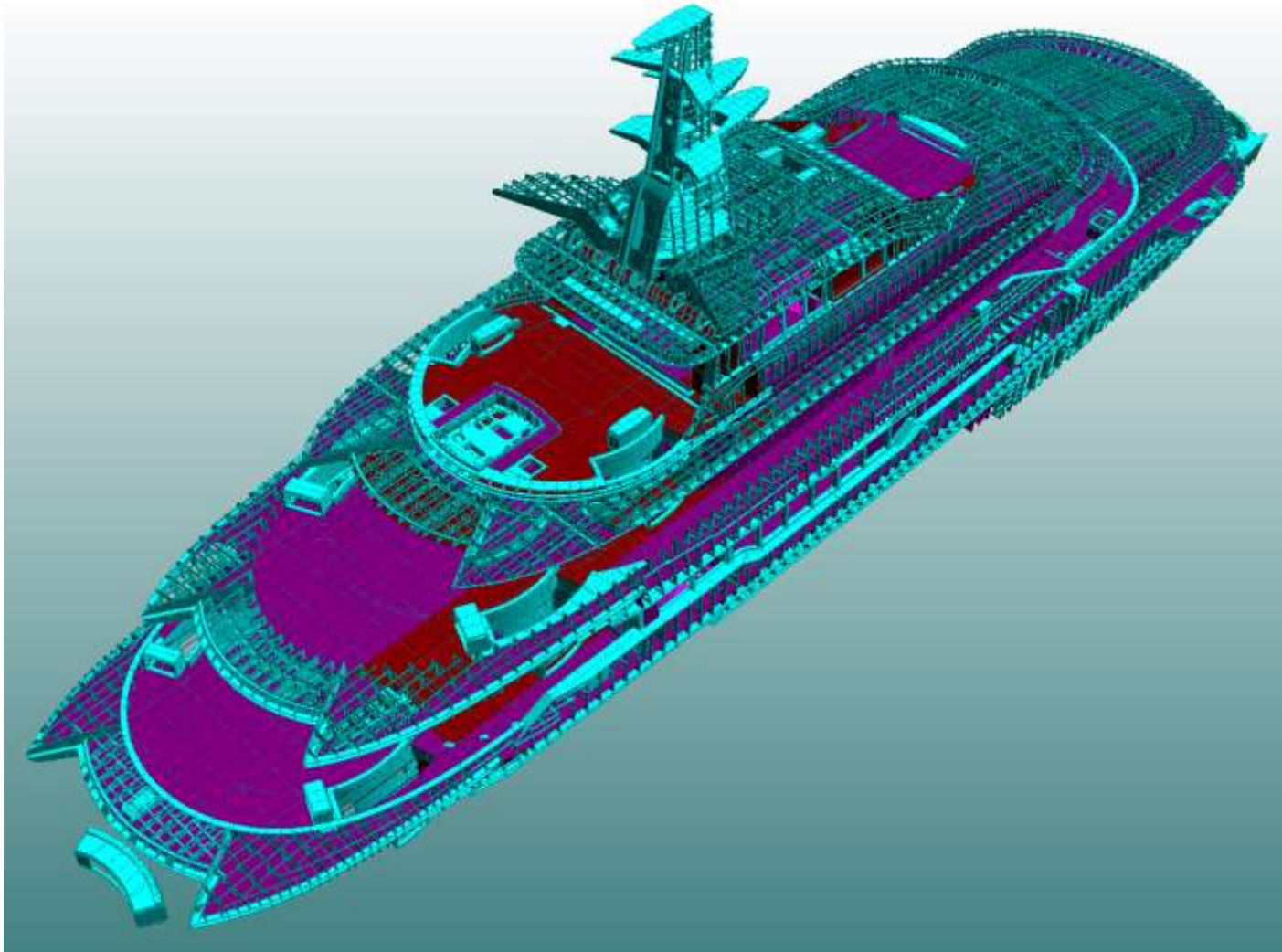
ENGINEERING + CONSTRUCTION
FOR MEGAYACHT INDUSTRY + INDIVIDUAL CLIENTS
NEW BUILD + REPAIR + CONVERSION



Engineering office with 42 workstations

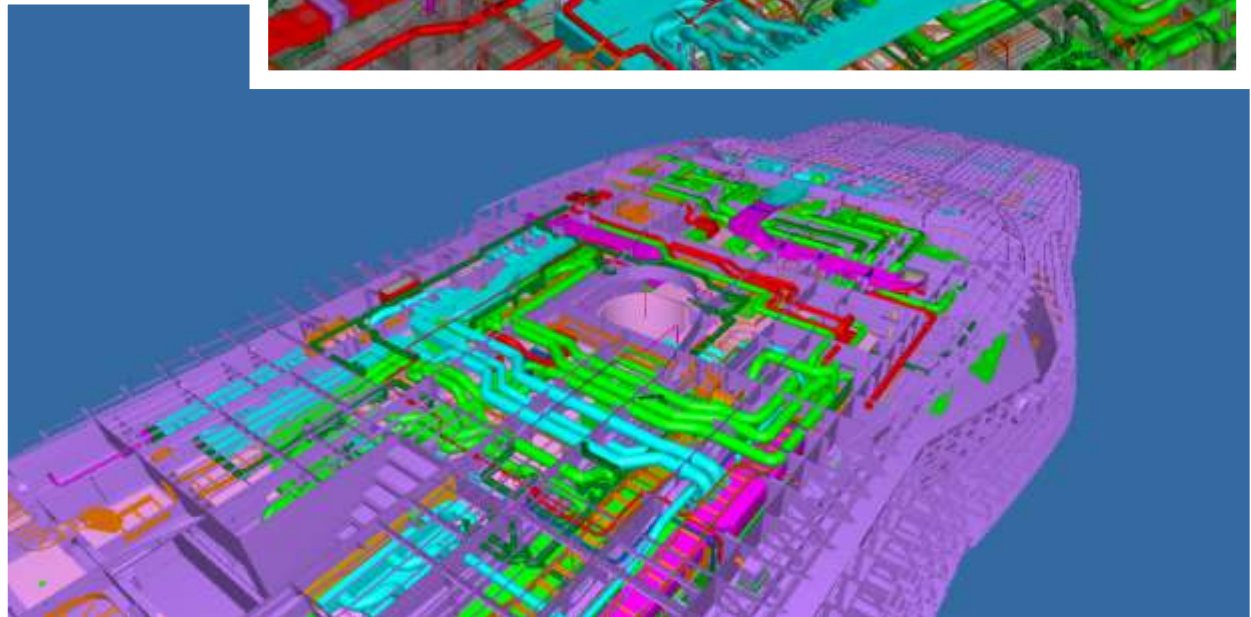
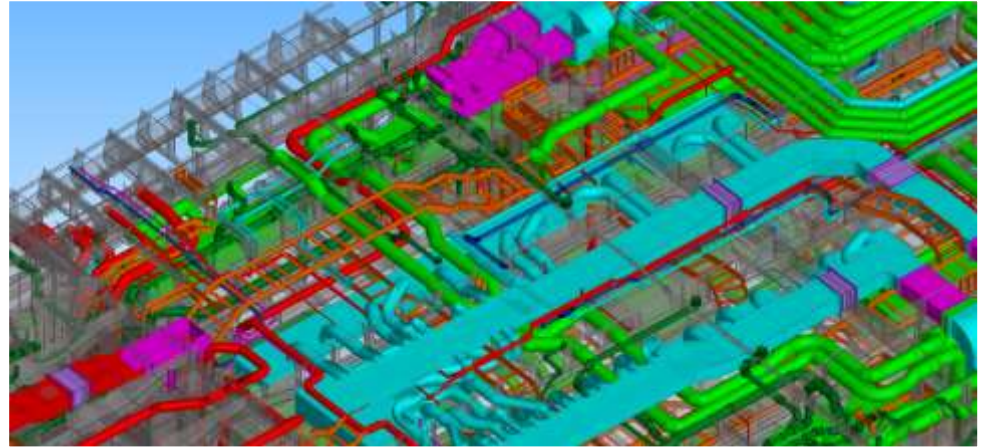
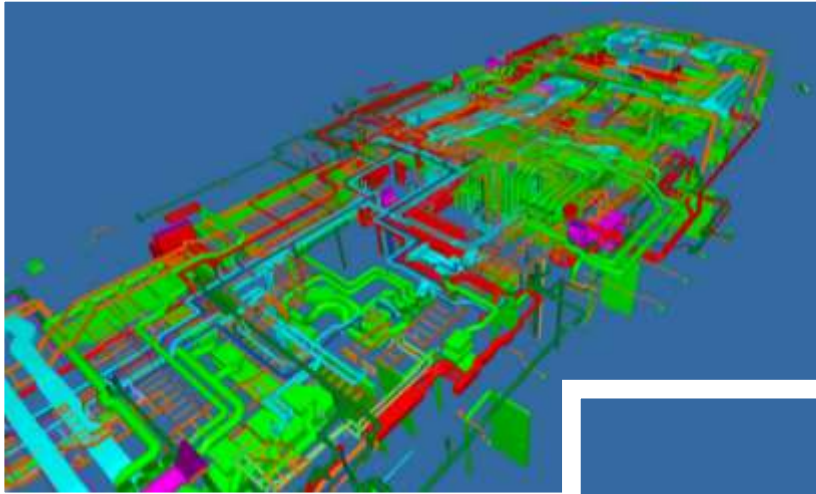


Structural design + engineering



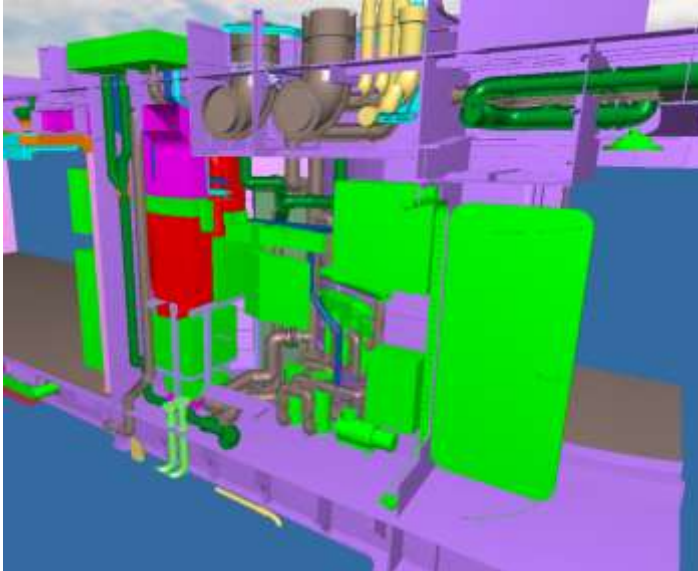
Coordination + outfitting engineering

Example coordination of superstructure piping systems

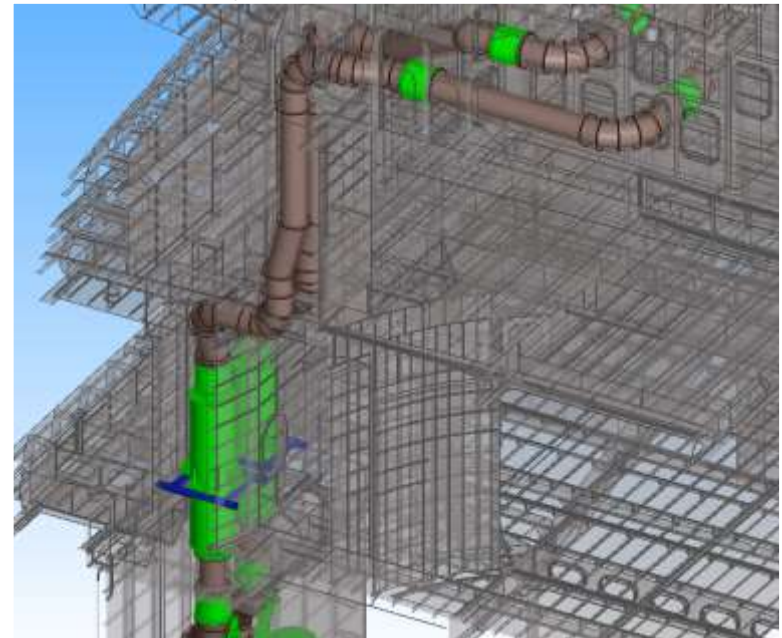


Coordination + outfitting engineering

Example arrangement of technical space



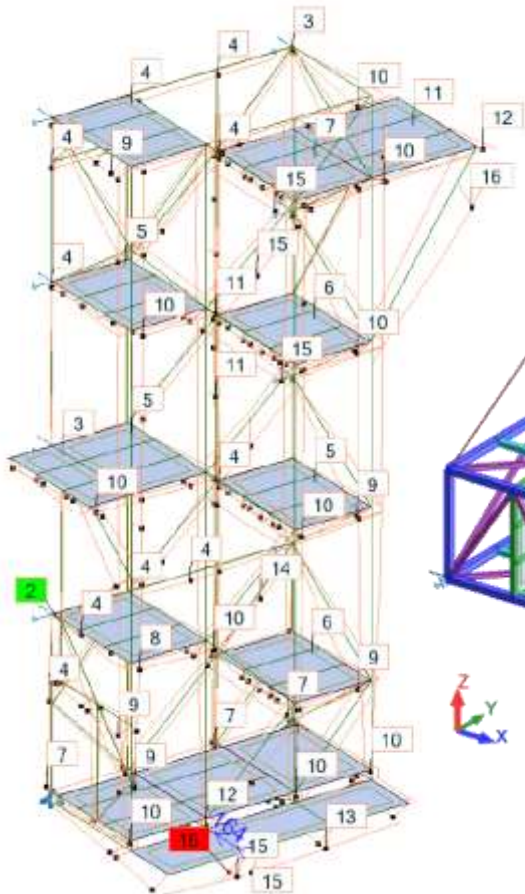
Example coordination of exhaust gas system with equipment parts



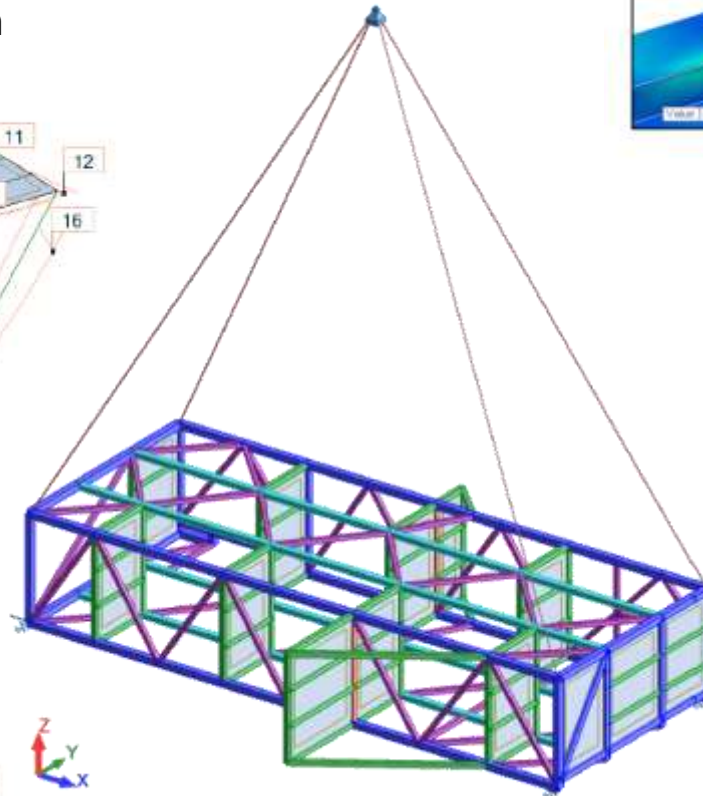
Example coordination of cable trays

Structural Calculation & FEM Analysis

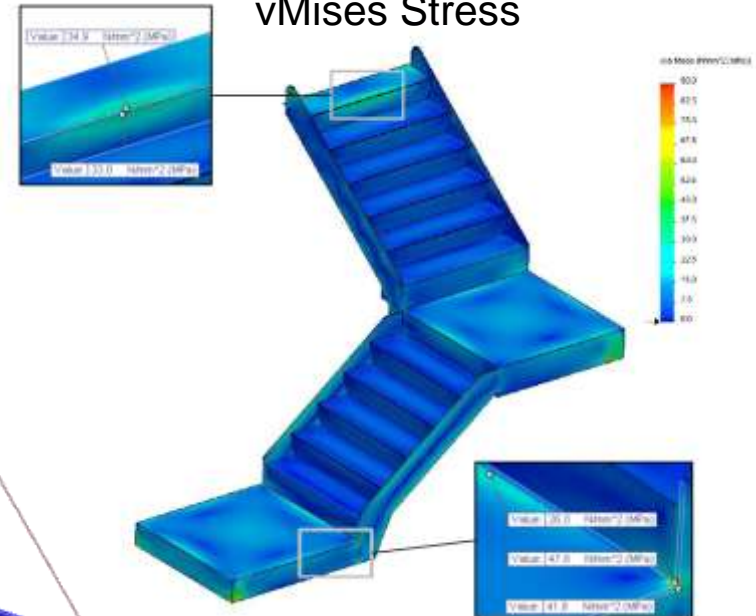
Bars deformation



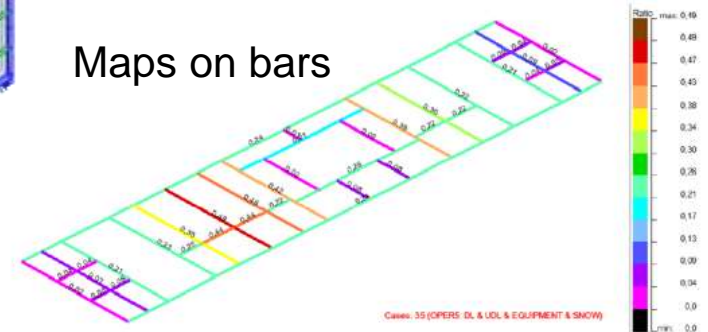
Lifting analysis



vMises Stress



Maps on bars



Aluship Explorer 79



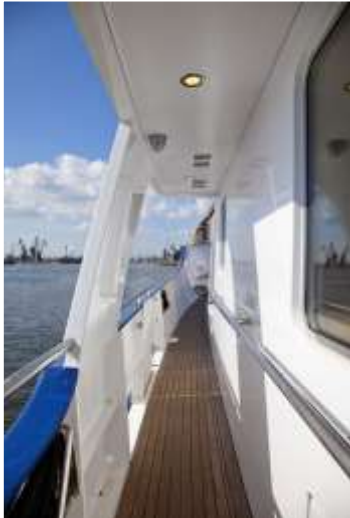
Aluship Explorer 79



Aluship Explorer 79



Aluship Explorer 79



Aluship Explorer 79



80m battery powered "Ampere I"



80m battery powered "Ampere I"



Megayacht Superstructure



Megayacht Superstructure



Megayacht Superstructure



Megayacht Superstructure



Megayacht Superstructure



Megayacht Superstructure



Megayacht Superstructure



Megayacht Superstructure



Megayacht Superstructure



Megayacht Superstructure



Megayacht Superstructure



Megayacht Superstructure



Megayacht Superstructure



Megayacht Superstructure



Superstructures for Fishing Vessels



Superstructures for fishing vessels

Funnels & Masts



44m Motoryacht



„Anastasia“ 85m steel hull with Al-superstructure



„Anastasia“ 85m steel hull with Al-superstructure



Catamaran Hulls



Change of forefront of superstructure of 80m motor yacht



Conversion of RCCL passenger vessel



From technical design to final
commissioning



The superstructures for „Aida Vita“ and sister ship

Superstructures



The scope of activities included

- complete revision and improvement of existing technical AI-design projects,
- complete classification process,
- consulting our client for special equipment and devices for aluminium superstructures,
- developing specific trapezoid panel with extrusion tool,
- class - construction - workshop drawings,
- lofting, nesting, plasma cutting docs,
- plasma cutting and marking,
- complete mounting and welding of all sections,
- complete mounting of ready blocks on steel hull at our clients premises,
- complete drawings and construction of outfitting parts including windscreens, foundations for lifts and other equipment,



The superstructures for „Aida Vita“ and sister ship

Redesign of superstructure into aluminium

Aluship Technology delivered full service package consisting of:

- complete conversion of steel construction into specific aluminium panel design achieving up to 64% of weight reduction,
- FE-AI calculation,
- complete classification process with ABS / RINA and approval of drawings,
- consulting our client for special equipment and devices for aluminium superstructures,
- CAD/CAM, lofting, nesting, plasma cutting documents,
- plasma-cutting,
- complete mounting/welding of all sections,
- complete mounting/welding of pins for insulation, piping, cabling,
- complete mounting of ready sections on steel hull at our client's premises



Aluship design = 64% weight saving !

46m SAR aluminium hull



DGzRS rescue vessel „Hermann Marwede“

Navy Superstructures



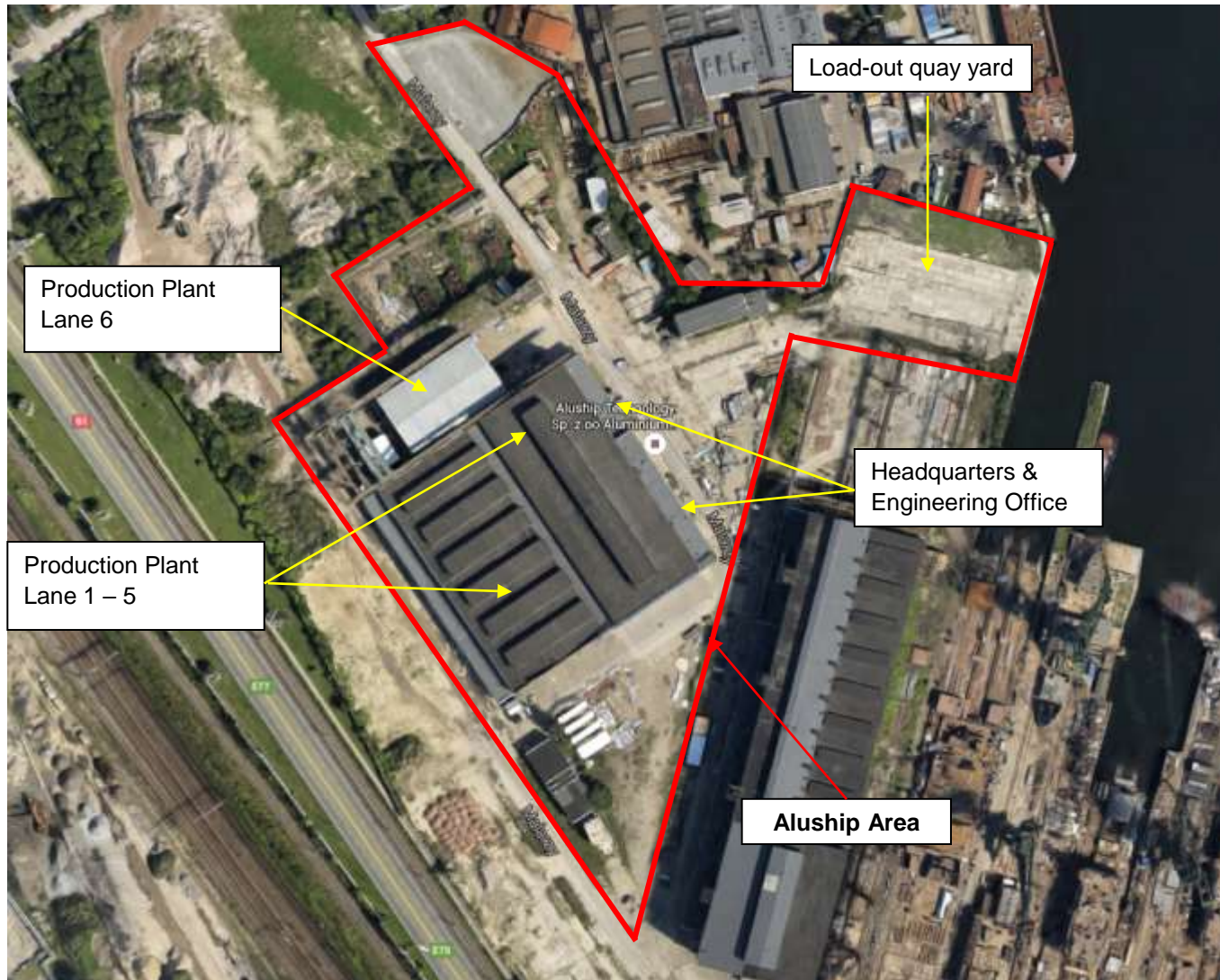
Naval superstructures for TKMS Hellenic Shipyards

Worldwide service for construction and mounting



Grand Bahama Shipyard

Aluship Technology has its own 4.5ha area in Gdansk harbour



Production facilities in Gdansk harbour



Production facilities



12 mtr one-side welding gantries
for aluminium and steel

Our team is permanently trained acc. HSE rules.



Certificates



Lloyd's Register ISO 9001

ISO 45001 ISO 14001



Certified by all major IACS.



EN 1090-1,2,3 ISO 3834-2



and others...

Thank you

Thank you for the time,

We sincerely hope this presentation has helped to find out who we are and what we can do for you.

Please do not hesitate to contact us.

Looking forward to hearing from you

Kind regards

Götz Linzenmeier
Chairman / Founder

Telephones
Fax
Email:
Website:

+48 58 506 68 68
+48 58 506 68 69
contact@aluship.com
www.aluship.com